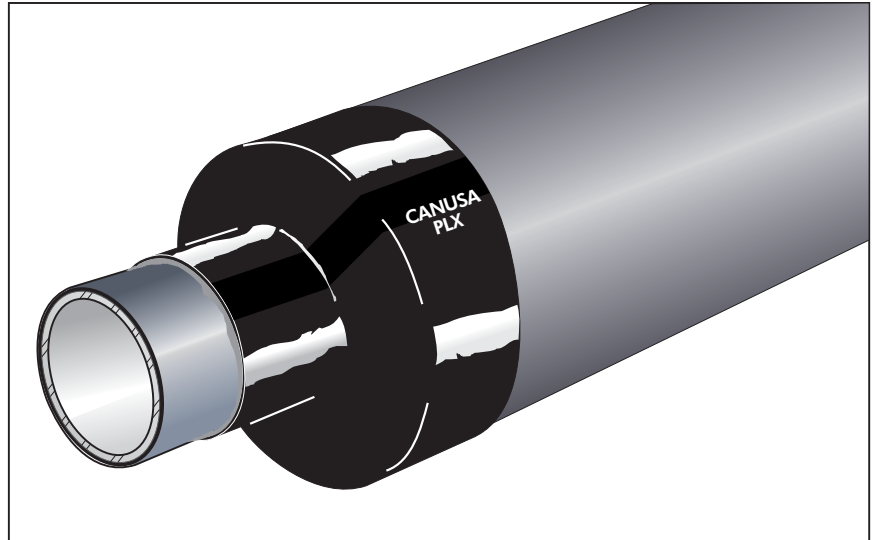


Canusa TubularStops - PLX

High shrink end cap for pre-insulated pipes

Canusa-CPS is a leading manufacturer of specialty pipeline coatings which, for over 30 years, have been used for sealing and corrosion protection of pipeline joints and other substrates. Canusa high performance products are manufactured to the highest quality standards and are available in a number of configurations to accommodate your specific project applications.



Product Description

The Canusa Tubularstop - PLX-65 is a heat-shrinkable, end cap for pre-insulated pipes (example: district heating pipes). The PLX-65 is made from a specially formulated crosslinked polymer and when combined with a high temperature sealant (ECS), it provides a high quality, reliable system for the sealing protection of pre-insulated pipes.

Features & Benefits

Watertight Seal

The Canusa Tubularstop - PLX-65 is designed to provide a watertight seal and prevent water access to the exposed insulation at the weld joint area. Upon application of heat, the PLX-65 shrinks to conform to the profile of the insulated pipe, while the sealant simultaneously "melts" to bond to the jacket pipe and the service pipe. To ensure overall protection of the insulating foam, PLX-65 should be used on both pipe ends.

Insulation Protection

The Canusa Tubularstop - PLX-65 can be factory-installed on the pre-insulated pipe. Once installed, the PLX-65 protects the insulation during transportation and storage. During service, the PLX-65 prevents water ingress into the insulation in the event of leakage at the joint. This can greatly reduce repair costs.

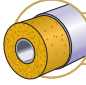




Large Size Range

The Canusa Tubularstop - PLX-65 is available in a full range of sizes to fit most service/jacket pipe combinations. Since the PLX-65 is heat shrinkable, one size can be used to cover several jacket pipe/service pipe combinations.




Easy Installation

The Canusa Tubularstop - PLX-65 is quick and easy to install. Upon application of heat the product quickly conforms to cover the pipe ends. The PLX-65 comes with a separate roll of adhesive which reduces the installation time.

Applications

-  Pre-Insulated Pipes
-  Oil & Gas
-  Water Pipelines
-  End Seal
-  High Temp

Configurations

-  CanusaTube™
-  High Shrink
-  Butyl Sealant

Pipe Sizes

-  PE 110 - PE 1200

Temperature Range

-  up to 120°C (248°F)

Canusa TubularStop - PLX

Product Selection Guide & Sizing: PLX-65

Common Pipe Dimensions PE/Service (mm)	Product Size	Supplied/Recovered mm (in)	Max. Jacket Pipe OD mm (in)	Min. Service Pipe OD mm (in)	Max. Sealant Length Req'd mm (in)	Min. Pieces / Adhesive Roll
125/60	PLX-65 140/55-250 BK	140/55 (5.5/2.1)	125 (4.9)	55 (2.1)	660 (26.0)	22
140/60, 140/76	PLX-65 160/60-250 BK	160/60 (6.3/2.3)	140 (5.5)	60 (2.3)	750 (29.5)	20
160/76, 160/89	PLX-65 175/65-250 BK	175/65 (6.9/2.6)	160 (6.3)	65 (2.6)	860 (33.9)	17
180/76, 180/89	PLX-65 200/70-250 BK	200/70 (7.8/2.7)	180 (7.0)	70 (2.7)	920 (36.2)	16
200/89, 200/114	PLX-65 220/85-250 BK	220/85 (8.6/3.3)	200 (7.8)	85 (3.3)	1060 (41.7)	14
225/114, 225/140	PLX-65 260/100-250 BK	260/100 (10.2/3.9)	225 (8.8)	100 (3.9)	1220 (48.0)	12
250/114, 250/140, 250/168	PLX-65 280/110-250 BK	280/110 (11.0/4.3)	250 (9.8)	110 (4.3)	1390 (54.7)	10
280/140, 280/168, 280/194	PLX-65 310/125-250 BK	310/125 (12.2/4.9)	280 (11.0)	125 (4.9)	1560 (61.4)	9.6
315/168, 315/219	PLX-65 350/140-300 BK	350/140 (13.8/5.5)	315 (12.4)	140 (5.5)	1750 (68.9)	8.6
355/219	PLX-65 400/150-300 BK	400/150 (15.7/5.9)	355 (14.0)	150 (5.9)	1880 (74.0)	8.0
400/219, 400/273	PLX-65 450/160-300 BK	450/160 (17.7/6.3)	400 (15.7)	160 (6.3)	2190 (86.2)	6.8
450/273, 450/324	PLX-65 500/190-300 BK	500/190 (19.7/7.5)	450 (17.7)	190 (7.5)	2510 (98.8)	6.0
500/273, 500/324, 500/356	PLX-65 550/210-450 BK	550/210 (21.6/8.3)	500 (19.7)	210 (8.3)	2770 (109)	5.4
520/356, 520/406	PLX-65 560/220-450 BK	560/220 (22.0/8.6)	520 (20.5)	220 (8.6)	2990 (118)	5.0
560/324, 560/356, 560/406, 560/457	PLX-65 610/230-450 BK	610/230 (24.0/9.0)	560 (22.0)	230 (9.0)	3270 (129)	4.6
630/356, 630/406, 630/457, 630/508	PLX-65 680/245-450 BK	680/245 (26.7/9.6)	630 (24.8)	245 (9.6)	3650 (144)	4.1
670/406, 670/457, 670/508	PLX-65 710/250-450 BK	710/250 (28.0/9.8)	670 (26.3)	250 (9.8)	3780 (149)	4.0
710/406, 710/457, 710/508, 710/558	PLX-65 750/265-450 BK	750/265 (29.5/10.4)	710 (28.0)	265 (10.4)	4070 (160)	3.7
780/559, 780/610	PLX-65 825/290-450 BK	825/290 (32.4/11.4)	780 (30.7)	290 (11.4)	4450 (175)	3.4
800/457, 800/508, 800/559, 800/610	PLX-65 850/300-450 BK	850/300 (33.5/11.8)	800 (31.5)	300 (11.8)	4660 (183)	3.2
900/508, 900/559, 900/610, 900/711	PLX-65 950/335-450 BK	950/335 (37.4/13.1)	900 (35.4)	335 (13.1)	5140 (202)	2.9
1000/610, 1000/711, 1000/813	PLX-65 1050/375-450 BK	1050/375 (41.3/14.7)	1000 (39.3)	375 (14.7)	5770 (227)	2.6
1100/813, 1100/914	PLX-65 1150/405-450 BK	1150/405 (45.2/15.9)	1100 (43.3)	405 (15.9)	6410 (253)	2.3
1200/914, 1200/1016	PLX-65 1250/440-450 BK	1250/440 (49.2/17.3)	1200 (47.2)	440 (17.3)	7040 (277)	2.1

Double wraps of ECS can also be used to increase the sealant width (it will double the max sealant length required and half the pieces/adhesive bulk roll)

Typical Product Properties: PLX-65 and ECS

	Test Standard	Unit	Typical Result		Test Standard	Unit	Typical Result	
PLX-65	Backing Tensile Strength	ASTM D638	MPa (psi)	24 (3480)	ECS	Temperature Range	-23 to 120 (10 to 250)	
	Backing Elongation	ASTM D638	%	700		Lap Shear Strength	ASTM D1002-53T	N/cm ² (psi)
	Backing Hardness	ASTM D2240	Shore D	48		Compression Force	ASTM D395.55	kg, (lbs)
	Dielectric Voltage Breakdown	ASTM D149	kV/mm	27		Elongation	ASTM D638	%
PLX-65	Water Absorption	ASTM D570	%	0.05	ECS	Hardness	penetrometer	--
						Moisture Vapour Resistance	ASTM E96	perms/10 mils

How to Order: PLX-65 and ECS

PLX-65	PLX-65 260/100-250 BK	Ordering Options		ECS	ECS-B 30-1.25-15 BK	Ordering Options	
		PLX-65	ECS				
	Colour ▶	BK - Black			Colour ▶	BK - Black	
	Sleeve Width ▶	250, 300, 450mm (10, 12, 18")			Roll Length ▶	15m (50ft)	
	Supplied/Recovered ▶	260mm/100mm			Adhesive Thickness (as supplied) ▶	1.25mm (0.050")	
	Recovery ▶	65%			Roll Width (as supplied) ▶	30mm (1.25")	
	Shrink Ratio ▶	X = High Shrink			Bulk Roll Designation ▶	B = Bulk Roll Quantity	
	Backing Thickness (as supplied) ▶	L = 0.85mm (0.033")			Configuration ▶	ECS = End Cap Sealant	
	Configuration ▶	P = CanusaTube™					



A SHAWCOR COMPANY

Canada

CANUSA-CPS
a division of SHAWCOR LTD.
25 Bethridge Road
Rexdale, Ontario
M9W 1M7,
Canada
Tel: +1 (416) 743-7111
Fax: +1 (416) 743-5927

U.S.A./Latin America

CANUSA-CPS
a division of SHAWCOR INC.
2408 Timberloch Place
Building C-8
The Woodlands, Texas
77380, U.S.A.
Tel: +1 (281) 367-8866
Fax: +1 (281) 367-4304

Europe/Middle East

CANUSA-CPS
a division of Canusa Systems Ltd.
Unit 3, Sterling Park
Gatwick Road
Crawley, West Sussex
England RH10 9QT
Tel: +44 (1293) 541254
Fax: +44 (1293) 541777

www.canusacps.com

Asia/Pacific

CANUSA-CPS
a division of SHAWCOR LTD.
#05-31, Blk 52, Frontier
Ubi Avenue 3
Singapore
408867
Tel: +65-6749-8918
Fax: +65-6749-8919