

Casing Spacers
System raci 4 pipes





Product information

Raci casing spacer with **ball shaped skids** in a complete **screw-less version** are extremely **fast to mount**.

The high flexibility of the spacers allows extreme bedings of the parts.

The very high number of ball shaped skids allow a perfect share of the pipeline load.

The round skids work with **low friction** and provide a **high abrasion resistance**.

Keeping a **stock** of raci spacers is **easy and highly economical** because of very few different spacers to be kept.

The **unique non-metallic connection** makes the system perfectly suitable for cathodic protected steel pipelines.

Heavy duty spacers can be produced with **full material skids** on request. Also **high temperature material** is available on special demand.

A high quality and **highly shear resistant anti slide**, PE-reinforced butyle tape avoids slipping of the spacer rings on the pipe surface. A save function is allowed even at high forces.

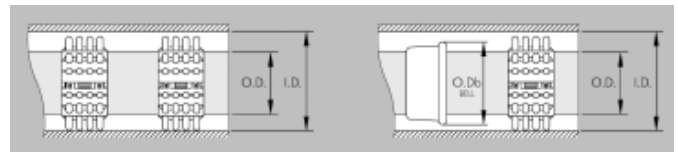
Our material is 100% PE and 100% recyclable.

Raci spacer elements are easily pushed into each other and fastened with a standard plumbers clamp or a special tightening tool for the more heavy types. No time consuming screwing from element to element has to happen on site.

The tooth connection system allows a quick and save mounting on the carrier pipe.

Only seven basic types of spacers allow a complete coverage for all pipes from 38 to 2500 mm.

The complete metal free system provides highest mechanical load capacity.



The right Type of spacer depends on pipe sizes and the expected forces. A save distance between the rings and the necessary number of elements per ring **can be chosen** in the following tables.



A/B Type spacers

Max load capacity

180 kg/ring

Available skid heights:

19, 36 and 50 mm

Length of elements usable:

Type A = 105-122 mm

Type B = 87-103 mm

Width 100 mm

No special tool necessary!

OD pipe in mm		No. of elements per ring		distance recommended
min.	max.	A	B	
55,4	65,6	-	2	1,5 m
61,3	71,5	1	1	1,5 m
67,3	77,4	2	-	1,5 m
82,9	94,4	-	3	1,5 m
89,1	104,3	1	2	1,5 m
101,1	116	3	-	1,5 m
110,8	131,2	-	4	1,5 m
116,6	137,1	1	3	1,5 m
134,7	154,8	4	-	1,5 m
150,3	175,8	2	3	1,5 m
168,5	193,5	5	-	1,5 m
193,5	229,6*	-	7	1,0 m
202,2	232,2*	6	-	1,0 m
230	265*	6	1	1,0 m
269	309,6*	8	-	1,0 m

*F/G spacers are recommended for these sizes



S/T Type spacers

Max load capacity 110 kg/ring
Available skid height 19 mm
Length of elements usable:
Type S = 92-109 mm
Type T = 117-132 mm
Width 85 mm

No special tool necessary!

OD pipe in mm		No. of elements per ring		distance recommended
min.	max.	S	T	
38	43	–	1	1,5 m
59	68	2	–	1,5 m
69	75	1	1	1,5 m
76	84	–	2	1,5 m
88	102	3	–	1,5 m
103	107	2	1	1,5 m
108	114	1	2	1,5 m
115	120	–	3	1,5 m
121	132	4	–	1,5 m
133	140	3	1	1,5 m
141	146	2	2	1,5 m
147	152	1	3	1,5 m
153	168	–	4	1,5 m



F/G Type spacers

Max load capacity 500 kg/ring
Available skid heights:
25, 41 and 60 mm
Length of elements usable:
Type F = 198-228 mm
Type G = 95-121 mm
Width 130 mm

Tightening clamp Type F/G, M/N, L

OD pipe in mm		No. of elements per ring		distance recommended
min.	max.	F	G	
116*	145*	2	–	2 m
124*	150*	1	2	2 m
154	182	2	1	2 m
189	217	3	–	2 m
219	256	3	1	1,5 m
254	282	4	–	1,5 m
283	315	4	1	1,5 m
316	345	5	–	1,5 m

*A/B spacers are recommended for these pipe sizes



ICD Type spacers

Max load capacity 200 kg/ring
Available skid height 15 mm
Length of elements usable:
Type I = 130-160 mm
Type C = 180-250 mm
Type D = 240-310 mm
Width 63 mm

No special tool necessary!

OD pipe in mm		No. of elements per ring			distance recommended
min.	max.	I	C	D	
42	52	1	–	–	1 m
58	79	–	1	–	1 m
80	93	–	–	1	1 m
94	100	2	–	–	1 m
101	120	1	1	–	1 m
121	145	–	2	–	1 m
146	165	–	1	1	1 m
166	197	–	–	2	1 m



M/N Type spacers

Max load capacity 1.000 kg/ring
Available skid heights:
18, 36, 50, 75 und 90 mm
Length of elements usable:
Type M = 265-320 mm
Type N = 185-240 mm
Width 180 mm

Tightening clamp Type F/G, M/N, L

OD pipe in mm		No. of elements per ring		distance recommended
min.	max.	M	N	
160*	201	2	–	2 m
202	227	1	2	2 m
228	252	2	1	2 m
253	286	3	–	2 m
287	311	2	2	2 m
312	337	3	1	2 m
338	395	4	–	2 m
396	421	4	1	2 m
422	505	5	–	2 m
506	590	6	–	1,5 m
591	674	7	–	1,5 m
675	759	8	–	1,5 m

*F/G spacers are recommended for these pipe sizes



E/H Type spacers
 Max load capacity
 2.700 kg/ring
 Available skid heights 25, 41, 60, 90, 110 and 130 mm
 Length of elements usable:
 Type E = 280-320 mm
 Type H = 130-170 mm
 Width 225 mm

Tightening clamp Type E/H



L Type spacers
 Available skid heights:
 25, 50, 75, 100, 125, 150, 175 and 200 mm
 Length of element usable:
 Type L = 280-325 mm
 Width 210 mm

Tightening clamp Type F/G M/N, L

OD pipe in mm		No. of elements per ring		Ringabstand empfohlen
min.	max.	E	H	
221*	266	2	1	2 m
267*	305	3	-	2 m
306*	354	3	1	2 m
355	397	4	-	2 m
398	457	4	1	2 m
458	489	5	-	2 m
490	549	5	1	2 m
550	580	6	-	2 m
581	641	6	1	2 m
642	732	7	-	2 m
733	800	8	-	1,8 m
801	900	9	-	1,8 m
901	1000	10	-	1,8 m
1001	1099	11	-	1,8 m
1100	1191	12	-	1,8 m
1192	1283	13	-	1,5 m
1284	1374	14	-	1,5 m
1375	1466	15	-	1,2 m
1467	1558	16	-	1,2 m
1559	1650	17	-	1,2 m
1651	1741	18	-	1 m
1742	1833	19	-	1 m
1834	1925	20	-	0,8 m
1926	2108	21	-	0,7 m
2109	2200	23	-	0,7 m
2201	2292	24	-	0,7 m

OD pipe in mm		No. of elements per ring	Ringabstand empfohlen	
min.	max.		Wasser	Gas
450	510	5	2,5 m	2,5 m
540	610	6	2,5 m	2,5 m
625	715	7	2,5 m	2,5 m
715	805	8	2,5 m	2,5 m
805	895	9	2 m	2,5 m
895	985	10	2 m	2,5 m
985	1075	11	1,5 m	2,5 m
1075	1160	12	1 m	2 m
1160	1250	13	1 m	2 m
1250	1340	14	1 m	2 m
1340	1430	15	0,8 m	2 m
1430	1520	16	0,8 m	2 m
1520	1610	17	0,5 m	2 m
1610	1750	18	0,5 m	2 m

Load capacity type L:

25, 50 mm static load capacity max. 3000 Kg
 75, 100 mm static load capacity max. 2500 Kg
 125, 150 mm static load capacity max. 2000 Kg
 175, 200 mm static load capacity max. 1500 Kg



Attention: For spacers with skids above 120 mm, the max. load capacity reduces to 50% of the given value.

Never forget anti sliding tape



You need to bring several pipes through one casing!
 We calculate the bundle for you or find a customized Steel solution.

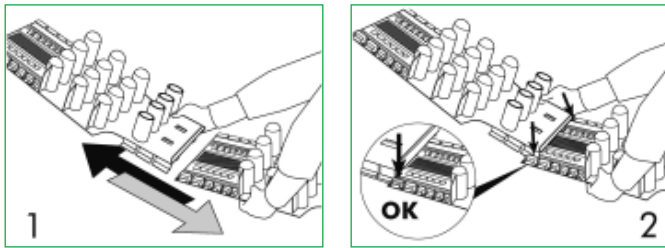
Casing Spacers System raci 4 pipes



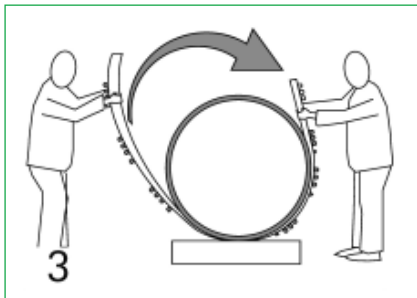
Application manual:

Before mounting please choose the right spacer and the right number of elements per ring for your application. A double ring of spacers is mounted at the end and the beginning of the crossing.

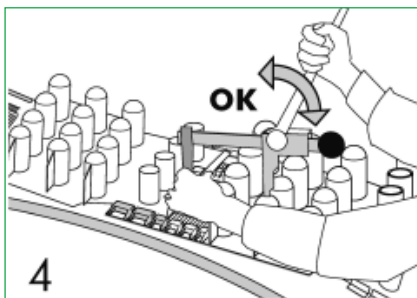
For preparation prefix the right number of elements per ring by inserting two or three teeth. **DO NOT CLOSE THE RING.** Decide the spacers position on the carrier pipe. Apply anti slide tape under each ring to avoid movement of the rings on the pipe surface.



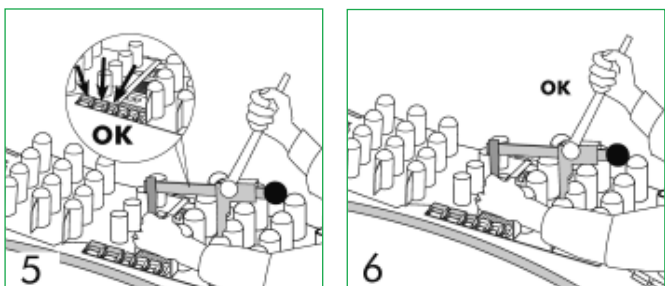
To mount on the pipe, connect ends of the ring by inserting two or three teeth deep.



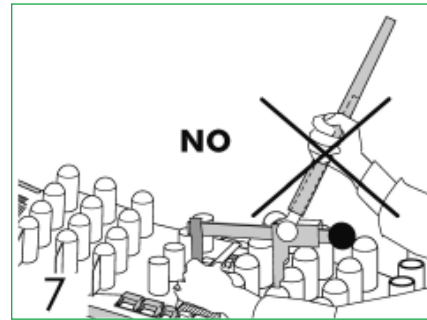
Tighten all element connections evenly until the ring is fixed on the pipe properly. Do not fasten the elements unequal.



The minimum overlap of the connection zones is 50%, better 2/3. If the spacers are applied one or more days before insertion, the rings **MUST** be tightened again.



Never use an extended lever.



The guarantee for the spacers 4pipes is limited to the replacement of faulty material.

The usability of the product for the individual application is under the users responsibility.

NO Special clamp for type A/B, S/T and I/C/D



Watch application video.