

UltraSeal™

Advanced heat shrinkable sleeve system for long term protection of insulated pipe joints

For more than 35 years, Canusa-CPS has been a leading developer and manufacturer of specialty pipeline coatings for the sealing and corrosion protection of pipeline joints and other substrates. Canusa-CPS high performance products are manufactured to the highest quality standards and are available in a number of configurations to accommodate many specific project applications.

Product Description

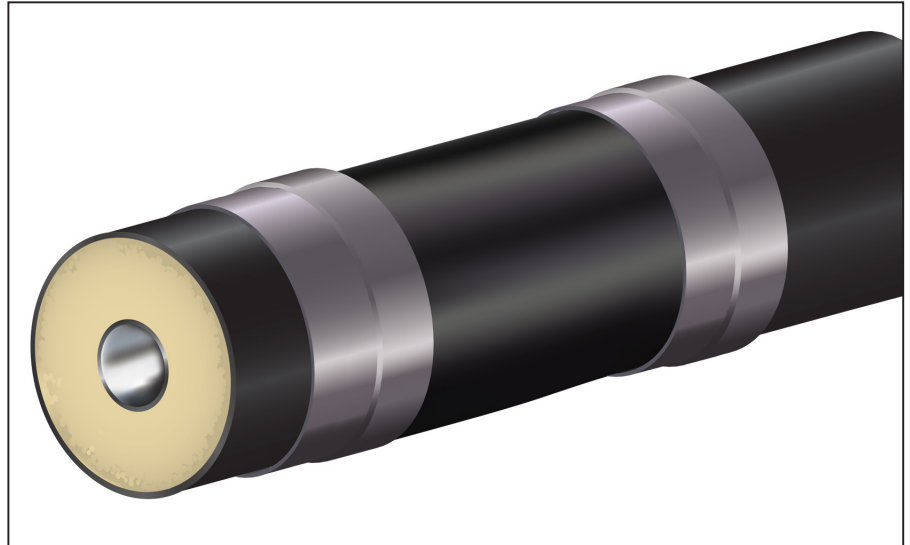
The Canusa UltraSeal™ system represents the latest and most advanced in heat shrinkable sleeve technology for long term sealing and protection of insulated pipeline joints. The system is specifically designed to offer maximum protection and sealing of insulated pipe joints, providing a barrier to moisture absorption, while offering extreme protection from the soil stresses associated with insulated pipelines.

Features & Benefits

Proven Watertight Technology

UltraSeal™ is the result of the evolution of Canusa-CPS' sealing technology. Canusa has a proven track record in providing sealing for the joints on pre-insulated pipelines over multiple decades in the District Heating and Oil industry. UltraSeal™ builds upon this technological base to provide the most advanced moisture barrier available in a heat shrinkable sleeve system.

UltraSeal's™ adhesive covers the entire width of the outer crosslinked polyethylene layer, providing a fully integrated and bonded system that will maintain tightness over the life of the pipeline. Not only does this provide the best seal, it offers maximum resistance to the other stresses associated with pre-insulated pipelines, such as thermal expansion and contraction, cooling and heating cycles and soil stresses.



Advanced Resistance to Soil Stresses

UltraSeal's™ crosslinked, high density polyethylene outer layer offers excellent rigidity and resistance to abrasion, while the adhesive layer has been developed to offer maximum shear strength, while maintaining the same resistance to moisture ingress that has made Canusa's sealing products so successful. The system is fully certified to the rigorous EN 489:2009 specification.

Simplified and Robust Installation Procedure

This revolutionary new technology provides best in class performance characteristics while offering the lowest installation temperature of any comparable system. The very forgiving installation procedure offers additional assurance that each and every joint will be protected in the same way.

Applications



Pre-Insulated Pipes



Foam-In-Place



Pre-Foamed Joints

Configurations



Wrapid Sleeve™



CanusaWrap™



Standard Shrink

Pipe Sizes



63-1200mm

Approvals



EN 489:2009

Typical Product Properties

	Test Standard	Unit	Typical Value	
Adhesive	Softening Point	ASTM E28	°C	100
	Lap Shear Strength @23°C	EN 12068	N/cm ²	135
	Lap Shear Strength @45°C	EN 12068	N/cm ²	100
Backing	Specific Gravity	ASTM D792		0.94
	Tensile Strength	ASTM D638	MPa	24
	Elongation	ASTM D638	%	600
	Hardness	ASTM D2240	Shore D	55
	Thermal Aging	ASTM D3045	150°C	21 days
	Followed by Elongation	ASTM D638	23°C	>450%
Sleeve	Peel Strength @ 23°C	EN 12068 (10 mm/min)	N/cm	90
	Soil Stress Resistance	EN 489:2009	100 cycles	pass
	Followed by External Pressure Test			

How To Order:

Dimensions & Ordering Info	UltraSeal 180-150/ L 	UltraSeal Pre-Cut Sleeve with Pre-Attached Closure
		Backing: 0.90 mm / Adhesive: 1.3 mm
		150, 225, 300, 450, 600, 760, 900 mm
	UltraSeal-B 150-30/ L 	Bulk Roll (Closure Purchased Separately)
		Backing: 0.90 mm / Adhesive: 1.3 mm
		150, 225, 300, 450, 600, 760, 900 mm
		UltraSeal™
		UltraSeal™ (Bulk Roll)

CLH 100-YYY BK	CLH-B 100-XX BK	<p>For Bulk Rolls, separate closures are required. They are available in rolls, or pre-cut to the sleeve width.</p>
YYY: All UltraSeal™ Widths	XX: 15, 30 m (50, 100 ft)	
100 mm (4" wide)		
Cut to Length	B - Bulk Roll	
Adhesive Thickness - 0.35 mm		
Backing Thickness - 0.6 mm		



A SHAWCOR COMPANY

www.canusacps.com

Canada

CANUSA-CPS
a division of SHAWCOR LTD.
25 Bethridge Road
Toronto, Ontario
M9W 1M7,
Canada
Tel: +1 (416) 743-7111
Fax: +1 (416) 743-5927

U.S.A./Latin America

CANUSA-CPS
a division of SHAWCOR INC.
2408 Timberloch Place
Building C-8
The Woodlands, Texas
77380, U.S.A.
Tel: +1 (281) 367-8866
Fax: +1 (281) 367-4304

Europe/Middle East

CANUSA-CPS
a division of CANUSA SYSTEMS LTD.
Unit 3, Sterling Park
Gatwick Road
Crawley, West Sussex
England RH10 9QT
Tel: +44 (1293) 541254
Fax: +44 (1293) 541777

Asia/Pacific

CANUSA-CPS
a division of SHAWCOR LTD.
#05-31, Blk 52, Frontier
Ubi Avenue 3
Singapore
408867
Tel: +65-6749-8918
Fax: +65-6749-8919

Canusa warrants that the product conforms to its chemical and physical description and is appropriate for the use stated on the installation guide when used in compliance with Canusa's written instructions. Since many installation factors are beyond our control, the user shall determine the suitability of the products for the intended use and assume all risks and liabilities in connection therewith. Canusa's liability is stated in the standard terms and conditions of sale. Canusa makes no other warranty either expressed or implied. All information contained in this installation guide is to be used as a guide and is subject to change without notice. This installation guide supersedes all previous installation guides on this product. E&OE