

FISHING LINES 2012

climax



As a German manufacturer of braided and monofilament fishing lines we draw on over 60 years of experience in the development and production of fishing lines and fibres. Since the introduction of modern technology fishing lines, made of synthetic fibres since the late 1940s, we have invested our passion, creativity and knowledge into every new product. We were not only one of the first companies in Europe to make monofilament fishing lines, but in the early 1990s as the first supplier of braided fishing lines we laid the foundation for the overwhelming triumph of this new fishing line technology.

Today, anglers expect a lot more from their fishing lines. The differences between products are often minimal, but for a specialist fishing technique they can be a great advantage. On the following pages we would like to show you our product range, shed some light on the fishing line 'jungle', and help you with CLIMAX lines to get a little closer to your dream fish.

- S.2-10: Braided lines
- S.4-5: „TOUCH“ 8-Braid
- S.6-7: „miG“
- S.8: „BR8“
- S.9: „Superbraid“
- S.10: „Concept Pro“

- S.11-15: Monofilament lines
- S.12: „Select“
- S.13: „Concept Pro“
- S.14: „Soft & Strong“
- S.15: „Special“
- S.16-17: Speci-Fish lines
- S.18-19: „Haruna“ Sea range
- S.20-21: „CULT – CATFISH“ range
- S.22-23: Predatory fish range
- S.24-28: “CULT CARP” range
- S.29-31: “CLIMAX Tools”

„BRAIDED LINES“

A fishing line is braided from at least three, and up to eight or 16 fibres. Only synthetic fibres are used, and depending on the required properties, are combined with each other – even with wire. Essentially, three factors influence the characteristics of a braided fishing line: the base fibre, the braiding, and the finishing/surface treatment. These determine the fishing environment, strength and suppleness of the line as well as the durability, abrasion resistance and of course the price.

Abrasion Resistance

An unsealed Dyneema® braided line is strong, but quickly opens up its weaves with wear. All of our braided lines are sealed and therefore are much more resistant to abrasion. In addition, a method has been developed which increases the abrasion resistance of the best sealed lines approximately five-fold. The lines treated in this way have been setting the standard throughout the market place for many years for catfish or carp rigs.

Stretch or Elasticity

Most braided lines have very low stretch of between 1% and 8% allowing unique and direct control and contact to your bait. Just for predator fishing with modern methods, such as drop shot fishing, a well braided line is without doubt the best line to use. An important issue to consider however is that a low-stretch-line means a much higher load on the unit, because each strike goes directly through the rod and reel. It means that with braided lines it is



particularly important to correctly set the reel brake. Our tip: Because of its low stretch, a braided fishing line is not always the appropriate choice for every angling method. Every ordinary fishing reel now has a spare spool, so we recommend filling one spool with a braid and the other one with a monofilament, so that you are perfectly prepared for every situation.

Diameter

A precise determination of the diameter of a braided line is almost impossible. This is because, despite its precise weave and special stretching, it deforms during measuring with a micrometer, while measurement of the often 'non-round' body using a laser is inaccurate. It is therefore common to show arithmetical approximations on the label for the diameter. For this reason we recommend you buy your braided line according to the breaking strain and do not be fooled by non-verifiable diameter information.

Dyneema® Fibres

We use 100% Dyneema® fibres as the basic fibres in all major fishing lines. Weight for weight, this high-strength polyethylene fibre from the Dutch chemicals group DSM has 15 times more tensile strength than steel. With a density of 0.95 to 0.97 g/cm³ it is lighter than water and always buoyant.

Colour

In the manufacture of a monofilament fishing line, colour pigments are usually added to the plastic granules – these lines are coloured throughout, and therefore have almost no colour run. It is different for braided lines. The Dyneema® fibre itself is pure white and very chemically resistant. The surface of this fibre does not absorb any colour. The colouring process is thus accomplished by 'attaching'



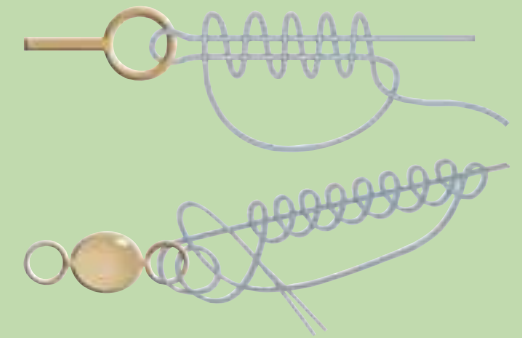
the pigments to the surface of the line, and over time this can fade out. Each fisherman has had his own experiences with fishing line colours. There are species of fish, like salmon, which are more sensitive and other species, such as most cyprinids, which are less responsive to colour. Climax braids are always available in both bright colours and camouflage, so that you are properly prepared for every kind of angling.

Braiding

Basically, we distinguish between two types of weave – round or symmetrical, and oval or asymmetrical. Also, the closeness of the weave, ie. the number of knots per cm, plays an important role. Climax fishing lines are braided in an extremely stable and precise manner to make them highly reliable. The quality of the weave also affects the price, because a close weave requires a slower machine braiding speed. Currently the new 8-braided TOUCH sets the benchmark for braids – it is perfectly smooth, round and feels very supple.

Knots & knot strength

What use is the best line when the knot rises or even tears? Climax braids are specially treated so that each knot has a strength of 70% to 90%. Especially strong stretched, fused and heat sealed lines often have a much smaller knot strength. Here are a few knots for braided lines that we can recommend:



Care

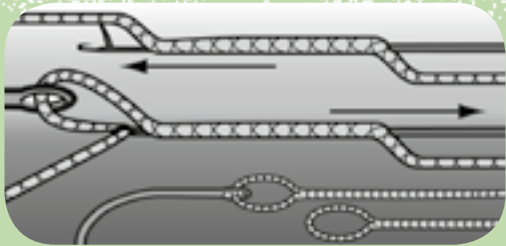
After prolonged use and especially when fishing in salt water, it is advisable to rinse the line with tap water. After drying, you can treat your braid with a fishing line care product. For this we offer CLIMAX Soft and Protector for cleaning & protecting. This cleans even the smallest dirt particles and covers your line with an effective protective, non-greasy film. Note: Check regularly the first 20 metres of your line. If there are signs of a roughened surface and torn individual threads, cut off the damaged piece and replace your rig.



monofilament. On the other hand, the knot strength of a braid lies partially below 70% of the linear stability, while a monofilament value can reach up to 99% in the knot.

Splicing

Thanks to the technique of splicing, especially hollow braids (eg lead core) can be provided with knotless and flexible loops. The loose end of line is placed here for looping and pulled into the interior of the line. On the production line, the braid pulls itself together and clutches itself so tightly that the loop can no longer open. See figure.



Breaking strain

The breaking strain specified on the label should help the angler to compare different lines with regard to the line diameter and select the right product for himself. To this end, fishing lines of all manufacturers are always tested for their breaking strain under the same laboratory conditions. Unfortunately, not all manufacturers adhere to these practices and mislead the buyer with some extremely 'embellished' breaking strain information. The linear breaking strain of a line measures the tensile strength without knots. Braided Dyneema® lines have a significantly higher linear breaking strain than

Sealing

After precise braiding, the surface treatment is above all the most important factor in producing a well braided fishing line. The refining process is probably the best kept secret of each braiding factory. Without giving details, we differ in the production of three major refining processes: stretching, thermo-fixation and sealing. Together, these procedures provide for the excellent casting characteristics, knot strength and abrasion resistance of Climax lines.



The brand new TOUCH 8-Braid:
By the first touch this phenomenal
8-fibre braid will fascinate you
and not let you go!

This is what makes this line so
much better than other braids:

- Straight 8-fibre braid in ultimate
perfection and roundness
- Most supple surface ever
enables incredible casting
- Noiseless and frictionless –
the new Hi-Tech finish makes your
TOUCH fly through the guides
- Lowest possible stretch
- Direct contact

Touch

BRAID



TOUCH 8-BRAID

Ø	0,12	0,14	0,16	0,18	0,20
kg	9,20	11,3	14,2	16,6	19,0
Ø	0,22	0,25	0,28	0,30	
kg	21,5	24,0	26,8	29,5	

STATE-OF-THE-ART FISHING BRAID –
EXCELLENCE FOR YOUR SUCCESS!



MIG EXTREME BRAID

PEAK PERFORMANCE MADE IN GERMANY
MEANT FOR FISHING MANIACS!

miG
EXTREME BRAID

- Pure Dyneema® fibres & micro braiding for extremely high breaking strain and knot strength
- Thermofixation for improved castability, durability and a super supple surface
- Polysiloxane sealing for max. abrasion resistance and protection from dirt-infiltration, salt and UV-rays



CLIMAX miG

Ø	0,10	0,12	0,14	0,16	0,18
kg	6,8	9,1	11,2	12,7	14,8
Ø	0,20	0,25	0,28	0,30	0,35
kg	16,0	17,5	25,0	31,0	35,0
Ø	0,40	0,50			
kg	39,0	60,0			



miG
EXTREME BRAID

ø 0,30 - 66,0lb - 100m
Art. No. 936210100030
www.climax-fishingline.de



NEW GENERATION BRAID.

The high-tech braided line Climax Mono-Braid BR8 combines the advantages of a braid with those of monofilament:

- High breaking strain combined with small diameter
- Low elasticity → direct contact to bait and fish
- Smooth round surface → results in long, accurate casts
- High knot strength

Available in camouflage colour as well as signal coloured high-vis.



BR8 MONO-BRAID

Ø	0,10	0,12	0,15	0,18	0,22
kg	6,0	7,5	10,5	12,0	16,0
Ø	0,25	0,30	0,35	0,40	0,45
kg	22,0	32,0	36,0	39,0	46,0
Ø	0,50				
kg	56,0				

All these lines feature ultra-strong DYNEEMA®-Fibres for maximum breaking strain and perfect suppleness. Each one varies in the applied braiding technique and quantity of woven fibres according to their specific purpose. The Thermo fixation makes them resistant against abrasion and dirt infiltration. Finally these braids are best when fishing on longer distances or direct contact to your bait and prey is wanted.

CLIMAX SUPERBRAID SINKING

Like the FLOATING design, this line is optimized for fishing in fresh and salt water.

Through incorporation of heavy polyester fibers, the line is heavier than water and sinks into the water surface. This is not only an advantage when fishing in strong wind, but also when fishing at great depths. Abrasion and water resistance is increased through an additional sealing.

Attributes:

- Sinking
- Strand sealing for high abrasion resistance and farther casting
- UV-resistant
- Suitable for fresh and salt water

Color: olive



CLIMAX SUPERBRAID SINKING

Ø	0,10	0,12	0,14	0,16	0,18
kg	2,7	4,3	5,4	6,2	6,9

Ø	0,20	0,22	0,24	0,26	0,28
kg	10,0	11,2	12,3	13,0	14,0

Ø	0,30
kg	15,2

CLIMAX SUPERBRAID MULTICOLOR

Ø	0,12	0,14	0,16	0,18	0,20
kg	7,5	9,0	11,0	13,0	15,0

Ø	0,25	0,30	0,35
kg	19,0	25,0	31,0

CLIMAX SUPERBRAID

Ø	0,04	0,06	0,08	0,10	0,12
kg	3,1	4,0	5,0	6,5	7,5

Ø	0,14	0,16	0,18	0,20	0,22
kg	9,0	11,0	13,0	15,0	17,0

Ø	0,25	0,28	0,30	0,35	0,40
kg	19,0	22,0	25,0	31,0	36,0

Ø	0,50	0,60	0,80
kg	45,0	54,0	83,0

CLIMAX SUPERBRAID MULTICOLOR

This tight and round braid out of 100% DYNEEMA®-Fibres is 5-color contrasted for simple vision and depth control. The color markings are helpful for exact depth determination with pilk or jig fishing and improve your catch quota.

Like on all SUPERBRAID lines, an additional strand sealing protects the line against external influences and premature aging.

Attributes:

- Tight, round, high-tech braiding
- Strand sealing for high abrasion resistance and farther casting
- UV-resistant
- 5-color camouflage effect

Color: multicolor

CLIMAX SUPERBRAID

This line fulfills the wishes of many anglers for an affordable braid made from DYNEEMA®-Fibres with high breaking strain and suitable for fresh and salt water. The compact braiding and high-tech strand sealing protects the line form dirt and salt crystal infiltration.

Attributes:

- Floating
- Strand sealing for high abrasion resistance and higher casting speed
- UV-resistant

- Suitable for fresh and salt water

Color: olive green, yellow, grey



CONCEPT PRO LINES BRAID

These lines are all manufactured out of DYNEEMA®-Fibres. Braiding tightness and their number of strands vary according to their individual application, for which they were designed. They feature outstanding breaking strain and elegant suppleness. Additional thermo-sealings protect them from dirt and abrasion. They are the perfect lines for fishing at medium to wide distances and ensure direct bait and fish contact.

CLIMAX SINKING SPECIMEN-LINE

High-quality all-round line for bottom fishing, hunting big fish

Added polyester fibres weigh down the light DYNEEMA®-Fibres braid of the SPECIMEN-LINE and allow it to sink quickly through the water surface. The extensive coating increases abrasion resistance and prevents the line from absorbing water, dirt and other unwanted particles.

Attributes:

- quick sinking
- Color: camou-green



CLIMAX CLEAR BRAID

This semi-transparent DYNEEMA®-Fibres braid is virtually invisible to fish due to its clear fibres and a unique process of perfectly pre-stretching it. A specially formulated sealing jackets the braid and prevents it from dirt and water infiltration.

Attributes:

- Virtually invisible to fish
- Zero elasticity
- Sealed surface

Color: semi-transparent



CLIMAX SPECIMEN-LINE

Ø	0,14	0,16	0,18	0,20	0,22
kg	5,4	6,2	6,9	9,5	11,2
Ø	0,25	0,28			
kg	12,5	14,0			

CLIMAX CLEAR BRAID

Ø	0,08	0,10	0,12	0,15	0,17
kg	5,6	6,4	7,3	8,9	10,4
Ø	0,20				
kg	15,0				

CLIMAX MATCH / STIPP-LINE

Ø	0,06	0,07	0,08	0,10	0,12
kg	8,7	8,8	9,2	11,2	12,7
Ø	0,14	0,18	0,22		
kg	15,5	19,0	28,0		

CLIMAX MATCH / STIPP-LINE

For pole- and match fishing or as highquality leader material
This line, made out of high-quality micro-DYNEEMA®-Fibres, has outstanding breaking strain, even with the thinnest diameters. Thermo fixation and the perfect sealing guarantee low elasticity and high abrasion resistance.

You'll feel every smallest tug!

Color: grey



High-Tech made of carbon, hydrogen & air

Monofilament fishing lines are made from polyamide (nylon) pellets, which are liquefied in an extruder and subsequently pressed through fine holes in a spinning nozzle under high pressure. After cooling in a water bath, these threads are expanded by a multiple of their initial length until they are stretched to their final diameter. Depending upon line quality, the threads are put through various immersion baths to receive special coatings for more surface hardness, UV-protection etc. Thanks to the ability to add additives like colour pigments and plasticizers, co-polymers can be manufactured in different colours and with different attributes. The advantages of these lines are obvious: they have a controlled stretch, the line surface is very smooth and there are many colour variations ranging from transparent to opaque black. The price of a monofilament fishing line is significantly less than for a braided line. The diameter is more accurately calibrated, and the knot strength in relation to breaking strain is very good.



Abrasion resistance

If you take into account the load on a line due to friction in the rings, obstacles or fish teeth, the importance of this property is readily apparent. By special processing and coating, it is possible for us to increase the abrasion resistance by up to 12-fold and thus produce bespoke lines for specific requirements.

One special form is Climax HardMono and Fluorocarbon: In both cases we use a fundamentally harder and denser raw material and thereby achieve – in addition to other specific properties of these products – a much higher abrasion resistance than with conventional polyamide monofilament.

Stretching: The stretching of a line plays an essential

role in many fishing situations. Basically, a monofilament line has a stretch of between 15% and 35%, whereby the lesser stretch is typical particularly for fluorocarbon lines and the rather longer stretch of smooth co-polymers, which are used in particular for carp lines. More stretch has the effect of being springy during the play, protects the knots and prevents the hook from sliding off. In addition, an elastic line protects your fishing tackle, since the strike and play do not impact so directly on rod and reel. Too much stretch however also makes accurate ground baiting more difficult, gives you less control during the play and can considerably weaken a powerful strike.



Label

Eye up your purchase. Do not believe everything that a new wonder line promises and instead check out the critical diameter and breaking strain information. Unfortunately they are still very much exaggerated, often far beyond the technically feasible limits. For years CLIMAX has been working actively with other manufacturers on a European solution to this false labeling and is amongst some of the first signatories of the EFTTA Line Charter which is addressing this problem.

Tip: 3.5kg to 4kg breaking load with 0.20 mm diameter is regarded as a reliable reference for a very, very good monofilament line. Significantly higher data suggest mis-labelling. If you want to find out more, visit the EFTTA website (www.eftta.com) on which regularly conducted laboratory tests results and 'black sheep' are published.



Colour

A monofilament fishing line is usually dyed. This means that colour pigment is pre-mixed in with the plastic granulate and these lines are almost non-fade. It is different for braided lines (see p. 2). The colours of our monofilament lines are individually tailored and optimised to target certain types of angling and in certain cases, specific fish.

Fluorocarbon

All Climax fluorocarbon lines are 100% fluorocarbon. Unlike conventional nylon monofilaments, fluorocarbon is very heavy, so these lines sink quickly. In addition, fluorocarbon does not absorb water, which means the breaking strain and elasticity are not altered, even after long use in the water. The material is extremely resistant to abrasion and its refraction index is extremely close to that of water, whereby the line itself is very difficult to see for fish with good vision. For these reasons fluorocarbon is a popular choice for predatory fish.

Knots & knot strength

What use is the best fishing line when the knot rises or even tears? Depending on the raw material, the processing, and of course depending on the knots, a monofilament has a knot strength of 75% to 99%. The harder fluorocarbon reaches a knot strength of 60% to 80%. Generally speaking, the greater the stretch and flexibility of the line, the greater the knot strength..

Our tip: The hard fluorocarbon can literally squeeze and finally cut the much softer Co-polymer. Therefore, we recommend the use of a swivel when connecting these different materials with each other.

Memory

This refers to the 'memory' of monofilament lines at the time of being on a spool. If the line curls strongly during unwinding, then it has a lot of 'memory'. The longer the line is on a spool, the more it will curl – dryness and high temperatures enhance this effect. Due to a special

treatment directly after extrusion, we at Climax reduce this effect as much as possible. However the memory cannot be completely eliminated since other properties of the line greatly suffer. Soft stretch lines with more stretch generally have less memory.

Breaking strain

The breaking strain specified on the label should help the angler to compare different lines with regard to the line diameter, and select the right product for himself. To this end, fishing lines of all manufacturers are always tested for their breaking strain under the same laboratory conditions. Unfortunately, not all manufacturers adhere to these practices and they mislead the buyer with some extremely 'embellished' breaking strain information. The linear breaking strain of a line measures the tensile strength without knots.

The European Federation of the Fishing Industry gives a kind of ISO certificate for the authenticity of the technical details for fishing lines. Such a certificate is available on many of our monofilament labels.



SELECT LINES – MONOFILAMENT

These top lines are the best of the best and were developed for the angler who places the highest production quality and merciless reliability above all else and would not mind paying a bit more for this.

CLIMAX SELECT SPIN

This line's focus was to improve castability and direct bait control. Thanks to precise stretching and a high-quality, sealing the line features a super smooth surface, very low memory without being hard and finally casts further than other products. Its low elasticity offers direct bait contact. Suitable for fresh and salt water.
Color: light green



CLIMAX SELECT MATCH

The molecular sealing of the high-quality nylon and multiple stretching give this line an impressive breaking strain and knot strength, even with the thinnest diameters. The fluorine surface treatment prevents additional water absorption. The breaking strain remains even after hours of fishing. Elasticity is coordinated to use in match fishing.
Color: water-green



CLIMAX SELECT FLUOROCARBON

SELECT FLUOROCARBON has mastered a weakness that plagues most other fluorocarbon lines on the market: it has particularly high knot strength of about 80% and a suppleness that results in perfect casts and bait presentation. This is a very special line. Whether you are fishing in crystal clear water or stalking the most timid of fish, SELECT is the right choice. It has a similar rate of refraction to water so is practically invisible to fish, which dramatically increases your chances of success.
Color: transparent



CLIMAX SELECT HIGH TEC

This exceptional line is the best choice for the highest handling demands and maximum security in fresh and salt water and for all kinds of fish. The high-quality nylon is molecular sealed and stretched multiple times, so that breaking strain, knot strength, memory elasticity and abrasion resistance are united in the best possible combination and will not be outdone by any other monofilament.
Color: turquoise blue



CLIMAX SELECT SPIN

Ø	0,08	0,10	0,12	0,14	0,16
kg	0,6	1,0	1,5	2,0	2,6
Ø	0,18	0,20	0,23	0,26	0,28
kg	3,2	4,0	4,6	6,0	7,0
Ø	0,31	0,34	0,37	0,40	0,43
kg	8,3	9,5	11,5	13,0	16,0
Ø	0,47	0,52			
kg	19,0	22,0			

CLIMAX SELECT MATCH

Ø	0,08	0,10	0,12	0,14	0,16
kg	0,7	1,0	1,5	2,0	2,7
Ø	0,18	0,20	0,22	0,25	0,28
kg	3,0	4,0	5,0	6,0	6,8

CLIMAX SELECT FLUOROCARBON

Ø	0,13	0,15	0,17	0,18	0,20
kg	1,5	1,9	2,4	2,8	3,4
Ø	0,22	0,25	0,27	0,28	0,30
kg	3,9	4,7	5,0	5,9	6,8
Ø	0,33	0,36			
kg	7,5	9,4			

CLIMAX SELECT HIGH TEC

Ø	0,16	0,18	0,20	0,22	0,24
kg	2,6	3,0	3,8	4,1	4,5
Ø	0,28	0,30	0,33	0,37	0,40
kg	5,4	6,5	7,5	10,0	12,0
Ø	0,45	0,50	0,60	0,70	
kg	14,0	16,0	23,0	29,0	

CONCEPT PRO LINES – MONOFILAMENT

Breaking strain, knot strength, suppleness, abrasion resistance and color of the lines are combined without compromise and perfectly matched to their individual purpose. It is the perfect choice for anglers who value the elasticity of monofilament lines for fishing at close and medium distances.



CLIMAX MATCH / STIPP-LINE

This top-quality line went through a complex production process. Thanks to its molecular sealing, it does not absorb any water and maintains its remarkable strength, even after hours of fishing. Its superb knot strength is especially important with thin diameters. Adjusted stretching during the production process reduces elasticity and so allows for a lightening quick reaction.

Attributes:

- high knot strength
- low elongation

Color: light green



CLIMAX SPECIMEN-LINE

High-quality all-round line for bottom fishing, hunting big fish. This line with an extraordinary breaking strain is colored in a matted brown silk tone to avoid disturbing light reflections. Thanks to its surface coating the line is very abrasion resistant and stands severe exposure to rocks, branches and mussels. Elasticity of approx. 28% serves as a buffer when playing a fish.

Attributes:

- high abrasion resistance
- perfect elongation

Color: brown



CLIMAX ICE-LINE

Especially designed for fishing in cold temperatures

This new "cold water line" with fluorocarbon coated nylon core combines the advantages of both materials to perfection. The nylon core assures good breaking strain and knot strength, the fluorocarbon coating seals the surface, prevents water infiltration and line icing. The perfect line for fishing in freezing temperatures, e.g. ice fishing.

Color: silvergrey, hi-vis orange

CLIMAX SPIN-LINE

Special for lurefishing, spinning, plugs, jerkbaits and divers

This strong line without memory was designed especially for spinning and trolling. Even after longer use, it does not twist and its extremely low elasticity allows exact bait control and quick reaction to set the hook properly.

Attributes:

- low elongation
- exact bait control
- low memory

Color: grey



CLIMAX MATCH / STIPP-LINE

Ø	0,12	0,14	0,16	0,18	0,20
kg	1,5	1,9	2,6	3,2	4,0

Ø	0,23	0,26	0,28
kg	4,5	6,0	6,8

CLIMAX SPECIMEN-LINE

Ø	0,24	0,27	0,32	0,35	0,40
kg	4,3	5,2	7,0	8,0	11,0

Ø	0,45	0,50
kg	13,0	15,0

CLIMAX ICE-LINE

Ø	0,12	0,14	0,16	0,18	0,20
kg	1,4	2,0	2,5	3,0	3,5

CLIMAX SPIN-LINE

Ø	0,16	0,18	0,20	0,22	0,25
kg	2,5	3,1	3,8	4,3	5,5

Ø	0,28	0,30	0,35	0,40
kg	7,1	8,2	10,6	13,5

SOFT & STRONG LINES – MONOFILAMENT

The most solid and reliable fresh and salt water lines can be found in this program. They reflect over 50 years of experience with fishing line and are available at superb prices. CLIMAX Soft & Strong is successfully used by anglers between Alaska, Patagonia and Australia, from the Caribbean through Europe all the way into Mongolia.

CLIMAX SOFT & STRONG

This all-round line combines strength, suppleness and elasticity in a very well-balanced combination. It definitely is the right choice for anglers who want to cover all the areas of their passion with a really good line.

Attributes:

- Good breaking strain and knot strength
- Suitable for fresh and salt water
- Transparent, nearly invisible in water

Color: white, blue, green, grey, brown, pink, rainbow

CLIMAX SOFT PLUS

The perfect line for anglers who appreciate a soft line with little memory and higher elasticity absorbing heavy strokes of a fighting fish. In close and middle distances this line is ideal for delicate fishing for fresh water as well as sea fish in all sizes.

Attributes:

- High suppleness
- Lower memory effect
- Very good sensibility

Color: light blue, transparent, his-vis yellow

CLIMAX SALTWATER

CLIMAX SALTWATER is a hard, abrasion resistant fishing line that sea anglers will find ideal for boat and beach fishing. The special surface guards against abrasion and its toughness prevents salt crystal damage.

Attributes:

- Particularly resistant to UV rays
- High abrasion resistance
- Hard surface that resists salt crystals

Color: orange, yellow, blue, transparent

CLIMAX FLUOROCARBON

We give the angler the possibility to catch tricky fish in over fished or cristal clear water with this special line. Fluorocarbon refracts light in a similar way as water and is therefore almost invisible to fish. It quickly breaks through the surface tension, because it is heavier than water, and floats inconspicuously under the surface. Since this line is water proof, the breaking strain remains at 100% even when wet for hours.

Attributes: • Waterproof and UV-resistant

- Sinking (3 times heavier than nylon)
- Invisible under water
- High abrasion resistance

Color: transparent

CLIMAX STRONG PLUS

Thanks to its low elasticity and high breaking strain, this line conveys direct bait contact, even over a wider distance. The hook can be set very quickly.

It is very well protected against abrasion, thanks to its hard surface.

Attributes: • Very high breaking strain and knot strength

- Low elasticity for direct bait control
- Abrasion resistant
- Ideal for fresh and salt water fishing
- Color: transparent

CLIMAX SOFT & STRONG

Ø	0,15	0,20	0,25	0,30	0,35
kg	1,6	2,8	4,2	5,7	7,2
Ø	0,40	0,45	0,50	0,55	0,60
kg	10,2	12,0	14,5	17,3	19,5
Ø	0,70	0,80	0,90	1,00	1,10
kg	25,0	33,0	38,0	46,0	55,0
Ø	1,20	1,30	1,40	1,50	1,60
kg	65,0	70,0	80,0	90,0	96,0
Ø	1,80	2,00			
kg	110,0	125,0			

CLIMAX SOFT PLUS

Ø	0,15	0,18	0,20	0,22	0,25
kg	2,2	2,8	3,5	4,3	5,0
Ø	0,30	0,35	0,40	0,45	0,50
kg	7,2	9,1	11,5	14,3	17,0
Ø	0,60	0,70			
kg	20,0	24,0			

CLIMAX SALTWATER

Ø	0,25	0,28	0,30	0,35	0,40
kg	5,0	6,2	7,0	9,0	11,8
Ø	0,50	0,60	0,70		
kg	17,4	21,3	27,8		

CLIMAX FLUOROCARBON

Ø	0,10	0,12	0,14	0,16	0,18
kg	0,8	1,0	1,7	2,3	2,6
Ø	0,20	0,23	0,25	0,28	0,30
kg	3,4	4,2	4,6	5,8	6,4
Ø	0,33	0,35	0,40	0,45	0,50
kg	7,2	7,7	10,0	12,3	14,0
Ø	0,60	0,70	0,80	0,90	1,00
kg	16,0	20,0	24,0	30,0	40,0

CLIMAX STRONG PLUS

Ø	0,12	0,14	0,16	0,18	0,20
kg	1,5	1,95	2,6	3,3	3,9
Ø	0,22	0,25	0,28	0,30	0,35
kg	4,5	5,7	6,7	7,9	12,0
Ø	0,40	0,45	0,50		
kg	14,0	17,0	21,0		

SPECIAL LINES – MONOFILAMENT

Specialists accomplish more! With this in mind we have put together a program of special fishing lines, which are very unique on the fishing line market. As innovative line developers, we have utilized every possible material combinations and refinements, in order to create a truly unique line from each of their attributes.



CLIMAX SPECIAL ANTI TWIST

Ø	0,22	0,24	0,26	0,30	0,33
kg	3,6	4,2	5,2	7,2	8,3

Ø	0,37	0,40
kg	10,0	11,3

CLIMAX SPECIAL PROTECTOR

Ø	0,20	0,25	0,30	0,35	0,40
kg	3,4	4,9	6,7	8,8	11,2

Ø	0,45
kg	13,3



CLIMAX SPECIAL PROTECTOR

This monofilament sets a new standard for abrasion resistance and long-life. Thanks to a special combination of raw material and multiple stretching, it is resistant to external influences like rock, mussels, sunken trees and limbs. It is 8 times more abrasion resistant than a normal nylon line! Its protection works from the inside out and remains constantly intact. It is the best choice for every bottom and saltwater angler who want a long-lasting and reliable fishing line.

Color: silver



CLIMAX SPECIAL SYNERGY

This innovative fishing line unites the best attributes of two proven materials: The strength of the nylon core lies in its high breaking strain and knot strength, the fluorocarbon mantel is water-proof and seals the line core. Synergy utilizes innovative manufacturing technology as well as modern materials for the angler like no other line.

Color: lightgrey, orange



CLIMAX SPECIAL ANTI TWIST

This line with minimum memory is the ideal solution for every angler when it comes to pin-point casting and variable bait control. The suppleness of this line prevents line twisting and memory. Because of its controlled elasticity bait and fish can be handled very sensitive and in all promising manners. Because of its surface coating it is perfectly suitable in fresh and salt water.

Color: steelgrey



CLIMAX SPECIAL SYNERGY, lichtgrau

Ø	0,18	0,20	0,22	0,25	0,28
kg	3,4	4,0	4,4	5,8	6,8

Ø	0,30	0,33	0,37	0,40	0,50
kg	8,3	9,3	11,5	13,0	18,0

CLIMAX SPECIAL SYNERGY, orange-matt

Ø	0,18	0,20	0,22	0,25	0,28
kg	3,0	3,5	4,0	5,6	6,1

Ø	0,30	0,33	0,37	0,40	0,50
kg	7,5	8,6	10,5	11,0	18,0

SPECI-FISH LINES

We have put a lot of time, effort and testing into the CLIMAX range of target species fishing lines. The results are clearly visible; a range of premium lines with high breaking strains that keep their promise! These lines are not just the right colour for the fish you're targeting. The elasticity, hardness and abrasion resistance have been finely balanced to suit the application, tackle and method required by the individual species. CLIMAX lines provide unbeatable quality and price.

CLIMAX EEL

Ø	0,30	0,35	
kg	7,9	10,2	
m	400	300	

CLIMAX CODFISH

Ø	0,40	0,50	
kg	12,2	17,3	
m	250	200	

CLIMAX PIKE

Ø	0,30	0,35	0,40
kg	7,9	10,2	12,2
m	400	300	250

CLIMAX CARP

Ø	0,25	0,30	0,35
kg	5,6	7,9	10,2
m	500	400	400

CLIMAX TROUT

Ø	0,17	0,20	0,23
kg	2,9	3,7	4,3
m	500	500	500



CLIMAX EEL

- especially abrasion resistant
- camouflage effect through dark colour

Color: brown



CLIMAX CODFISH

- low elongation for heavy lures/baits
- high visibility for controlled fishing

Color: yellow



CLIMAX PIKE

- excellent knot strength
- low elongation for better contact to lure and fish

Color: grey



CLIMAX CARP

- special abrasion protection on surface
- ideal elongation when playing the fish

Color: brown



CLIMAX TROUT

- excellent knot strength
- extremely smooth and easy to cast

Color: light-blue



CLIMAX SEABREAM

- high tensile strength
 - highly resistant against saltwater
- Color: light-blue



CLIMAX SEABASS

- high saltwater resistance
 - smooth surface for better casting
- Color: transparent



CLIMAX CATFISH

- absorbs strong hits
 - high tensile strength
- Color: green



CLIMAX BREAM

- very soft and smooth
 - almost invisible in the water
- Color: white



CLIMAX PIKE PERCH

- high tensile strength
 - low elongation for better contact to lure and fish
- Color: light-grey



CLIMAX SEABREAM

Ø	0,28	0,30	0,35	0,40
kg	7,2	7,9	10,2	12,2
m	300	300	300	300

CLIMAX SEABASS

Ø	0,28	0,30	0,35	0,40
kg	7,0	8,0	9,5	12,0
m	300	300	300	300

CLIMAX CATFISH

Ø	0,50	0,60		
kg	17,3	19,5		
m	200	200		

CLIMAX BREAM

Ø	0,15	0,18		
kg	2,4	3,0		
m	500	500		

CLIMAX PIKE PERCH

Ø	0,24	0,28		
kg	5,2	7,2		
m	500	400		

„HARUNA SEAMASTER“ LINES

We offer sea anglers an innovative all-in-one package with this all encompassing saltwater program that suits our competent dealers and customers in the area of deep sea fishing. Breaking strain, elasticity, abrasion resistance and precision are harmonized through the most modern technology in monofilament and multifilament line manufacturing.

HARUNA WIND-ON-LEADER, Fluorocarbon

lbs	20	30	50	80	100
-----	----	----	----	----	-----

lbs	150	200
-----	-----	-----

HARUNA WIND-ON-LEADER, Hard Leader

lbs	20	40	60	90	130
-----	----	----	----	----	-----

lbs	175	220
-----	-----	-----

CLIMAX SURF-LINE

Knotless tapered line 220 m
Color: 4 changing colors and transparent taper

Ø	0,26 - 0,58	0,28 - 0,58
---	-------------	-------------

Ø	0,33 - 0,58	0,37 - 0,58
---	-------------	-------------

CLIMAX SURF-LINE

Tapered leader
Color: transparent

Ø	0,26 - 0,58	0,28 - 0,58
---	-------------	-------------

Ø	0,33 - 0,58	0,37 - 0,58
---	-------------	-------------

HARUNA SEAMASTER IGFA QUALITY

lbs	12	16	20	30	50
-----	----	----	----	----	----

lbs	80	130
-----	----	-----

HARUNA SEAMASTER DACRON

lbs	12	20	30	50	80
-----	----	----	----	----	----

lbs	130
-----	-----

HARUNA PLANER BOARD LINE

Ø	1,30	1,60			
---	------	------	--	--	--

kg	130	175			
----	-----	-----	--	--	--

CLIMAX WIND-ON LEADER

The perfect leader - ready to fish! CLIMAX WIND ON LEADERS meet the toughest requirements of the world's best off shore competition anglers. They are easy to use, withstand the strongest fights and slip back easily through the tip guide when playing fish close to the boat for safer landing or releasing fish. Armed with CLIMAX FLUOROCARBON the Wind-On Leader is perfect for frequently fished waters whereas CLIMAX HARD LEADER virtually boosts the leaders breaking strain and is the right choice for real big fish... both are incredible abrasion resistant and durable. Make your choice!

CLIMAX SURF-LINE

Aerodynamic tapered line with color coding for extreme distances. You will achieve greater distances with the aerodynamic taper of this surf line than you would with a parallel line. It is effectively protected from sand, rocks and mussels by a special surface coating. In order to better estimate casting distance, the lines entire length is four-colored contrasted. We also offer the tapered shock leaders separately at a total length of 15 meters and at five pieces per spool.

HARUNA SEAMASTER IGFA QUALITY

This monofilament Big Game line meets 100% of the IGFA (International Game Fish Association) standards on the precise calibration of international competition line and catches unbelievably good as well! Ask the pros!

Attributes: • Exact calibration according to IGFA Standard • Regulated elasticity, for strong hooking performance and buffer when playing the fish
• Optimal color for lowest possible under water visibility
Color: salmon pink

BRAIDED CLIMAX DACRON

The classic, DACRON, was the worldwide leader in braided fishing line for years. Today, it is an economical alternative to modern lines made DYNEEMA®-Fibres. The tightly braided line is made up of 12 up to 16 strands of Polyester; it has low elasticity and high breaking strain. Its main purpose is for catching big game fish in saltwater.

Color: white with green dots

HARUNA PLANER BOARD LINE

Finally a high-end professional Planer Board Line made from 100% Dyneema®. This very strong and highly abrasion resistant line has an extremely smooth surface – perfect for using Planer boards all over the world.

Color: orange



HARUNA SEAMASTER MONO

This special Mono for all types of saltwater fishing has a surface structure, fitted to all of these special requirements, which effectively prevents line damage caused by salt crystal. Thanks to low elasticity and high abrasion resistance, this line is ideal for pirk fishing and suitable for trolling.
Color: light-blue



HARUNA SEAMASTER HARD LEADER

This leader material has been developed, through its special hardening, for the roughest fishing in deep sea, ledges, coral and mussel reefs. It sticks stiffly out from the main line and holds the hook in the correct position. With such a high breaking strain (180 kg at just 1.60 mm diameter), even a Halibut of 150 kg would not be a problem. Haruna Seamaster Hard Leader is even successfully used in professional fishing and valued for its transparency.

Attributes:

- Ideal also for professional sea fishing

Color: light-grey



HARUNA SEAMASTER FLUOROCARBON

This leader material is almost invisible for fish, thanks to a light refraction index that is almost that of water. The leader sinks 3x faster than leaders made of nylon, it is UV-resistant, resistant to cold and waterproof, so that the original breaking strain remains the same even after hours of fishing.

The perfect leader for frightened fish or over-fished waters.

Color: transparent



HARUNA SEAMASTER LEADER

This exclusive leader material is capable of an enormous breaking strain – 95 kg with just 1.20 mm diameter – and nevertheless does not have problems with knots. Whether a self-knotted paternoster or a deep sea leader, you can completely rely on this monofilament.

Color: transparent



BRAIDED – HARUNA SEAMASTER BRAID

This braid is the best saltwater line we know, with extremely tight and round braiding and complex special coating that protects against abrasion and salt crystal. With low friction coefficient, similar to a monofilament, this line has proven an extraordinary reliability in the Norwegian deep sea or in the Caribbean.

Color: yellow



HARUNA SEAMASTER MONO

Ø	0,30	0,35	0,40	0,50	0,60
kg	6,3	7,9	11,2	16,0	21,4

Ø	0,70	0,80	1,00	1,20
kg	27,5	36,0	51,0	66,0

HARUNA SEAMASTER HARD LEADER

Ø	0,60	0,75	0,90	1,05	1,20
kg	30,0	42,0	60,0	80,0	100

Ø	1,45	1,60
kg	150	180

HARUNA SEAMASTER Fluorocarbon

Ø	0,40	0,50	0,60	0,70	0,80
kg	10,0	14,0	17,0	20,0	24,0

Ø	0,90	1,00	1,20	1,30	1,50
kg	30,0	40,0	50,0	68,0	90,0

HARUNA SEAMASTER LEADER

Ø	0,60	0,70	0,80	0,90	1,00
kg	24,0	32,0	42,0	51,0	68,0

Ø	1,20	1,40
kg	95,0	120

HARUNA SEAMASTER BRAID

Ø	0,20	0,25	0,28	0,30	0,35
kg	15,0	17,0	23,0	29,0	34,0

Ø	0,40	0,50	0,60
kg	36,0	54,0	72,0

CATFISH FLOAT SET – STIFF TUBE

Ø	0,90	1,00	1,30
kg	80	100	130
cm	150	150	150
gr	30	60	150

CATFISH FLOAT SET – STIFF MONO

Ø	1,60	1,60
kg	180	180
cm	150	150
gr	60	150

SPINNING RIG - MONOFILAMENT

Ø	0,75	1,05	1,20
kg	40	80	100
cm	60	60	60

SPINNING RIG - BRAIDED

Ø	0,90	1,30
kg	80	130
cm	60	60

**CATFISH PELLET/
EAL HAIR RIG**

Ø	1,30
kg	130
cm	110
single hook	9/0

**CATFISH BIOY/DRIFT RIG FOR
USING BAIT FISH**

Ø	1,30
kg	130
cm	40
treble hook	6/0
single hook	9/0

CATFISH LEECH RIG

Ø	0,90	1,00
kg	80	90
cm	30	30
treble hook	3/0	4/0
single hook	6/0	7/0

**CATFISH BUOY/DRIFT RIG FOR
USING BAIT FISH**

Ø	1,30
kg	130
cm	150
treble hook	6/0
single hook	9/0

CULT CATFISH

The braided rig line is 5x more abrasion resistant than other braids, all swivels come with ball bearings to fit the toughest needs of angling catfish and all rigs feature highly break-proof "Eagle Claw" hooks specially processed by the 'Needle-Tip' treatment for an extra sharp point.

CATFISH FLOAT SET – STIFF TUBE

This complete set contains a stiff tube, a float, swivels and a highly abrasion resistant Catfish Leader Braid. This rig is perfect for lakes and slow currents since the stiff tube prevents the bait from getting tangled with the mainline or weak link. After shortening the tube to the desired length, thread the leader, make a loop and attach the mainline swivel. The second swivel is ready fixed and perfectly fits with our Leech- or Bait Fish Rigs.

CATFISH FLOAT SET – STIFF MONO

This system works similar to the Tube Rig but features a stiff and abrasion resistant anti-tangle co-polymer replacing the tube. The mainline swivel allows to easily connect a weak link to a stone. Best performance will be achieved when combining this set with our Leech- or Bait Fish Rigs.

CATFISH SPINNING RIG - MONOFILAMENT

This monofilament companion to the braided spinning rig is tied on a special co-polymer for extra abrasion resistance, transparency and finally to prevent catfish from extreme injury. Additionally the stiff leader avoids the bait to get tangled with the mainline.

CATFISH SPINNING RIG - BRAIDED

The perfect length for fishing lures such as Wobblers, Spoons or Shads. This first-class rig features maximum abrasion resistance and best accessories available.

CATFISH PELLET/EAL HAIR RIG

Featuring a Latex coated Eagle-Claw hook this rig tributes to the extreme Metal sensitivity of catfish. The interlaced hair rig is perfect for fishing with Pellets or Eel. The generous length allows to individually customise the rig.

CATFISH BIOY/DRIFT RIG FOR USING BAIT FISH

Extra long leader and large hook for buoy fishing – long enough for customizing length.

CATFISH LEECH RIG

Ready made to be fixed to a float or lead this rig features a treble hook for rigging leech or squid. The razor sharp single hook is at extra short distance and so virtually hides inside the leech – best combination with Climax Float Sets.

CATFISH BUOY/DRIFT RIG FOR USING BAIT FISH

This particular rig is ready made and just needs to be fixed to your float – best combination with Climax Float Sets.



The CLIMAX catfish program has earned itself an excellent reputation right throughout Europe's catfish centres. Whether in Italy, Spain, France or Germany many leading anglers trust CLIMAX CULT catfish line, their success proves them right.

CLIMAX CATFISH X-CAST

This catfish spinning line has been specially developed and tested under extreme conditions. The special sealing process, which has been tested by neutral laboratories, makes this line not just smooth as a monofilament line, but it is also more resistant to abrasion than any comparable braided line. This is the ideal fishing line for waters plagued by mussel beds and sharp stones, a line that pros can trust!

Color: red-brown



CLIMAX CATFISH LEADER

We have utilised the same production process as used in CATFISH X-CAST to develop this leader material out of abrasion resistant DYNEEMA®-Fibres. It remains very supple – for perfect bait presentation – and is very easy to work with. The durability of this leader is extremely high.

Color: grey, yellow



CLIMAX CATFISH FLASH

This specially developed fluorescent line has been based on our Catfish Strong. Highly specialised fluorescent fibres have been included in the weave of the DYNEEMA®-Fibre braid. They store light, which can be provided by a torch or other light source, so that the lines are highly visible for about 15 minutes. Breakoffs or other accidents in the dark are a thing of the past.

Color: Hi-Vis yellow



CLIMAX CATFISH X-CAST

Ø	0,28	0,39			
kg	25	40			

CLIMAX CATFISH LEADER

Ø	1,00	1,30			
kg	100	135			

CLIMAX CATFISH FLASH

Ø	0,65	0,90			
kg	60	80			

CLIMAX CATFISH STRONG

Ø	0,60	0,75	0,92		
kg	60	75	80		

CLIMAX CATFISH STRONG

Developed for one of the strongest freshwater fish in the world, the Catfish Strong displays its strength under the hardest conditions: The extremely tight and round, 100% DYNEEMA®-Fibres braided line achieves 5 times higher abrasion resistance thanks to the multiple coating developed exclusively by us. Rocks, mussels, roots or limbs cannot harm this line and with its white color, it ensures good visibility. Whether its buoy fishing or bottom rigging, Catfish Strong can be trusted upon.

Color: brown, white



PREDATOR LINES



CLIMAX HARD MONO – The Original

This predatory fish leader material is made up of extremely abrasion resistant nylon with a special hardened surface. It has the suppleness and transparency of nylon and the bite resistance of a steel leader. This leader material is suited for catching Pike, Pike perch and other predators in fresh water as well as Bonefish and Tarpon in salt water.

Attributes:

- Flexible like nylon
- Bite resistant like steel

Color: transparent



CLIMAX Drop Shot Fluorocarbon

This leader was especially developed for the drop shot fishing. It has the same refractive index as water and an excellent strength. This leader is made of 100% Fluorocarbon and therefore almost invisible to fish.

The ideal leader for Drop Shot specialists!

Color: transparent

CLIMAX HARD MONO

lbs	10	20	30	40	50
kg	4,5	9,1	13,6	18,1	22,7

lbs	60
kg	27,3

CLIMAX DROP SHOT FLUOROCARBON

Ø	0,18	0,20	0,23	0,25
kg	2,6	3,4	4,2	4,6

CLIMAX TOOTHY CRITTER

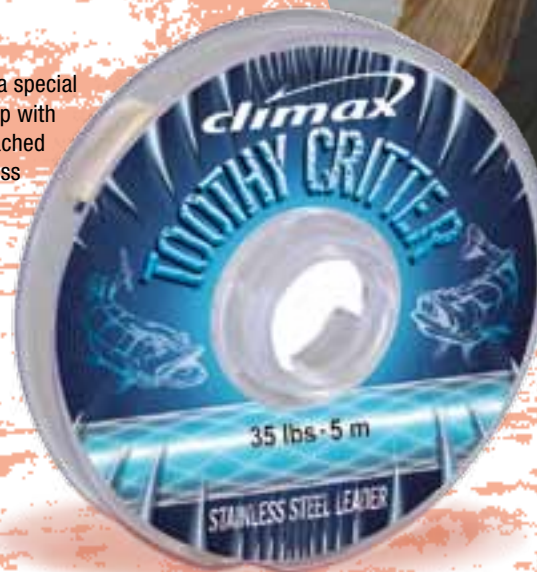
kg	4,5	6,8	9,1	15,9	22,7
lbs	10	15	20	35	50

CLIMAX TOOTHY CRITTER

This steel leader, which can be knotted, has a special mantle that can be carefully welded to a loop with a flame. Bait can be easily and quickly attached with a clinch knot. Now you have a knotless looped steel leader with maximum breaking strain and suppleness.

Attributes:

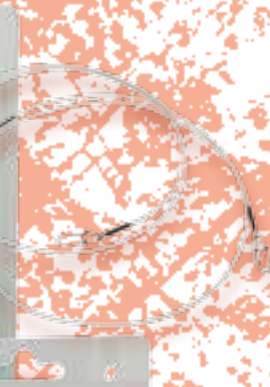
- Flexible and supple
 - Steel core
 - Can be knotted and welded
- Color: green





CLIMAX PREDATOR LEADER

The original CLIMAX hard mono is now available as a ready-made leader for predator fishing. The perfect leader for lure fishing, with swivel and snap-link included.
Content: 2 pc. • Length: 30 cm



CLIMAX SHAD LEADER

Thanks to the use of fluorocarbon, this virtually invisible leader is very abrasion resistant. The length and hard-wearing qualities make it the perfect trace for the shad professional.
Content: 2 pc. • Length: 50 cm



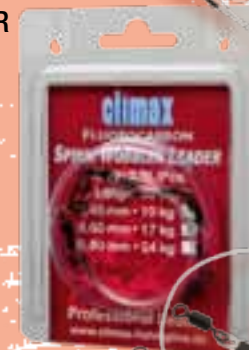
CLIMAX JERK LEADER

A fluorocarbon jerk bait leader – stiff, practically invisible, and highly resistant to abrasion. Unlike steel, this leader gives the professional jerk bait angler the advantage he needs on extensively fished waters.
Content: 2 pc. • Length: 20 cm



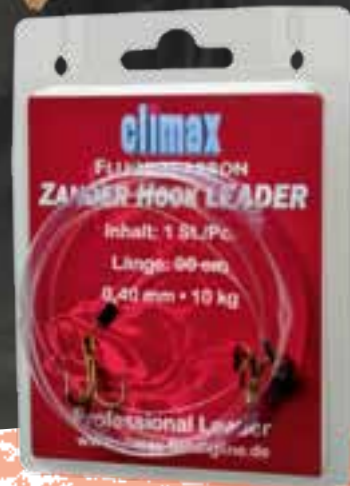
CLIMAX SPINN AND WOBBLER LEADER

Thanks to fluorocarbon, this leader is nearly invisible and highly resistant to abrasion from predator's sharp teeth. Two swivels ensure that the lure runs true.
Content: 2 pc. • Length: 50 cm



CLIMAX ZANDER HOOK LEADER

The classic Zander leader for natural baits. Made from fluorocarbon, it is fast-sinking, highly abrasion resistant and virtually invisible.
Content: 1 pc. • Length: 90 cm



CLIMAX PREDATOR LEADER

Ø	0,32	0,50	0,60	0,70
kg	4,5	9,1	13,6	18,1

CLIMAX SHAD LEADER

Ø	0,80			
kg	24,0			

CLIMAX JERK LEADER

Ø	0,80			
kg	24,0			

CLIMAX SPINN/WOBBLER LEADER

Ø	0,40	0,60	0,80	
kg	10,0	17,0	24,0	

CLIMAX ZANDER HOOK LEADER

Ø	0,40			
kg	10,0			

„CULT“

A system to success – You find everything necessary for successful carp fishing. The perfect carp line, innovative leader materials for all different sorts of applications, proven “ready-made-rigs” as well as tools.

CULT Sinking Mainline Braid

Probably the most considerable innovation in carp tackle for 2012. Ultra strong HMPE fibres give this line the best LB/diameter ration ever seen amongst sinking mainline braids for carp angling – this is something you definitely have to see! Blended with new developed HD-fibres the braid becomes much more abrasion resistant and extremely heavy – it literally sinks to the ground like Leadcore. Pristine 8-fibre-braiding-technology and a perfectly balanced picks-count create a super round profile, suppleness and reduce friction for silent and longest possible casting.

CULT FLUOROCARBON

Just for mainline or rig making the brand new CULT Fluorocarbon is without doubt the ideal line to use. Unlike conventional Fluorocarbons on the market, it is very supple and has low memory. Cult Fluorocarbon consequently casts further and performs better knot strength than others. Thanks to an extremely high density this line quickly sinks the ground and with its discreet shade of olive it perfectly blends into the lake bed.

CULT Carp-Line

Best available raw materials for stability and increased life span. Specially formulated surface for extra abrasion resistance and cast ability. Unidirectional molecule structure for maximum breaking strain and controlled elasticity. Polymer additives for perfect suppleness and lowest possible memory. Linked molecules increased for up to 90% stronger knots. Computer controlled line diameter, density for consistent breaking strain and maximum reliability.
Color: black

CULT Extreme

The perfect mainline for extreme situations that demand everything from your tackle. This handy and super supple line has got nothing in common with what you know about carp lines until today. An extra process in production adds incredible abrasion resistance exceeding other monofilaments by up to 12 times. Memory does almost not exist with the CULT Extreme line and a 20-25% elasticity allow to control a hooked fish in every situation. Its mattfinished throughout olive colour is really impressive and virtually vanishes in an underwater ambience.
Color: olive camou



CULT SINKING BRAID

Ø	0,14	0,16	0,20	0,25
kg	12,3	14,2	19,4	25,0
lbs	25,0	30,0	40,0	50,0

CULT FLUOROCARBON

Ø	0,25	0,28	0,35	0,40	0,45
kg	4,8	5,5	8,0	10,6	12,5
lbs	10,0	12,0	17,0	22,0	25,0

CULT CARP-LINE

Ø	0,25	0,28	0,30	0,34	0,38
kg	5	6,1	7	9	11

CULT EXTREME

Ø	0,28	0,30	0,35	0,40
kg	5,9	7,2	9,2	11,5
lbs	12	15	20	25



The CULT program is explained with regards to function and application on the backside of each package and in the accompanying insert.



Use CULT Skin Braid to make your most inconspicuous rig in a totally tangle free manner. Coated with a highly abrasion resistant, removable anti-tangle skin this line is a must have in every tackle box.

SKIN BRAID

Simply remove the coating to expose the ultra supple and superb realistic camouflage braid that perfectly blends in with all possible lake beds.



Algae

Camouflage

Silt

Weed



SINKING HOOK LINK

High-End sinking braid for making your own ultra supple and superb realistic camouflage rigs. This naturally sinking braid perfectly blends in with the lake bed and inconspicuously presents the bait. Perfect on waters where fish have wised up to conventional rigs.



HUNTERS BRAID

Thanks to its special fibre treatment and camouflage surface sealing, this leader is especially abrasion resistant and made for waters with rocky grounds, mussel beds and stubborn roots.



Camouflage



Dark green

DYNA SPLICE

100% strength and reliability. This unrivalled, spliceable leader is made from 100% pure DYNEEMA®-Fibres and is perfect for a variety of rigs.



SKIN BRAID

lbs	20	30
kg	9,1	14,5
m	20	20



HOOK LINK

lbs	20	30
kg	9,1	14,5
m	20	20



HUNTERS BRAID

Ø	0,25	0,30	0,45
kg	12	15	20
lbs	25	30	40



DYNA SPLICE

lbs	20
kg	9,1
m	20



DURAMAX LEADER

Ø	0,14	0,18	0,24	0,30	0,35
kg	10	15	20	25	30



LEAD CORE SUPER SUPPLE

lbs	15	25	35	45
kg	7	12	15	22
m	10	10	10	10



HEAVY METAL CORE

lbs	35			
kg	15			
m	5			



BAIT FLOSS



DURAMAX LEADER

Extremely smooth and 5x more abrasion resistant shock leader made of braided DYNEEMA®-Fibre to relieve the main line during far casts. A perfect combination with Climax CULT EXTREME!

Length: 25 m



red-brown



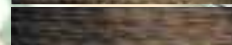
LEAD CORE – SUPER SUPPLE

This lead core material features an abrasion-resistant and easily spliceable sheath, is extremely heavy and virtually disappears on the lake or river bed. It is ideal for both, inline and bolt rigs.

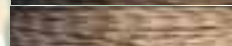
Weed



Silt



Gravel



HEAVY METAL CORE

Instead of the normal lead core, a metal alloy, which does not burden waters, is used. The material is extremely abrasion resistant and easy to splice with the tight protective braiding. Ideal for fishing on water beds with obstacles.

Camouflage



BAIT FLOSS

Silky soft DYNEEMA®-Fibre is floating and almost invisible – the ideal thread for natural acting standard- and loop – rigs with pop-up boilies.

Ideal to combine with CLIMAX CULT Hunters Braid.

Length: 25 m • Color: white





LEAD CORE LEADER – ALL PURPOSE

This abrasion-resistant lead core leader is heavy and virtually disappears on the lake or river bed. Equipped with a loop on one end and a swivel on the other end, it is suitable for both, inline and bolt rigs. The perfect choice for muddy water beds and wary fish. Combine with Climax CULT Hunters Braid as hooklink!

	Weed
	Silt
	Gravel

LEAD CORE LEADER – SAFETY BOLT CLIP

This ready-made bolt rig features an abrasion resistant sheath for difficult waters. Extra heavy and supple, it sinks quickly and virtually disappears on the lake or river bed. All materials used are of the highest quality and perform to the maximum even after long-term use.

TUNGSTEN LEADER

This ready-made high quality bolt rig features super fast-sinking Tungsten coating, which is non-toxic and blends in naturally with the lake or river bed. Its pliable skin is extra fishfriendly and in case of line breakage the Bolt Clip releases the lead when getting caught by obstacles. All materials are of the highest standard and will continue to produce the best results even after long-term use.
Content: 1 piece/pack • Color: dark olive-green

TUNGSTEN LEADER

This non-toxic, top-class carp leader features a fast-sinking Tungsten coating and perfectly blends into the lake or river bed. With a very smooth surface, it is suitable for both inline and bolt rigs. The ideal choice when it comes to muddy waters and shy fish.
Content: 1 piece/pack • Color: dark olive-green

CLEAR LEADER

Featuring an extra-smooth, soft coat, this top-quality clear leader sinks and virtually vanishes on the lake or river bed. It is suitable for both in-line and bolt rigs. This leader is a „musthave“ in your tackle box and the perfect choice for clear water and shy fish.
Content: 1 piece/pack • Color: transparent

HEAVY METAL LEADER

This non-toxic ready-made bolt rig features an abrasion resistant sheath for difficult waters. Extra heavy and particularly supple, it sinks quickly and virtually disappears on the lake or river bed. All materials used are of the highest quality and continue to produce the best results even after long-term use.
Color: camouflage



LEAD CORE LEADER, All Purpose

lbs	25	35	45		
kg	12	15	20		



LEAD CORE LEADER

lbs	25	35	45		
kg	12	15	20		



TUNGSTEN LEADER



TUNGSTEN LEADER

cm	70				
----	----	--	--	--	--



CLEAR LEADER

cm	70				
----	----	--	--	--	--



HEAVY METAL LEADER

lbs	35				
kg	15				





„CULT“



TUNGSTEN CHOD RIG

This ready-made top-class rig meets the highest demands of the modern carp angler. The heavy tungsten coating slightly sinks into the weed and unsuspectingly presents pop-up boilies on top. The lead is far enough not to drag and hide the boilie into the lake bed. Non-Toxic and fish-friendly.

Content: 1 piece/pack • Color: dark olive-green



HELICOPTER RIG

This ready-made, top-class helicopter rig has unique aerodynamic properties to give you a decisive advantage for casting extreme distances. The free rotation device ensures that your rig never gets tangled. The fast-sinking Tungsten coating is extremely fishfriendly and non-toxic.

Content: 1 piece/pack • Color: black



SHRINK TUBE

Careful steaming of the tube will shrink it by 50%. This makes it ideal for various rigs such as line-aligner rigs and many other. Should not be exposed to flame as this could harm the material.

Color: transparent, black



SPLICING NEEDLE – QUICK CHANGE

The perfect tool for making knotless connections or rigs using Leadcore, Climax Dyna Splice or other material. Ask your dealer for a Climax refill pack if you run out of needles.

Content: 1 piece/pack + 4 spare needles



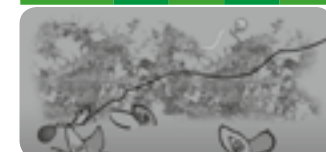
SPLICING NEEDLE REFILL

Refill pack for CULT Splicing Needle - Quick Change (6 Pieces).

Content: 6 pieces/pack

TUNGSTEN CHOD RIG

cm 130



HELICOPTER RIG

cm 60

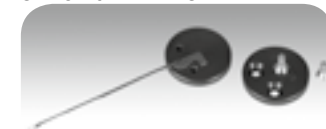


SHRINK TUBE

Ø	1,6	2,4
m	1	1



SPLICING NEEDLES



We worked with an American tooling specialist to create this series of high quality tools. Many patents such as the "Power Jaws" along with uncompromising workmanship and materials make this range exclusive. For example, the very best stainless steel is utilized in making the pliers and scissors. These tools are certainly going to last a long time. All scissor blades and clippers have been specially hardened and sharpened so that they consistently carry on cutting monofilament and braided lines without rusting. CLIMAX TOOLS are chosen by pros who need to have complete trust in their tools.



Art. No. 100502 - LIGHTED Super Clip

LIGHTED SUPER CLIP

Bright White LED illuminates in any Light

- Features:
- Embedded hook file on the bottomside of the nipper provides convenient hook sharpening.
 - High quality honing material will sharpen the largest hooks and last a long time.
 - An ergonomically designed, stainless steel fishing line cutting tool molded to comfortably fit in all hands. Includes a threader/eye cleaning tool that slides out and rotates when needed and retracts back into the body of the nipper when not. Never lose your threader/eye cleaning tool again!
 - The embedded magnet provides a temporary holding area for hooks and flies during tippet/leader replacement.
 - Includes a tiny, white high intensity L.E.D. light for illumination. Sealed, waterproof light focuses through the stainless steel cutting edges of the nipper, illuminating the eye of the hook or other items. Very helpful in any light.

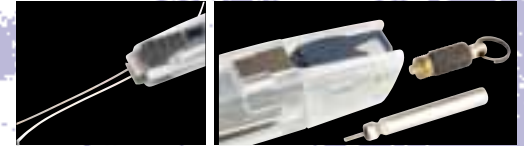


Art. No. 100501 - Super Clip

SUPER CLIP

High-end allround tool – cuts monofilaments and braids!

- Features:
- Embedded hook file on the bottomside of the nipper provides convenient hook sharpening.
 - High quality honing material will sharpen the largest hooks and last a long time.
 - An ergonomically designed, stainless steel fishing line cutting tool molded to comfortably fit in all hands. Includes a threader/eye cleaning tool that slides out and rotates when needed and retracts back into the body of the nipper when not. Never lose your threader/eye cleaning tool again!
 - The embedded magnet provides a temporary holding area for hooks and flies during tippet/leader replacement.



OPEN LOOP

Open loop handle for easy use with gloves.



Art. No. 100523
Fish Guard - 22 cm (black)

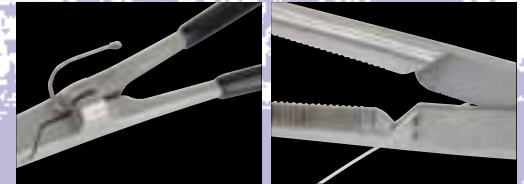
FISH-GUARD

Predator-Forceps and Scissors – 22 cm

- Features:
- stainless steel combo tool with serrated scissors
 - Hardened stainless steel scissors with micro serrated edges cut monofilaments and braids cleanly and quickly.
 - Combination of ribbed and smooth jaw surfaces hold large and small hooks securely. Patented "Power jaws" provide the clamping power of pliers!

FORCEPS:

A patented combo tool with unique lateral power jaws that „de-barb“ hooks. Provides the gripping power of pliers, eliminating the need to carry two tools. 8.5" long with three-position lock. SCISSORS: Hardened stainless steel micro-serrated edges making cutting all monofilament and braided lines clean and easy. Perfect also for very thick monofilament lines or CLIMAX Toothy Critter!



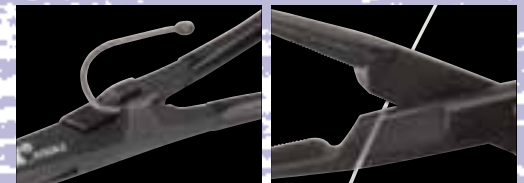
Art. No. 100521
Fish Guard - 14 cm (black)

FISH-GUARD

Forceps and Scissors – 14 cm

- Features:
- stainless steel combo tool with serrated scissors
 - Hardened stainless steel scissors with micro serrated edges cut monofilaments and braids cleanly and quickly. Patented "Power jaws" provide the clamping power of pliers!

FORCEPS: A patented combo tool with unique lateral power jaws that „debarb“ hooks. Provides the gripping power of pliers, eliminating the need to carry two tools. 5.5" (140 mm) long with three-position lock. SCISSORS: Hardened stainless steel micro-serrated edges make cutting CLIMAX braided lines and other lines clean & easy!



Art. No. 100520 - Fish Guard
13 cm (black)



Art. No. 100522
Fish Guard
curved (black)



FISH-GUARD

Forceps – 13 cm

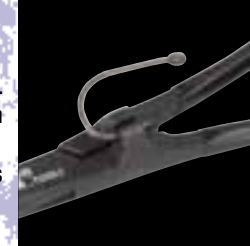
Features: • stainless steel forceps aid in holding, de-barbing and removing hooks.
• Great for crimping split shot and other weights • Combination of ribbed and smooth jaw surfaces hold large and small hooks. Patented „POWER JAWs“
Unique, patented Power Jaws™ provide pliers crimping power for flattening larger hooks.
Needle pressed into the jaws removes paint and glue from the eye of a hook or jig.



FISH-GUARD

Curved forceps

Features: • Curved stainless steel jaws make handling and removing smaller hooks easy.
• 5" stainless steel forceps aid in holding, de-barbing and removing hooks. • Combination of ribbed and smooth jaw surface holds large and small hooks firmly.
POWER JAWs de-barbs hooks, crimps split shot and provides the gripping power of pliers
Needle pressed into the jaws removes paint and glue from the eye of a hook or jig.



TOOL BAND

This is a unique attachment device that extends to over 36" (1m) and always recoils to its original form. The swivel clip rotates 360° for added flexibility. Hold all your forceps and other tools securely.

Features: • Multi-fastener is molded from engineering grade ABS and virtually indestructible. • Rubber pads on the clamping jaws secure holding on all garments. • High quality polyurethane tether extends to over 1 m. • Swivel clip hooks onto „D“ rings, belt loops, backpacks, tackle boxes and many other items. High quality Polyurethane tether extends to over 36" (1 m) and always recoils to its original shape and length of 5" (12,7 cm).



Art. No. 100512
Tool Band

MULTI LINK

Universal attachment system holds hats, jackets, gloves, keys and many other items. Works on garments, vests, backpacks, luggage, belt loops, „D“ rings and more. Rubberized clamping jaws open easily to attach to garment. Won't cut or pucker fabrics.

Features: • Locking padded jaws on the clamp grip firmly without puncturing fabric • Swivel clip rotates 360° and snaps securely onto „D“ rings, belt loops and other items • Unique hinge design enables both the clip and the clamp to swivel independently, providing freedom of movement for attached items • Rubber pads on the clamping jaws secure holding on all garments.



Art. No. 100511 - Multi Link

ZINGER PLUS

A high quality, retractable corrosion-resistant measuring tape

Features:

- High quality • corrosion resistant steel • retractable 36" (1 m or 3 ft) measuring tape doubles as a convenient Zinger for holding nippers and forceps
- Measuring tape can be used to measure fish or tippet.



Art. No. 100510 - ZINGER PLUS



MINI CLIP

Handy stainless steel line clip

- Precision ground, hardened stainless steel blades stay sharp
- Ergonomic design for added comfort and ease of use. Cuts 100 lbs line as easily as 1lbs monofilament or CLIMAX Hard Mono.



Art. No. 100503 - Mini Clip

Art. No. 100504
Also available
in a fishbowl
with 36 pcs



WONDER TOWEL

The Wonder TOWEL is a small sealed tablet that when contacted with moisture grows into a full size hand towel. It is extremely durable and reusable. The towels have no odor and are safe for all applications. Eight (8) sealed tablets come in each package



Art. No. 100513
Wonder Towel

TACKLE BOX (magnetic)

This high quality, injection molded box holds hooks, swivels, jigs and other tackle items conveniently on the chest. • Opens with one hand for added convenience • Strong magnetic plate prevents hooks and swivels from becoming dislodged and lost • Positive latch keeps box closed when not in use



Art. No. 100530
Tackle Box (Magnetic)

HATLIGHT (LED Lamp)

Clip-on LED head focuses light where you need it.

Low profile design won't block your view.

- Clear polycarbonate clip works on all hats and is virtually indestructible
- Removable light module doubles as a hand held flashlight
- Split ring on the case provides easy attachment to key rings
 - Uses two (2) CR2032 and runs for over 36 hours continuously
- Batteries are included and available where most batteries are sold



climax



OCKERT

OCKERT FILAMENTTECHNOLOGIE GMBH

BENZSTRASSE 20

D-82178 PUCHHEIM

TEL: +49 (0) 89/894083-0

FAX: +49 (0) 89/894083-20

WWW.CLIMAX-FISHINGLINE.DE

E-MAIL: INFO@OCKERT.NET