



LIFE IP: WHAT IS THIS?

Case Finland



METSÄHALLITUS



S Y K E



metsäkeskus

METLA



RIISTAN- JA KALANTUTKIMUS



MTT

Preconditions in phase 1

1. "Large" projects linked to several environmental problems on "large" geographical area

- 4 themes open: Natura 2000 management, waste, river basin management, air quality
- Linked to national/regional adopted action plan or strategy → PAF (Priority Action Framework for N2000) for Natura 2000 management
- OK to combine themes i.e. main theme and secondary theme
- More flexibility in working outside Natura 2000

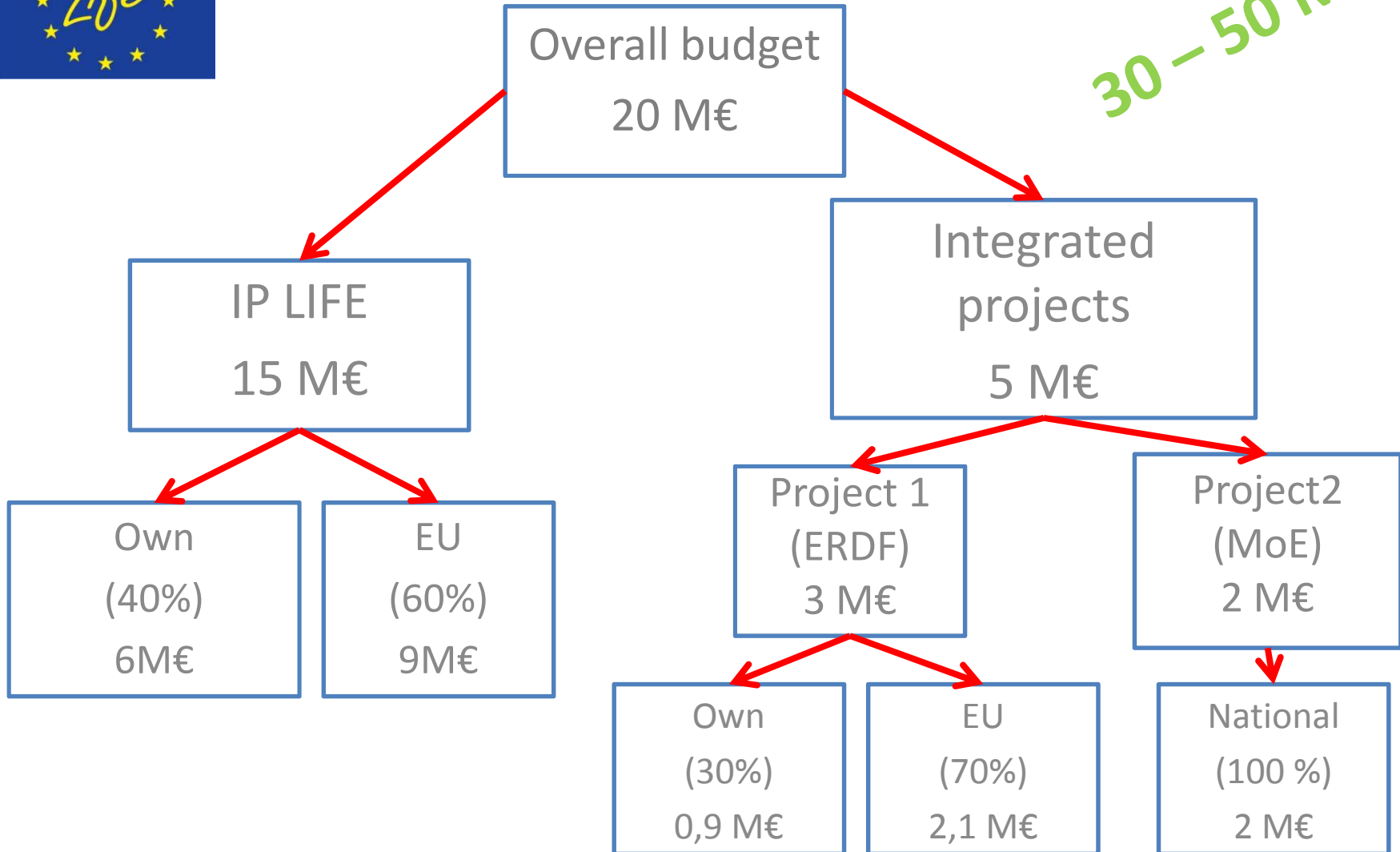
2. Mobilisation of at least one additional national or EU financial instrument/funding

- Key during the LIFE period! (projects started before maybe linked...)
- Financiers needs to commit (100%?) to financing projects from other source; letter of intent or commitment
- Risk assessment on both ends; track record



Financial model

30 – 50 M€



Preconditions in phase 1

3. *Relevant beneficiaries included with respect to the objectives of the project*

If passed the next phase merit only! Evaluation criteria?

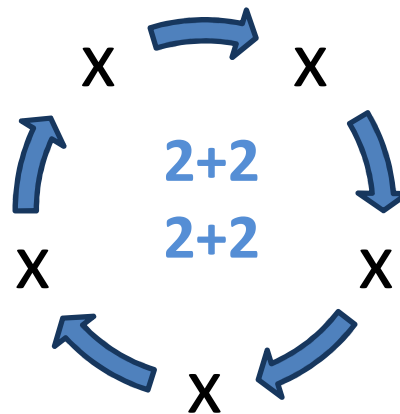


METLA



Why to submit and other interesting aspects?

- Regulation "guarantees" 3 IP –projects/country (2 x ENV ja 1 x Climate)
- EU contribution 60%
- **No recommended time limit: we plan 8 year project**
- **Indicative EU maximum 12 M€; can it be challenged...**
- 2-phase application process; new revision system (webforum)
- Execution, payments, planning in 2 year cycles





“LIFE IP: WATER connecting people”

Case Finland



METSÄHALLITUS



METLA

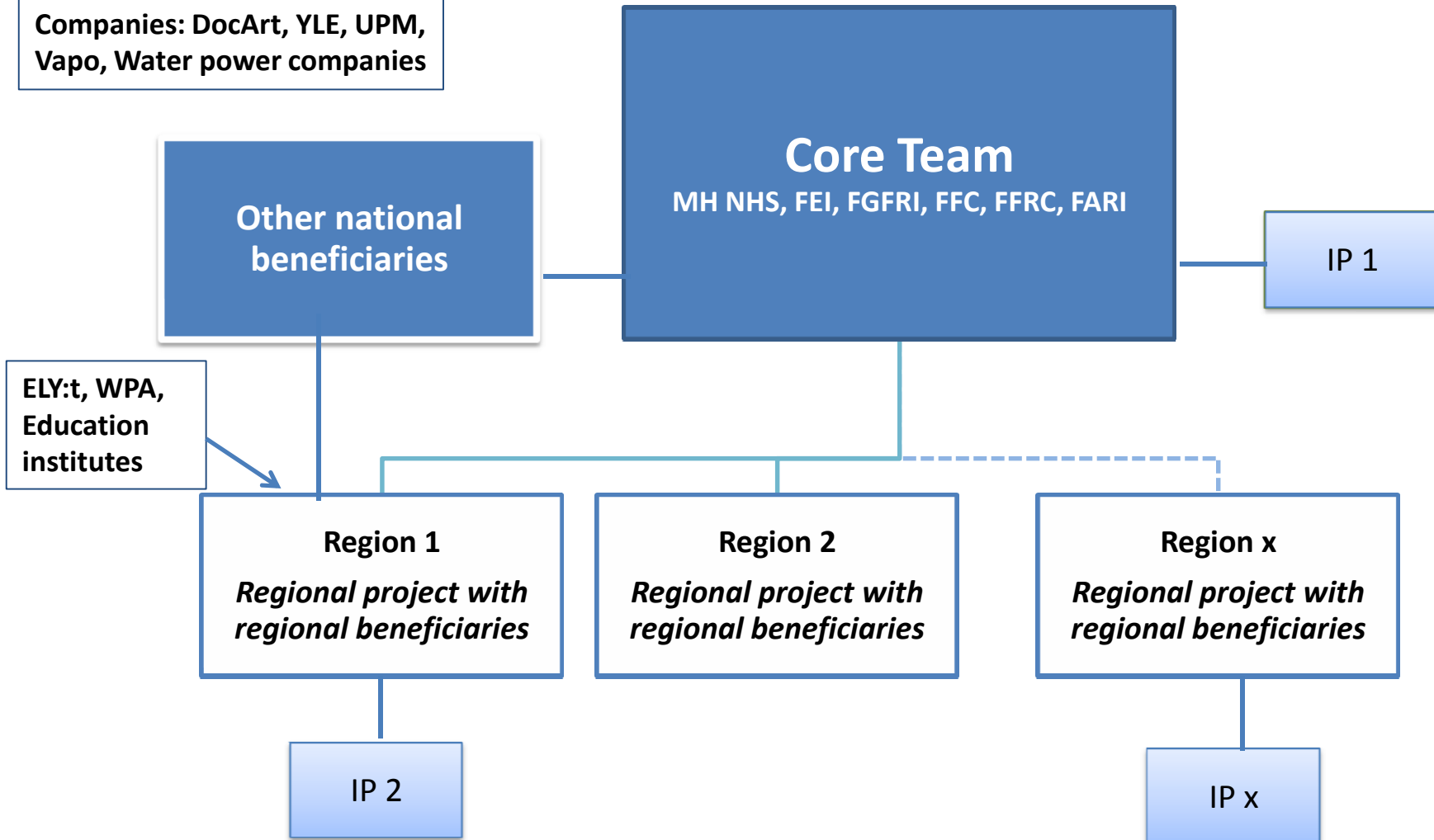


RIISTAN- JA KALANTUTKIMUS



Project beneficiaries and model

FGS, MH Forestry, National Board of Antiquities, Finnish Wildlife Centre
 NGOs: WWF, SLL, NoM, BirdLife
 Companies: DocArt, YLE, UPM, Vapo, Water power companies



METLA



Project objectives

- Harmonising the objectives of Natura 2000 and water protection related directives in principle and practice (habitats, birds, water framework, marine and flood protection)
 - Development of co-operation between sectors
 - Tool: river basin management planning, realisation of actions and follow up of the results
- Improving the conservation status of species and habitats dependent of surfacea and bottom water with multiple objective water catchment area actions on private and state owned lands within and outside Natura 2000 areas
 - Improving water protection on agricultural forestry areas
 - Restoration of small streams, rivers, ponds, spring and (bird)lakes
 - Restoration of water retention capacity; building and restoring wetlands
 - Managing the risk of alien species
 - Species protection actions for at least pearl mussel
- Developing and execution of mapping of fresh water habitats, species and cutlrual values
- Promoting livelihood and entrepreneurial possibilities of rural areas (nature, cultural and health tourism, recreational use and facilities)
- Increasing public awareness, promoting voluntary work possibilities, nature education
- Assessing health and well being benefits of nature (exercise) and promoting related services; by-catch products development
- Promoting Ecoenergy

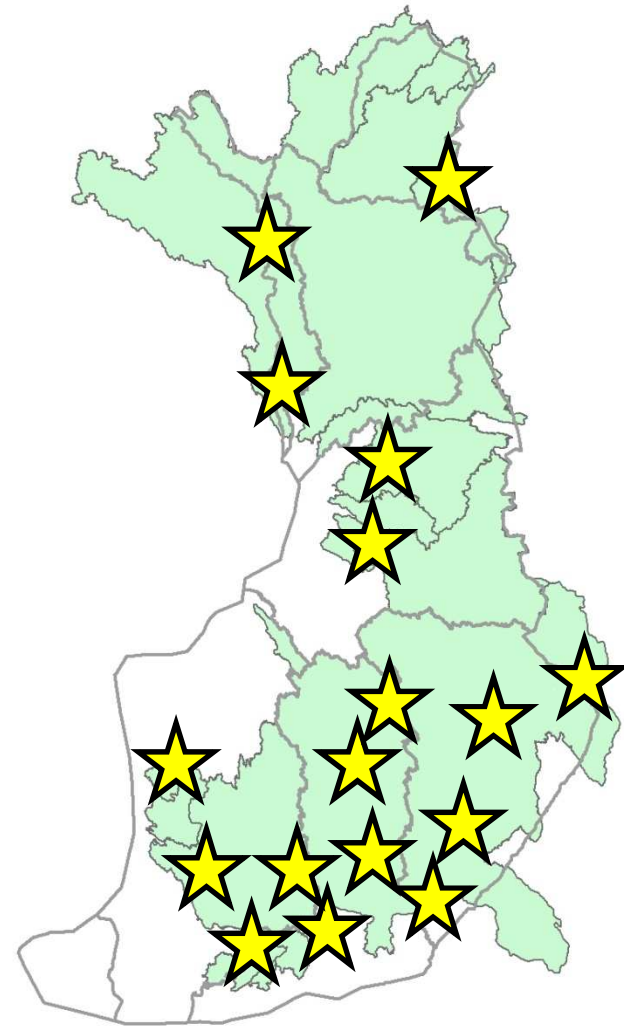
WORK PACKAGES

1. Co-operation networks and joint procedures/ services
2. Mapping, monitoring and related method development
3. Restoration and management actions at water catchment areas
4. Local livelihoods possibilities
5. Project management

Project area nominees

Why:

- All include important N2000 areas
- Actions are linked to N2000 species/habitats directly or indirectly
- Areas linked to national fish policy (migration route) strategy
- Existing ideas and willingness
- Linked tourism and recreational use development (e.g. NPs)
- Joining the objectives of potentially conflicting directives
- Linked to European Ecoenergy



Work package 1: Co-operation networks and joint procedures/ services

1. Development of catchment area based action planning and monitoring systems
2. New reporting systems and joint data base
3. Identification of important ground water areas and guidelines for water usage

Work package 2: Mapping, monitoring and related method development (habitats, key species and cultural values)

4. Collecting of existing data and data management (system)
5. Developing of remote monitoring methods, modelling and monitoring systems and standardisation
6. Developing of remote monitoring methods, modelling and monitoring systems and standardisation + validation remote monitoring systems
7. Developing and testing of ecosystem service assessment and valuation systems for fresh waters; regional tests for policy and action implementation

Work package 3: Restoration and management actions at water catchment areas

8. Increasing the natural values of small upstream waters (e.g. spawnign areas, water protection of forestry)
9. Increasing the natural values and ecosystem performance of build water courses (rivers)
10. Restoration of lakes and shore habitats for improving water and habitat quality and ecosystem performance
11. Solving the conflict between water framework and birds directive and multipurpose restoration of important bird areas
12. Improving the conservation status of pearl mussel (incl. Incubation, reintroduction)
13. Fighting alien invasive species (e.g. European mink and Raccoon Dog)

Work package 4: Local livelihoods possibilities

- Developing of new concepts, networks and livelihood possibilities for (rural) areas and analysing their societal and financial benefits
- Developing of (European) EcoEnergy concept and practical EcoEnergy actions (also testing new financing mechanisms e.g. crowd sourcing)
- Promoting sustainable (nature) tourism and recreational usage possibilities
- New nature education packages for fresh waters and bioeconomical potential
- Promoting voluntary work, civil society and engaging laymen (data collection campaigns)
- Assessing health and well being effects of nature and promoting related services
- Increasing public awareness (documentary with FNBC)

Work package 5: Project management

21. Central management office (program office)
22. Project steering and stakeholder group
23. Management of regional projects
24. Thematical working groups
25. Reporting
26. Integrating integrated projects