



PORTFOLIO

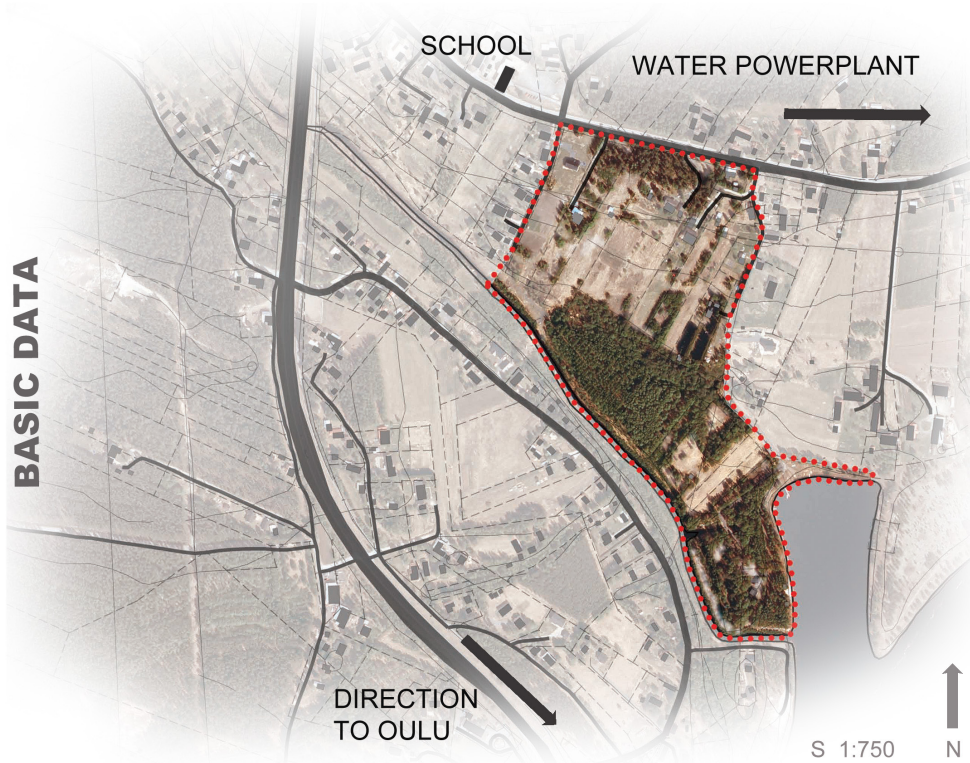
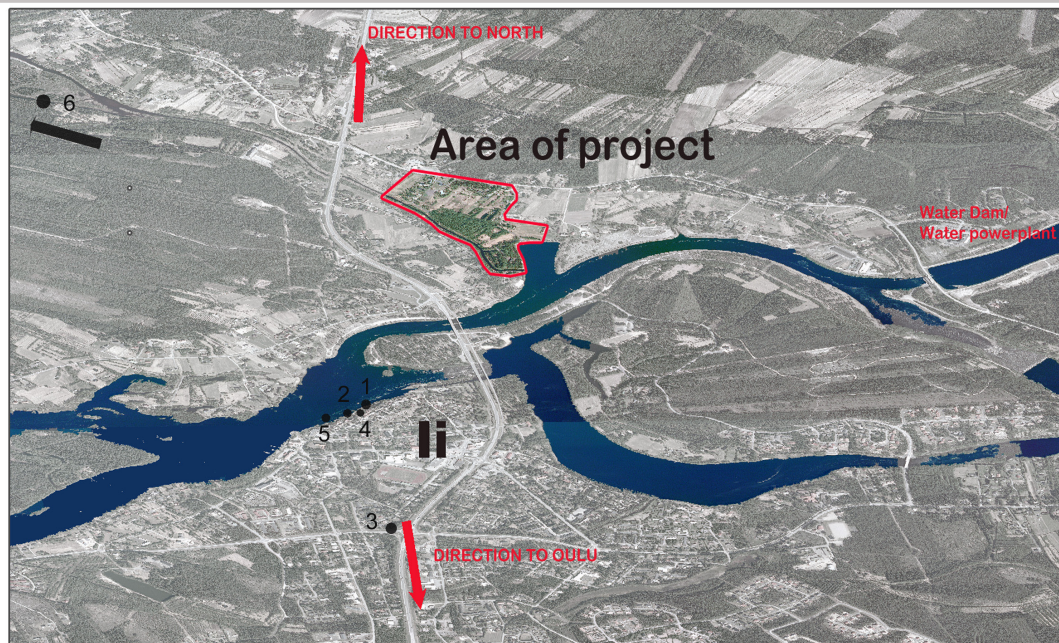
RECREATION ZONE

ZONE FOR ACTIVITIES
IN POHJOIS LI

CONTENT

- BROADER RELATIONS
 - CURRENT STATE
 - SWOT ANALYSIS
 - ACTIVITIES
 - INSPIRATION
 - PARTICIPATION
 - GENERAL PLAN
 - VIZUALIZATION
 - DETAILS
- ESTIMATE MATERIAL
- RESULT

BROADED RELATIONS



Ii

Coordinates: 65° 19'N 25° 22'E
Country: Finland
Region: Northern Ostrobothnia
Total area: 2 809.23 km
Land area: 1 552.54 km
Population (31.1.2014): 9 581 inhabitants (6.17/km)

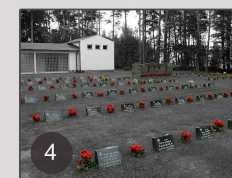
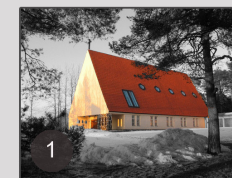
Population by age:

0-14: 23.1 %
15-64: 61.1 %
65 or older: 15.8 %

Distance to:

Oulu - 35 km
Rovaniemi - 170 km
Helsinki - 640 km
Tornio - 94 km
(city in the border with Sweden)

S 1:750 N



- 1 - Church
- 2 - Statue of Iijoki uitolle
- 3 - Memory/ part from powerplant
- 4 - Cemetery
- 5 - National nature reservation
- 6 - Coast of Ii



BASIC DATA

OAMK

UNIVERSITY OF APPLIED SCIENCE

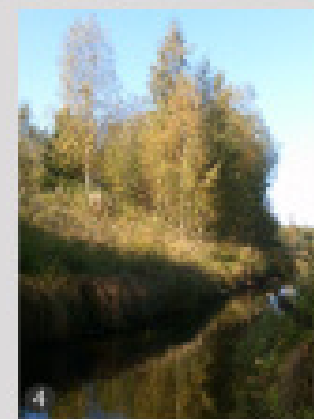
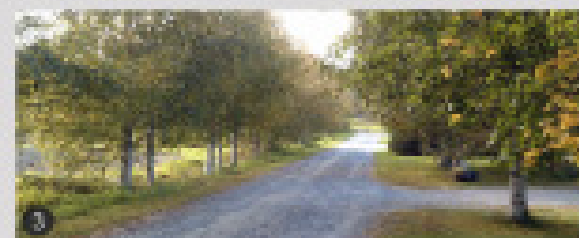
RELAX ZONE IN II, FINLAND

AUTORS: Bc. Pavlína Vlčková, Bc. Jaroslav Dráb



LEGEND

- Buildings
- School
- Historical building
- Footpath
- Road





STRENGTHS

CORNER OF CENTER
EXISTING OF WATER
DIFFERENT SPACES
HISTORICAL BUILDINGS
NEAR FROM SCHOOL

WEAKNESSES

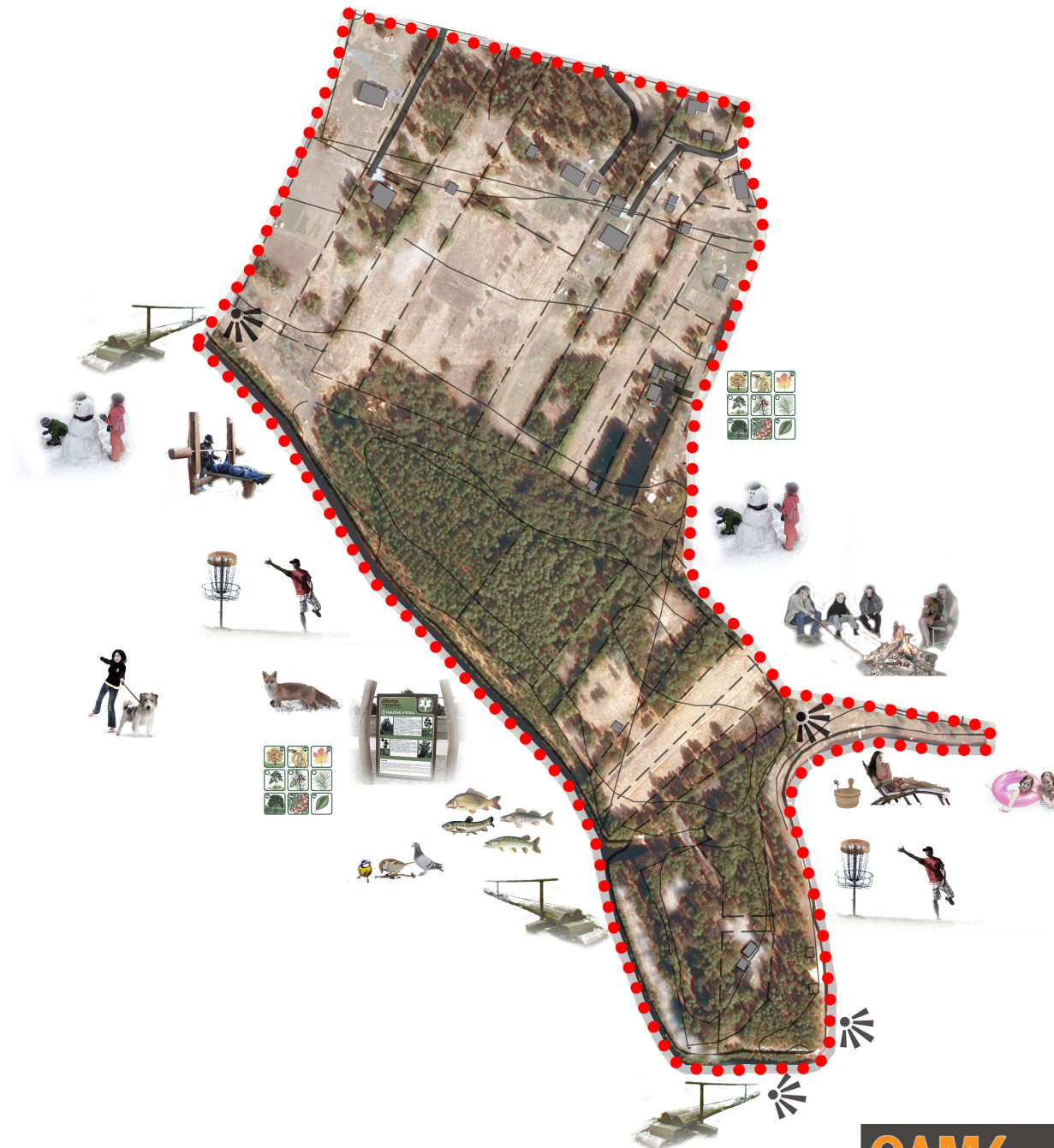
BAD MAINTENANCE
PLACE IS NOT IN CENTER
ABSENCE OF SEATED ELEMENTS
ABSENCE OF VISTAS
ABSENCE OF HARD SURFACES
ABSENCE OF LIGHTS
SHELTER FROM THE RAIN
UNDERUTILIZED AREA

OPPORTUNITIES

- 1.CONECTING WITH OTHER SIDE
- 2.USE OF THE GULF
- 3.CONNECTING WITH NATURE RESERVE
- 4.CREATE A RELAXING AREA
- 5.PLACE OF PEACE
- 6.USE LANDART
- 7.CREATING A NEW ROUTE
- 8.CREATING EDUCATIONAL SPACE
- 9.PLACE FOR PHYSICAL ACTIVITY
- 10 UNUSED SPACE

THREATS

- WASTE
- ABSENCE OF PAVEMENT
- SIDE AFFORESTATION
- INCREASE WATER LEVEL



CHILDREN ACTIVITIES



OUTDOOR GYM



GAMES



WALKS



INFORMATION



EDUCATION TRAILS



EDUCATION TRAILS



FOOTBRIDGES, BRIDGES



SWIMMING



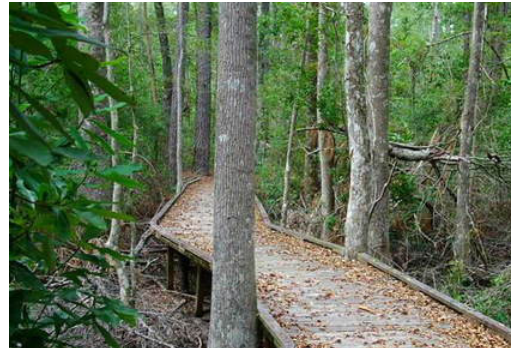
RELAX



FIREPLACE



MUSIC



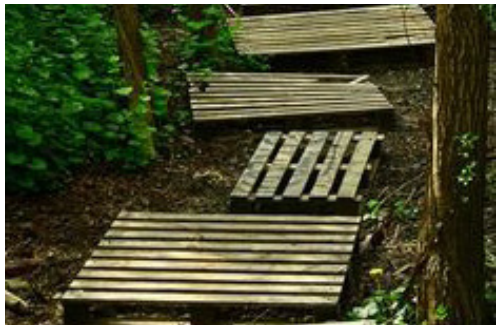
FOOTHBRIDGE



OUTDOOR GYM



EDUCATION TRAIL



PARTICIPATION

QUESTIONNAIRE

1) Your favorite animal? Horse -



Bird -



Sheep -



Goat -



Moose



Others

Bear -



Wolf -



fox -



dog -



reindeer



2) Do you know what is EDUCATIONAL TRAIL? YES x NO

3) Would you like public sauna on beach? YES x NO

4) What is your favorite colors?

5) What is your favorite materials?

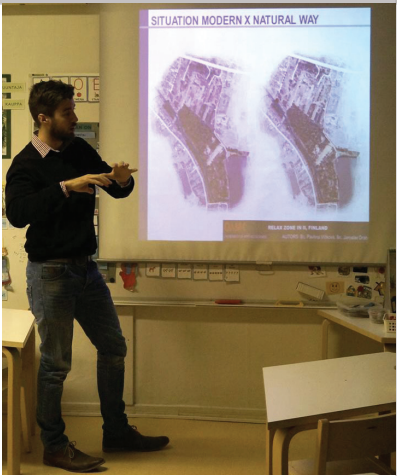
For example: wood, gravel, sand, brick, stone, concrete,

6) Do you want a playground? YES x NO

7) Which kind trees you know?

8) Which country from Europe you know?

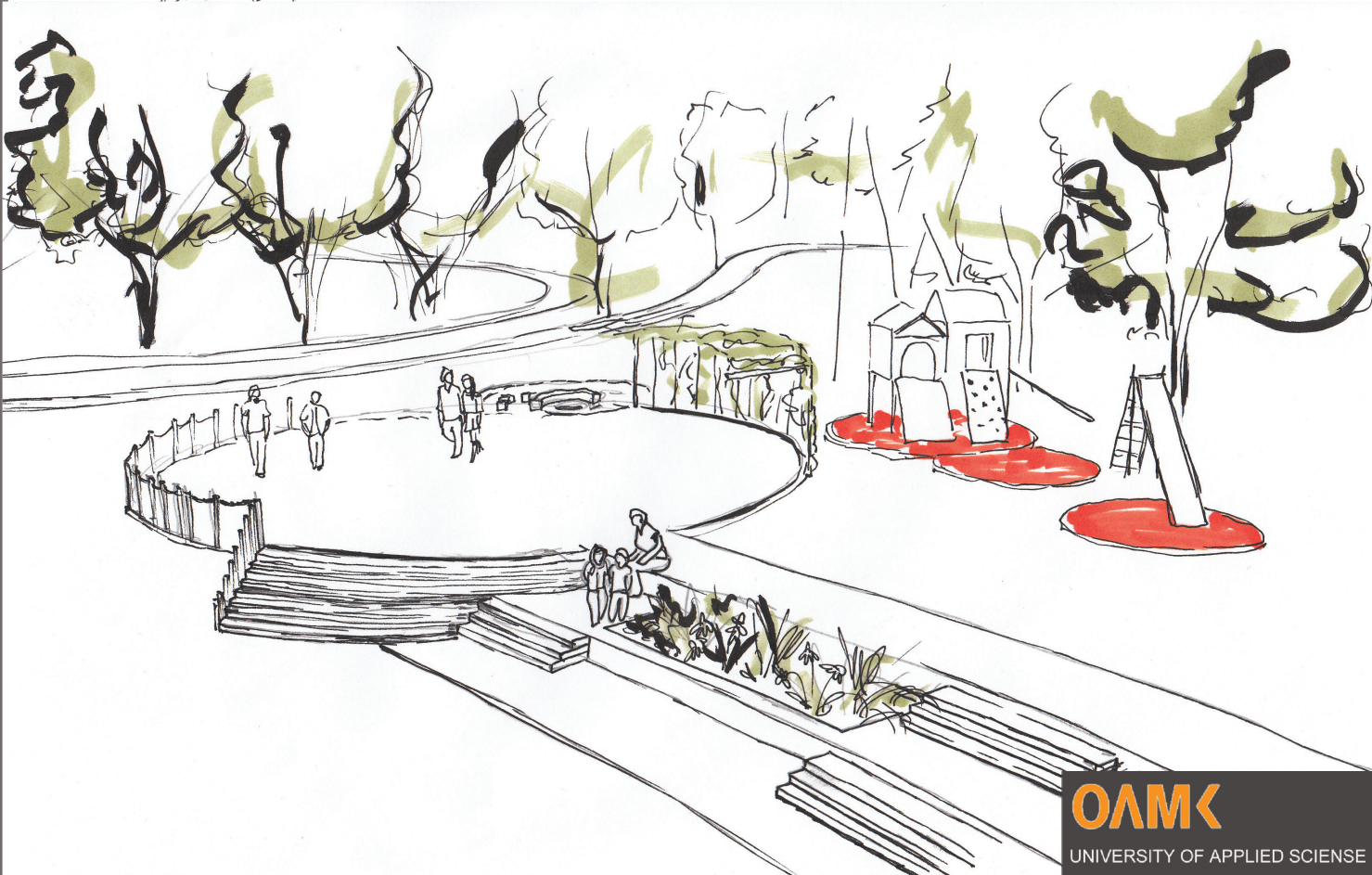
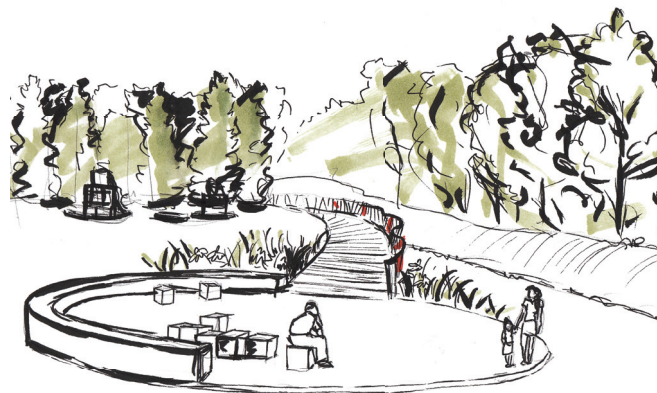
9) What else do you want on this new place



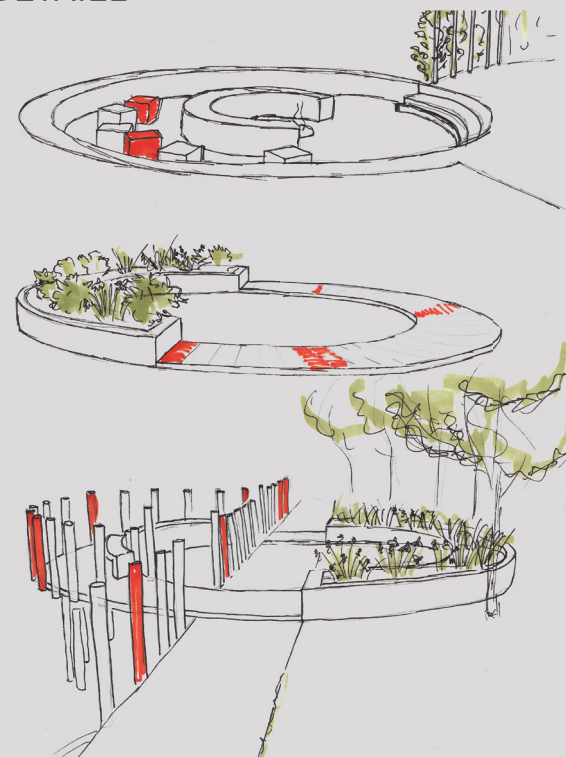
OUR PRESENTATION IN THE SCHOOL FOR CHILDREN AND FOR OWNERS GAVE TO US A LOT OF INFORMATION WHAT THE PEOPLE AND CHILDREN WANT TO HAVE HERE.

WE PRESENTATED OUR BRAINSTORMING AND WE ADD A LOT OF INFORMATION FROM THE QUESTIONNAIRE TO OUR DESING.

BRAINSTORMING - SKETCHES



DETAILS



THIS WERE OUR FIRST BRAIN-
STORMING, OUR FIRST IDEAS.

GENERAL PLAN



LEGEND

- ① MOLE, PLACE FOR PLAYGROUND, FIREPLACE
- ② RELAX CIRCLES, EDUCATION PLACE/ OUTDOOR CLASSROOM
- ③ PLAYGROUND, ELEMENTS FOR SENIORS, TEENAGERS AND CHILD
- ④ CROSSING POINT WITH BRIDGE, EDUCATION POINT
- ⑤ RELAX CIRCLE, EDUCATION POINT,
- ⑥ ENTERTAINMENT TRAIL
- ⑦ OUTDOOR CLASSROOM/ RELAX PLACE, EDUCATION POINT
- ⑧ RELAX PLACE WITH BANCHES
- ⑨ SECRET PLACE FOR RELAX

THE LENGTH OF THE SIDEWALK: 1 100 M

— BOUNDARY OF AREA

THE GENEREAL PLAN IS SHOWING TO US WHERE WILL BE THE MAIN LINE OVER THE AREA. WHERE WILL BE THE EDUCATION POINTS AND WHERE WILL BE THE BRIDGES. THE MAIN THING MUST BE IDEA, CONNECT TWO SITES AROUND THIS AREA. THE BRIDGES ARE IN THE UPPER PART OF THE MAP AND IN THE DOWNER PART IN THE MAP. NEAR THE GULF WE DESIGNED A MOLE, FOR RELAXING, BARBEQUE A SOME GAMES FOR CHILDRENS, TEENAGERS AND SENIORS. OVER THE FORST, NEAR SIDEWALK IS GOING „FUNNY“ PATH.



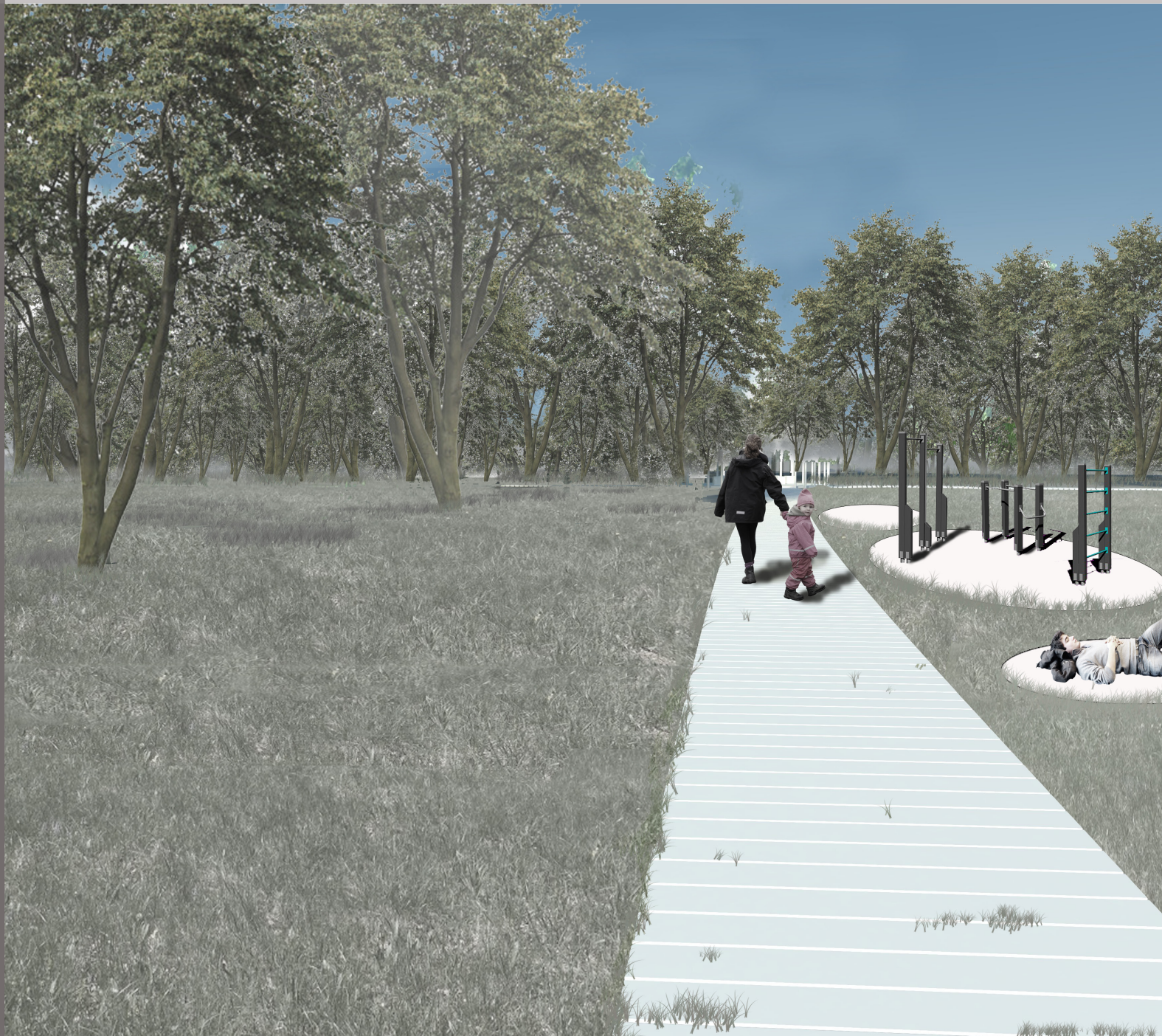
A VIEW IN THE FOREST.

THIS VIZUALIZATION IS SHOWING TO US HOW WILL LOOK THE SIDEWALK IN THW FOREST. HOW WILL LOOK THE STRUCTURE IN THE AREA.



THIS IS ONE OF THE CONNECTING PLACE IN OUR AREA.

RIGHT THIS IS BRIDGE FROM THE „BEACH“ TO OUR PROJECTED AREA. HOW YOU CAN SEE, IT IS VERY SIMILAR WITH THE TYPICAL FISHING MOLE.



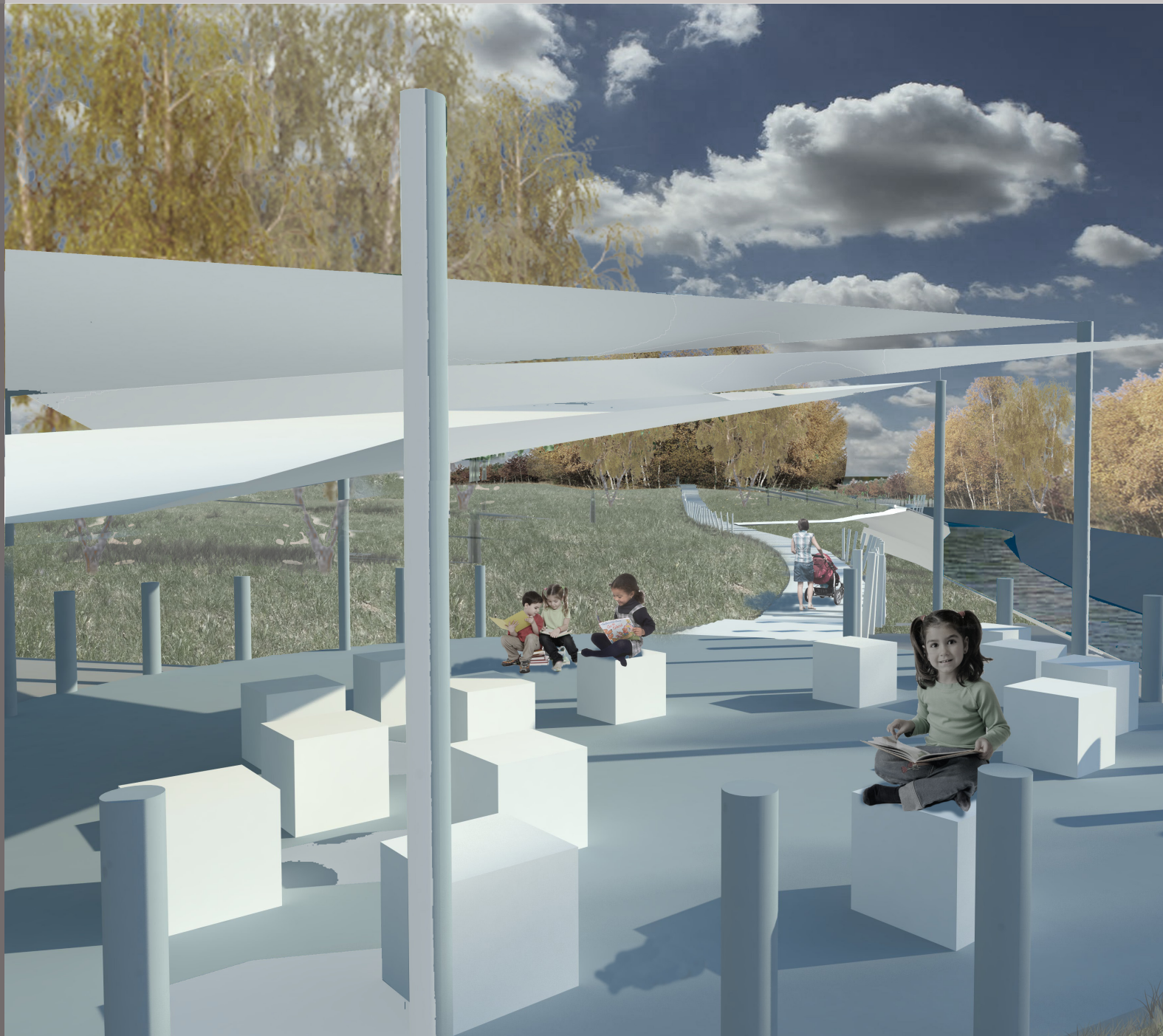
THIS VIEW IS FROM THE MIDDLE OF OUR AREA. AFTER CUTTING THE SMALL TREES THE AREA WILL BE CLEARLY. THE GRASS MUST CUTT BECAUSE IT MUST BE USEFULL. NEAR THE SIDEWALK ARE SOME POINTS WITH SOME STRUCTURES/ CONSTRUCTIONS FOR OUTDOOR GYM AND PLAYG-ROUNDS.

VIZUALIZATION



THIS PICTURE IS SHOWING TO US, HOW CAN THE MOLE LOOK LIKE. A LITTLE BIT MODERN STYLE WITH SOME PLACES FOR RELAX, FOR BARBECUIU AND REST. THE BEST PLACE FOR SHOWING THE LIFE AROUND THE RIVER.





THIS PICTURE FROM THE OUT-
DOOR CLASSROOM. I WILL BE
WITH TEXTILE ROOF SO THE CHI-
LDREN CAN IT USE EVERYTIME IN
SUMMER.

VIZUALIZATION



THIS PICTURE IS SHOWING TO US HOW CAN LOOK LIKE THE RELAX PLACE IN THE FOREST, THERE WILL BE USE ONLY WOOD, SO EVERYTHING WILL LOOK LIKE VERY NATURAL.

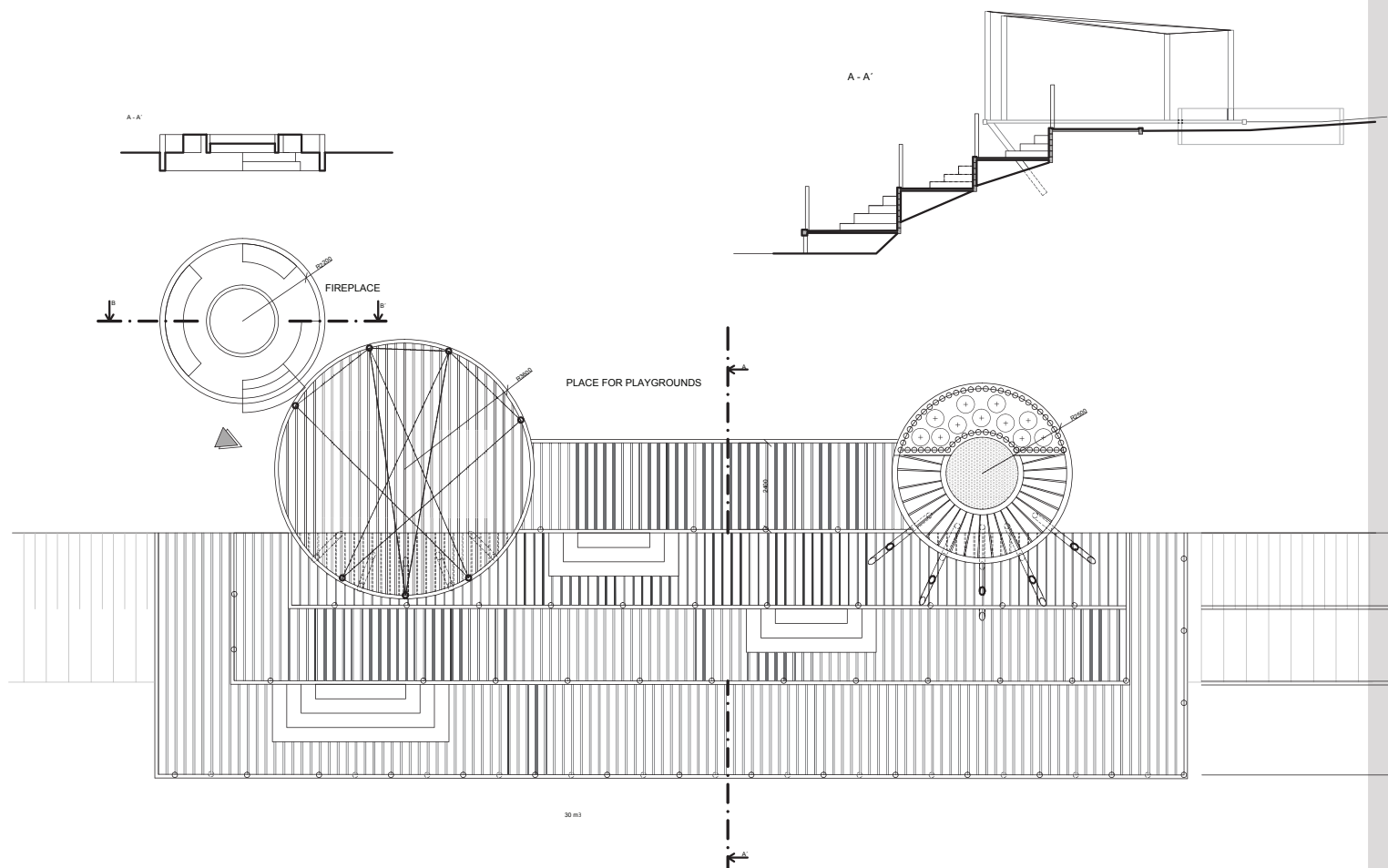
AROUND THE CIRCLE WILL BE SOME INFORMATION TABLES ABOUT THE NATURE AND LAND AROUND POHJOIS II.



THIS IS DETAIL FROM THE BRIDGE. THIS IS DETAIL WHICH CAN BE INSTALLED FOR THE PROTECTED IN FRONT OF THE MOTORCYCLE RIDERS, BUT THERE CAN STILL GO WOMEN WITH STROLLERS AND PEOPLE WITH BICYCLES.

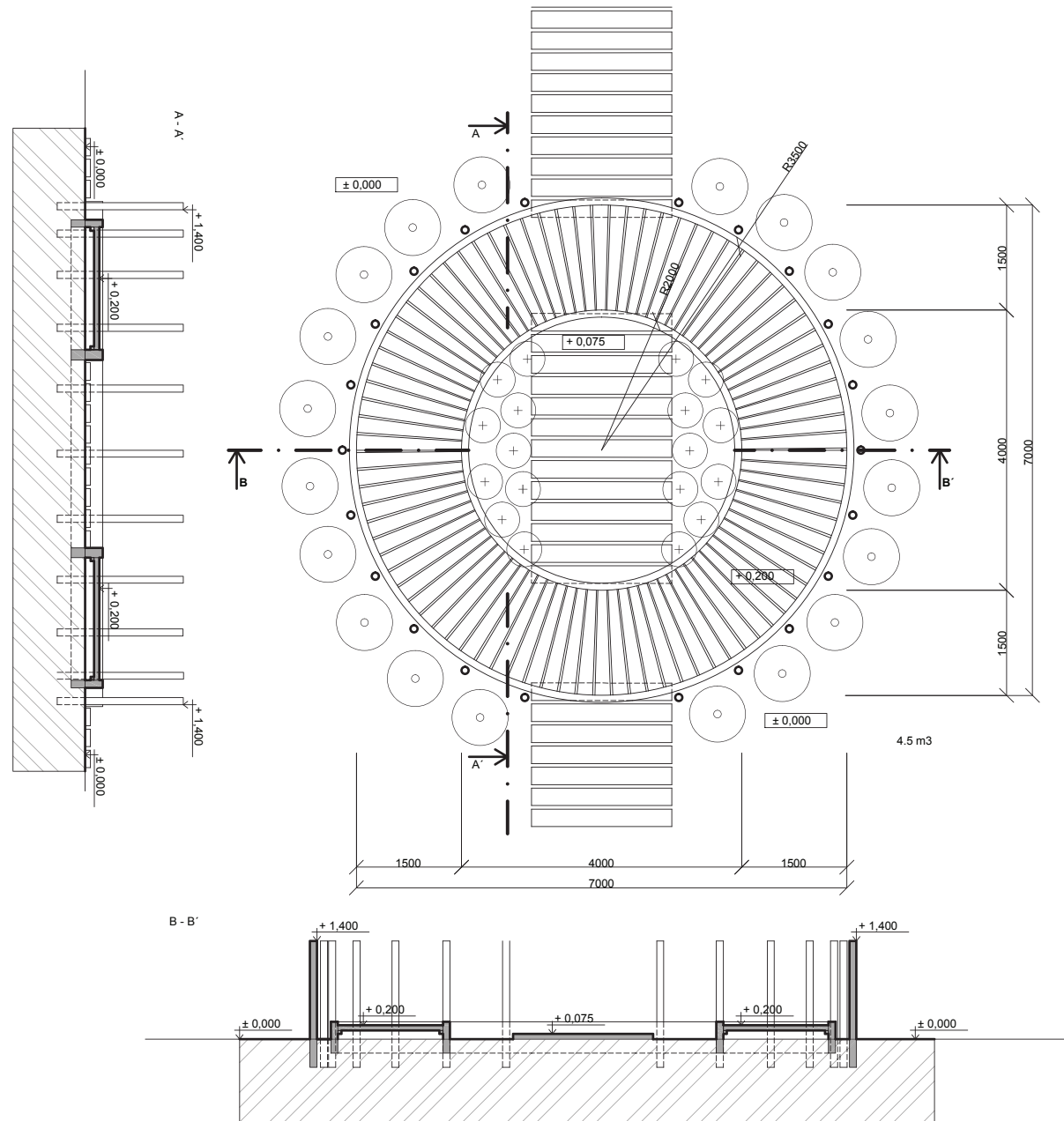
ZONE IN II, FINLAND

AUTORS: Bc. Pavlína Vlčková, Bc. Jaroslav Dráb



MOLE

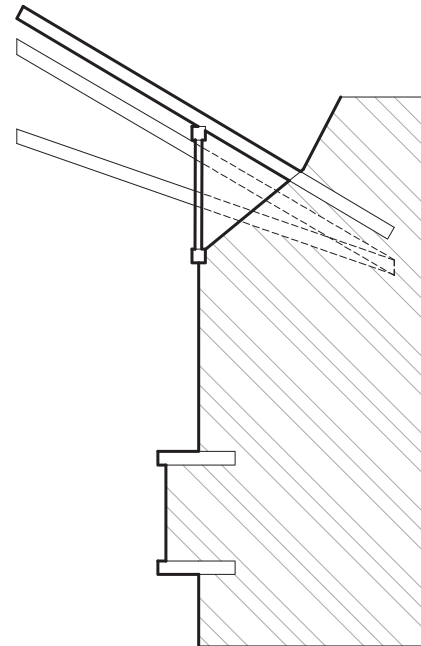
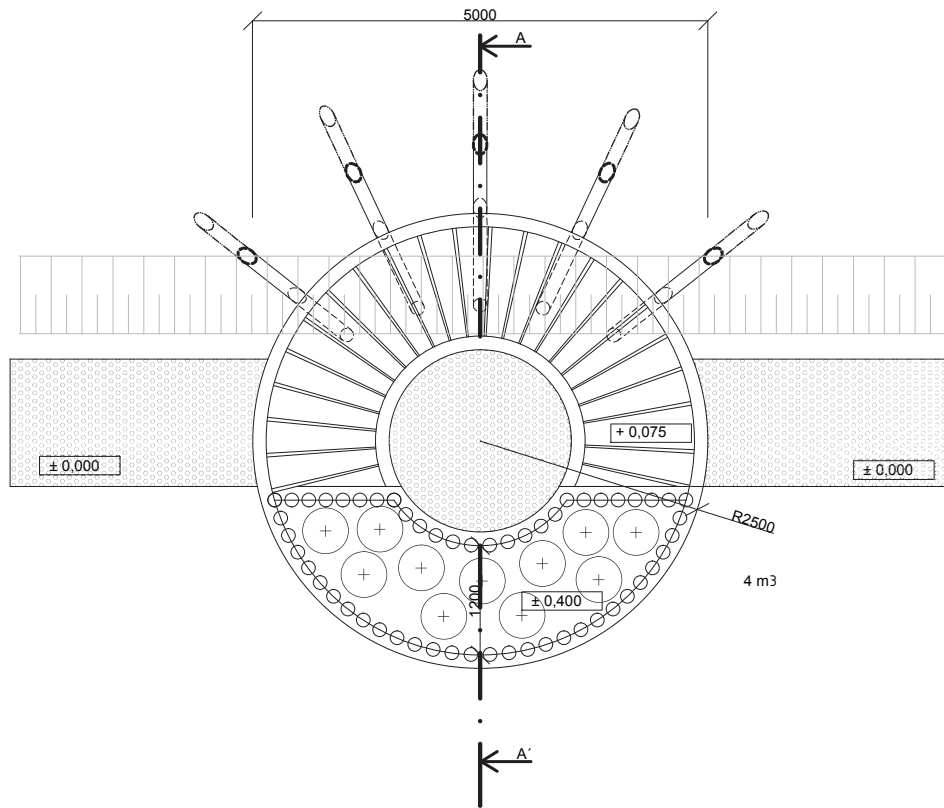
THE MOLE IS CONSTRUCTION FOR THE BETTER USING THE GULF. THERE ARE A LOT OF SPACE AND WE DESIGNED THERE CONSTRUCTION WHERE CAN PEOPLE SAVE IN FRONT OF RAIN, THEY CAN SIT THERE AND NEAR THE MOLE WILL BE FIREPLACE AND PLAYGROUND WITH SOME STRUCTURE FOR WORKOUT FOR SENIORS. THE MOLE IS COMPLETE FROM WOOD, IT IS WORK FOR A WOOD-CARVER. ONLY THE ROOF IS FROM SOME PLASTIC TEXTILE WHICH CAN SAVE EVERYONE IN FRONT THE RAIN AND SNOW OF COURSE.



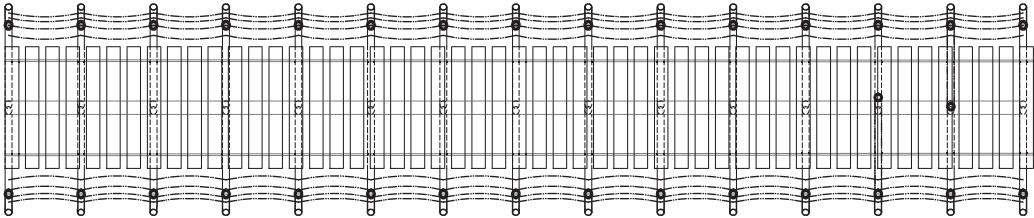
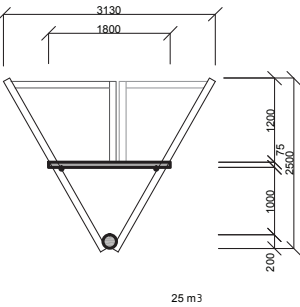
RECREATION PLACE

IN THIS PLACE WILL BE SMALL HOLE FOR THE PLANTS AND ORNAMENTAL GRASSES. OVER THE HOLE WILL GO THE SIDEWALK. EVERYTHING IS AGAIN FROM THE WOOD AND IT MUST BE AGAIN 10CM OVER THE GROUND. MAYBE IS THERE OTHERS OPTIONS, MAYBE USE THE GRAVEL, BUT IT WILL LOST THE MAIN IDEA.

AROUND THE CIRCLE WILL BE SOME INFORMATION TABLE WITH INFORMATION ABOUT THIS AREA AND ABOUT POHJOIS II. 4,5 M^3

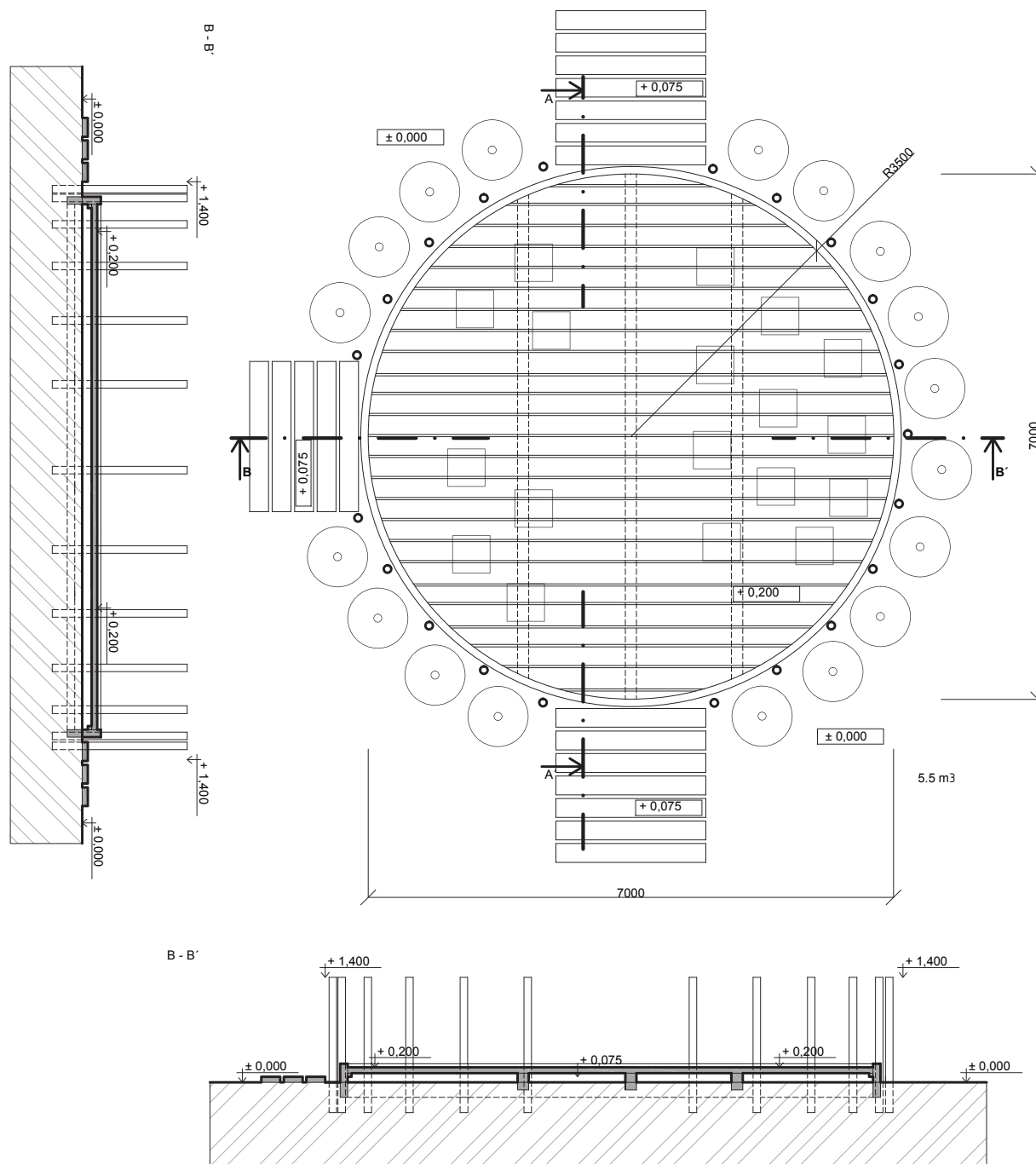


THE RECREATION CIRCLE
 IT IS A STRUCTURE/ CONSTRUCTION WHICH IS WHOLE FROM THE WOOD. A COUPLE PART OF THIS CONSTRUCTION IS IN THE AIR, SOMETHING AROUND 1 M OVER THE GROUND. IT IS FIXED WITH ORIGINAL CONSTRUCTION FROM BIG WOODEN COLUMN. IT MUST BE CONSULATE WITH WOOD-CARVER. IN THE BACK SITE OF THIS CONSTRUCTION IS ELEVATED FLOVERBATH, BUT IT WILL BE MAKE FROM WOOD TOO. THERE WILL BE SOME ORNAMENTAL GRASS..
 ON THIS CONSTRUCTION WILL BE SOME BENCHES FOR THE REST AND RELAXING. 4 m³



BRIDGE

THE BRIDGE IS DESIGNED ON THE BASIS OF THE TRADITIONAL SHAPES OF MOLES WITH THE NETWORKS. A WOODEN WALKWAY WITH WIDTH OF 1.8 M AND A RAILING AT A HEIGHT OF 1.2 M. IT'S SUPPOSED TO SYMBOLIZE THE TRADITIONAL CRAFT OF THIS PART OF THE VILLAGE AND FINLAND AND PART OF THE CARVING, FISHING AND SHIPBUILDING.



THE RECREATION PLACE WITH
OUTDOOR CLASSROOM

THIS WHOLE CONSTRUCTION WILL
BE ONLY FROM WOOD. IT MUST
BE 10CM OVER THE GROUND,
FOR THE PROTECTED IN FRONT
THE WET FROM THE GROUND.
AROUND THIS CIRCLE WILL BE
SOME EDUCATION BLACKBOARD
FOR THE EDUCATION INFOR-
MATION, ABOUT THE NATURE,
FLOWERS, TREES. SOMETHING
ABOUT FINLAND AND EUROPE.
THE SMALL CIRCLES AROUND
THIS CONSTRUCTIONS ARE THE
SMALL BUSHES SWIDA. 5,5 m³

RESULT

OUR MAIN GOAL WAS DESIGNED AREA FOR THE LOCAL PEOPLE, BUT OF COURSE NICE AREA FOR THE VISITOR FROM SOMEWHERE ELSE. THESE AREA HAS STILL SOME CHARM AND GENIUS LOCI. WE DO NOT WANT CHANGE THIS MAGIC OF PLACE. WE TRIED TO MAINTAIN NATURAL CHARACTERS OF THIS PLACES, BUT WE BRING SOME NEW AND MODERN ELEMENTS. WE WAS IN VILLAGE AND WE TALK WITH PEOPLE AND OUR PROJECT RESPONDS TO COMMENTS FROM LOCAL PEOPLE. OUR MAIN GOAL WAS TO GET THE KIDS FROM SCHOOL INTO LANDSCAPE AND LEARN TO PERCEIVE AND RECOGNIZE FOR EXAMPLE TREES. OUR AREA IS BORDERED TO THE LOCAL ELEMENTARY SCHOOL AND THIS IS REASON WHY WE WANT TO DO THIS NICE FOR CHILD. WE CREATE ON OUR AREA EDUCATIONAL TRAIL WITH DIFFERENT PATHWAY, WITH INFORMATION BOARDS AND OUTDOOR GYM AND OUTDOOR CLASS. ON THIS AREA IS CREATE SOME SPECIAL PLACE WHICH WILL SERVE AS OUTDOOR CLASSROOM. ON THIS PLACE IS A SPECIAL ROOF AGAINST THE RAIN, SEATS THAT CAN BE FREELY MOVED AND ARE LOCATED ON QUIET BEAUTIFUL PLACES. IN THE BAY IS TO CREATE A PLACE FOR RELAXATION AND COMFORT WHERE YOU CAN LOCAL RESIDENTS AS WELL AS VISITORS SIT AND TO GRILL SAUSAGE. THIS PLACE SHOULD SERVE AS A BACKGROUND FOR WINTER FISHING AND WINTER SWIMMING IN THE BAY. NEXT MAIN IDEA OF THIS PROJECT IS CONNECTING WITH THE OTHER SIDE. WE FOUND THAT IT IS VERY IMPORTANT FOR RESIDENTIAL PEOPLE, BECAUSE WHEN CHILD WANT GO TO SCHOOL THEY HAVE TO RIDE ALONG THE RIVER TO THE MAIN BRIDGE. AND WE THINK THAT FOR BETTER NEIGHBORLY RELATIONS IT IS BETTER WHEN YOU CAN GO RIGHT OVER THE STREAM AND NOT TO GO BY LONGER WAY. THIS IS REASON WHY WE CREATE ON THIS PLACE SOME OUR DESIGN, PROJECT WILL MAKE THIS PLACE MORE BEAUTY, MORE CLEARLY AND WE HOPE THAT IT CAN BE SOMETHING FOR WHAT CAN BE THE LOCAL PEOPLE FROM PHOTOS II PROUD

