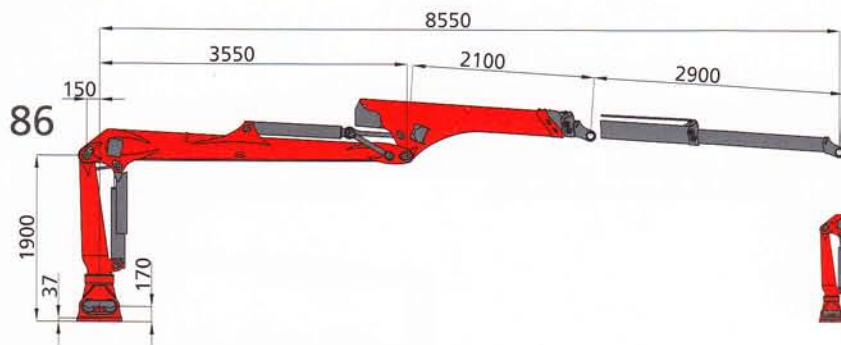
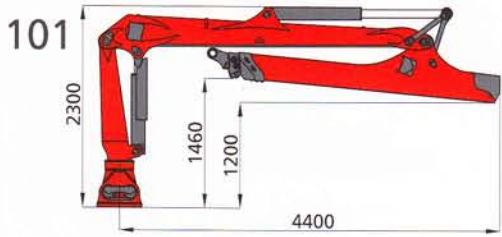


FORWARDER CRANES

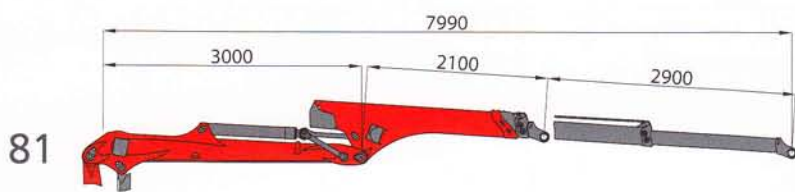
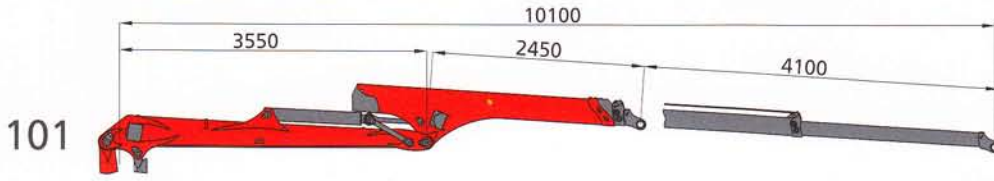
M-CLASS / S-CLASS



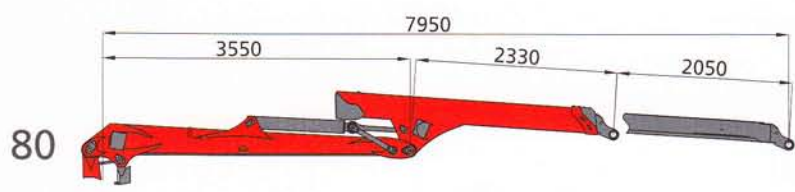
M70F86	2280	1700	1350	1100	930	800 kg
M80F86	2620	1960	1550	1280	1080	930 kg
S100F86	3010	2250	1780	1480	1250	1080 kg
S110F86	3470	2590	2060	1700	1440	1200 kg
	3	4	5	6	7	8 m



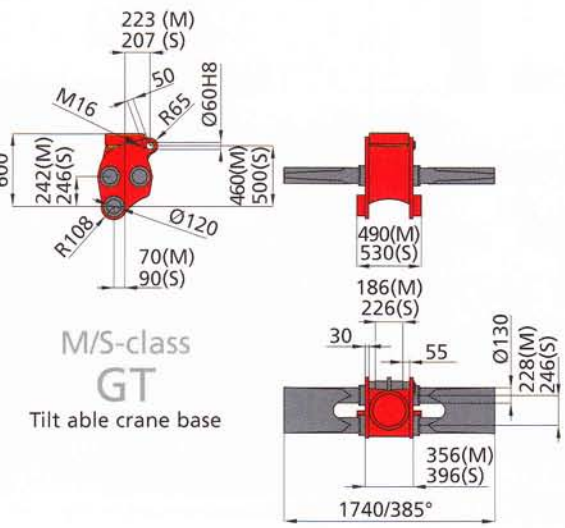
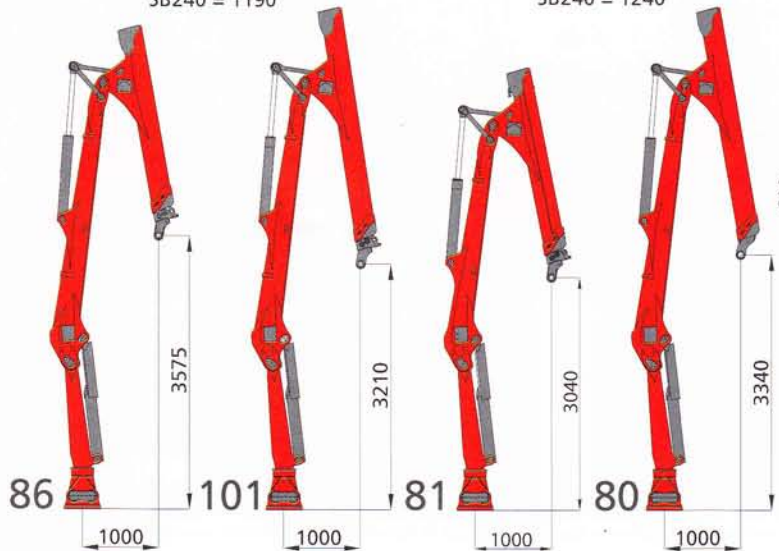
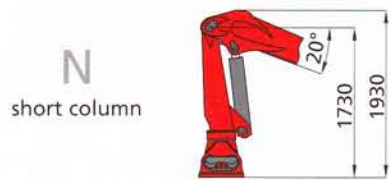
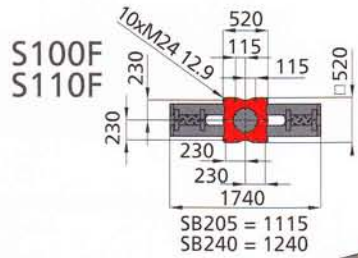
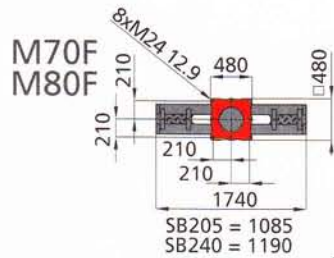
M70F101	2160	1610	1280	1070	890	760	660	540 kg
M80F101	2510	1880	1500	1240	1040	890	780	660 kg
S100F101	2860	2140	1710	1420	1190	1030	900	770 kg
S110F101	3330	2490	1980	1640	1380	1190	1030	900 kg
	3	4	5	6	7	8	9	10 m



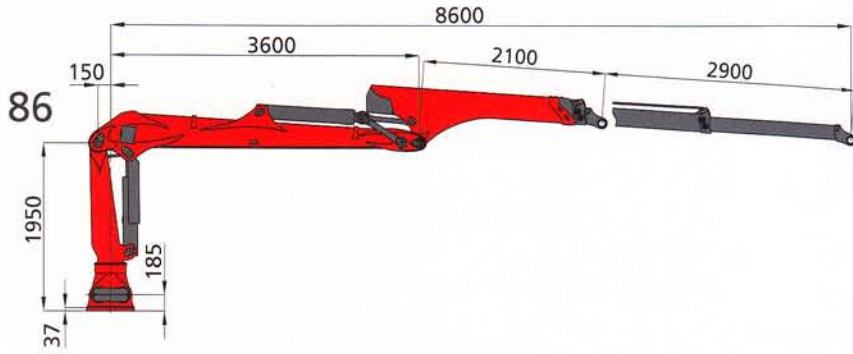
M70F81	2380	1770	1400	1150	980 kg
M80F81	2730	2040	1620	1330	1130 kg
	3	4	5	6	7 m



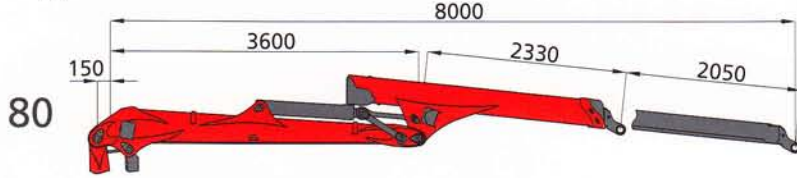
M70F80	2270	1690	1340	1120	950 kg
M80F80	2620	1960	1560	1300	1100 kg
S100F80	3020	2260	1810	1510	1280 kg
S110F80	3460	2600	2080	1740	1480 kg
	3	4	5	6	7 m



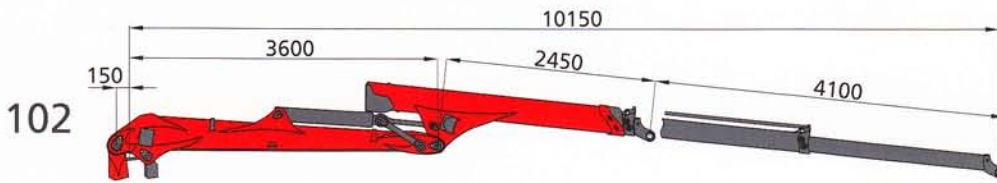
FORWARDER CRANES X-CLASS



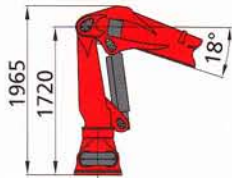
X120F86	3650	2730	2170	1790	1520	1320 kg
X140F86	4060	3040	2420	2000	1700	1480 kg
	3	4	5	6	7	8m



X120F80	3700	2770	2210	1840	1570	1360 kg
X140F80	4110	3090	2470	2050	1750	1520 kg
	3	4	5	6	7	8m

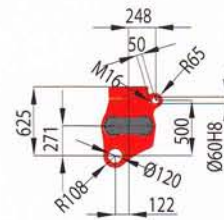
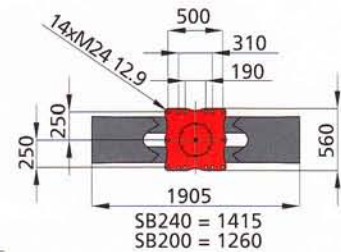


X120F102	3550	2650	2100	1740	1460	1260 kg		
X140F102	3950	2960	2350	1940	1640	1420 kg		
	3	4	5	6	7	8	9	10m



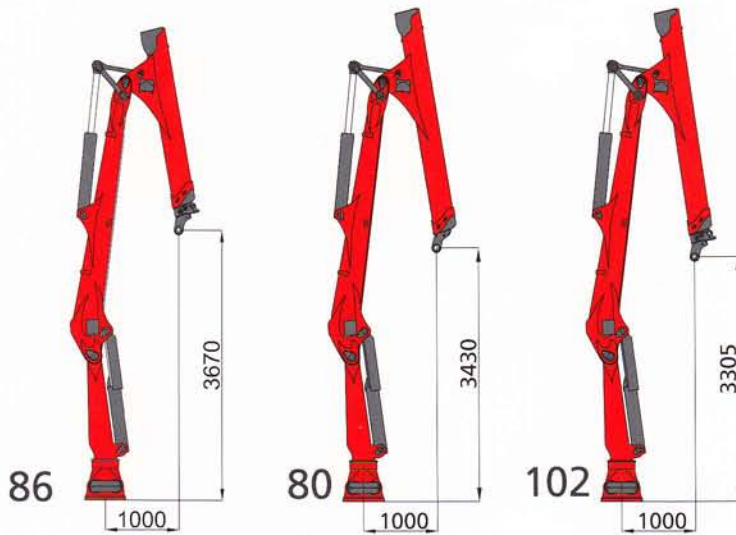
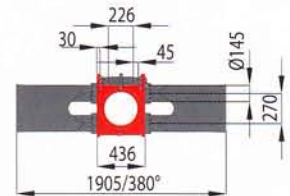
N
short column

X120F
X140F



X-class
GT

Tilt able crane base



crane type	M-class								S-class						X-class					
	M70F				M80F				S100F			S110F			X120F			X140F		
boom system	80	81	86	101	80	81	86	101	80	86	101	80	86	101	80	86	102	80	86	102
lifting moment [kNm]	102								128						143					
lifting moment net [kNm]	68	71	68	65	79	82	79	75	91	90	86	104	100	111	110	107	123	122	119	
max. outreach [m]	8,0	8,0	8,6	10,1	8,0	8,0	8,6	10,1	8,0	8,6	10,1	8,0	8,6	10,1	8,0	8,6	10,2	8,0	8,6	10,2
slewing torque net [kNm]	26				29				33			36			40			43		
slewing torque [kNm]	31				35				40			44			45			49		
slewing angle [°]	385								385						380					
dead weight without link / rotator [kg]	1590	1590	1650	1730	1620	1620	1680	1760	1750	1800	1890	1780	1830	1920	2090	2140	2220	2120	2170	2250
operating pressure [bar]	215				240				215			240			230			250		
recommended pump capacity [l/min]	130 LS				130 LS				150 LS			150 LS			150 LS			150 LS		
rotator (Indexator)	G121								G141						G141					

Weight of standard crane, incl. oil, spot lights and cylinder protection, without link and rotator; material tolerance +/- 5%; lifted weight, net without accessories