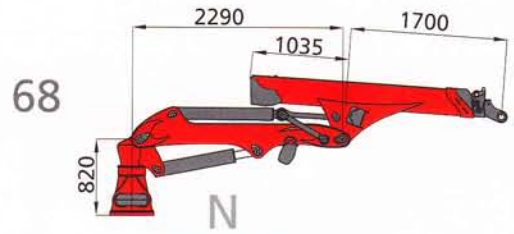
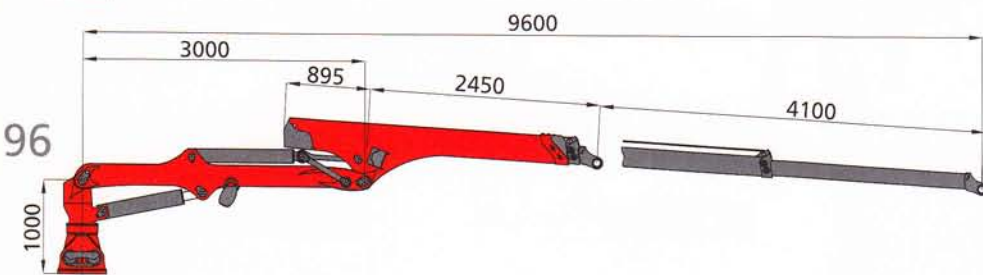
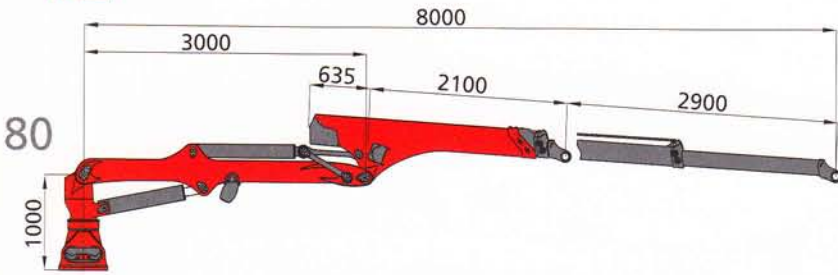
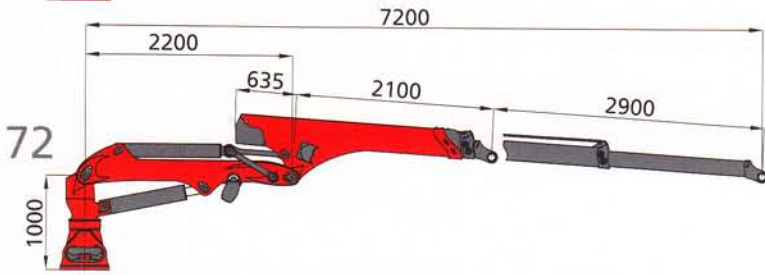
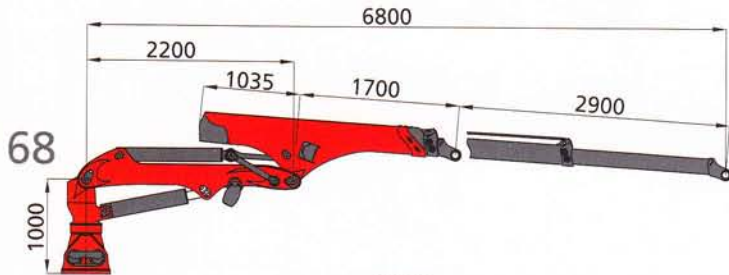
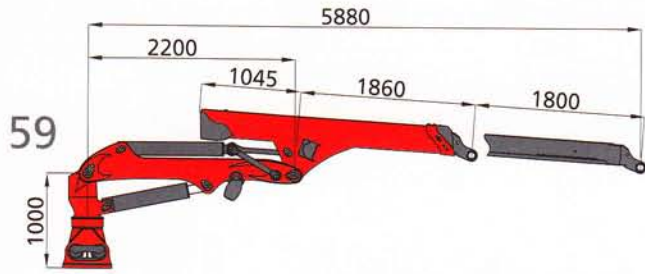
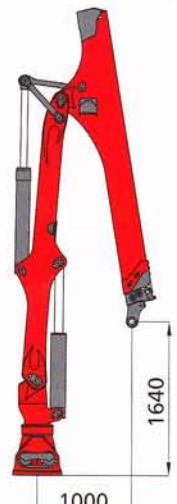
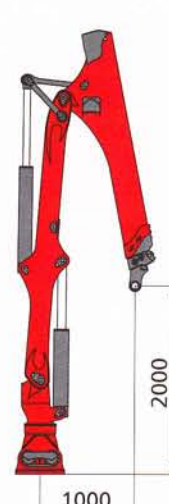
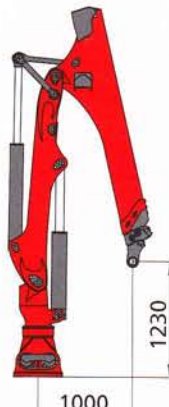
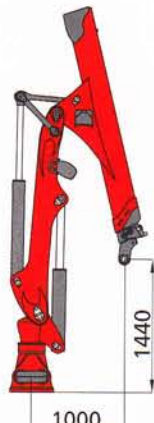
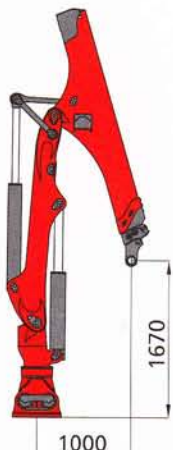
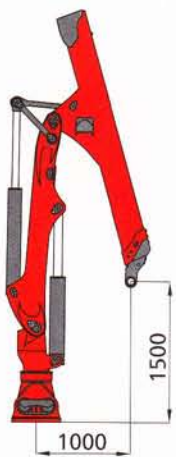
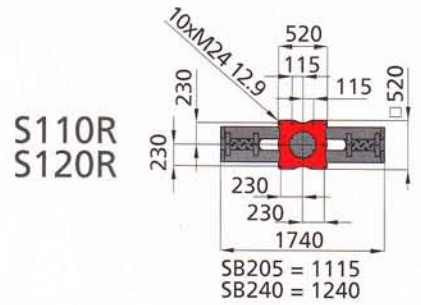
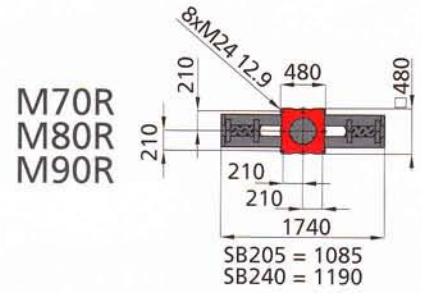


# SKIDDER CRANES

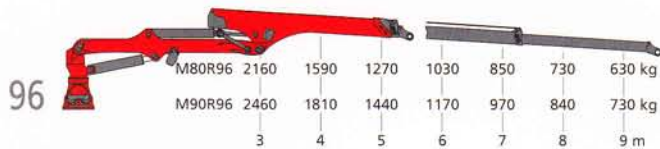
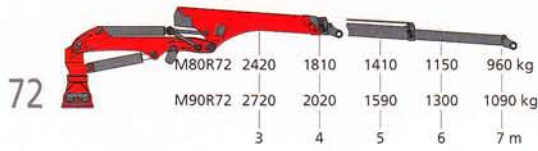
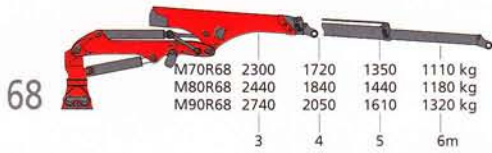
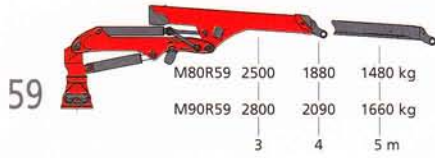
## M-CLASS / S-CLASS



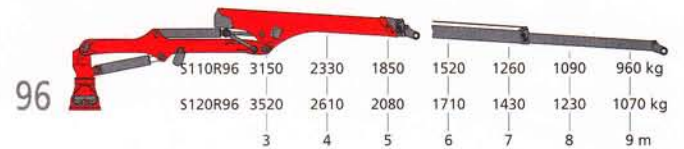
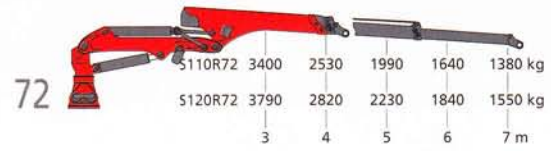
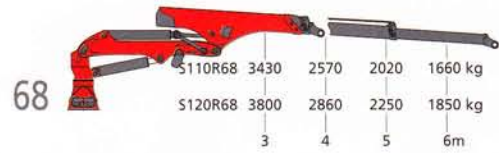
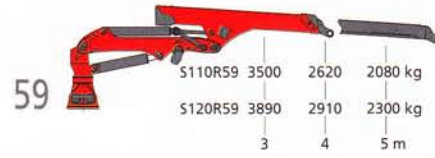
short column  
(only for M70R68)



**M-CLASS**



**S-CLASS**



crane type	M-class										S-class											
	M70R		M80R				M90R				S110R				S120R							
boom system	68	59	68	72	80	96	59	68	72	80	96	59	68	72	80	96	59	68	72	80	96	
lifting moment [kNm]	90		95				104				126				139							
lifting moment net [kNm]	69	75	73	68	65	84	82	76	74	105	103	102	97	95	117	114	108	106				
max. outreach [m]	6,8	5,9	6,8	7,2	8,0	9,6	5,9	6,8	7,2	8,0	9,6	5,9	6,8	7,2	8,0	9,6	5,9	6,8	7,2	8,0	9,6	
slewing torque net [kNm]	25		26				29				33				36							
slewing angle [°]	385																					
dead weight without link / rotator [kg]	1430	1330	1450	1490	1620	1360	1480	1520	1650	1490	1580	1630	1730	1520	1610	1660	1760					
operating pressure [bar]	190		200				220				205				225							
recommended pump capacity [l/min]	130 LS										150 LS											
rotator (Indexator)	G121		G141										G141									

Weight of standard crane, incl. oil, spot lights and cylinder protection, without link and rotator; material tolerance +/- 5%; lifted weight, net without accessories