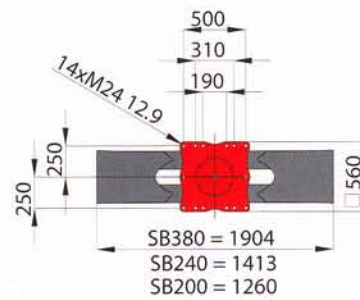
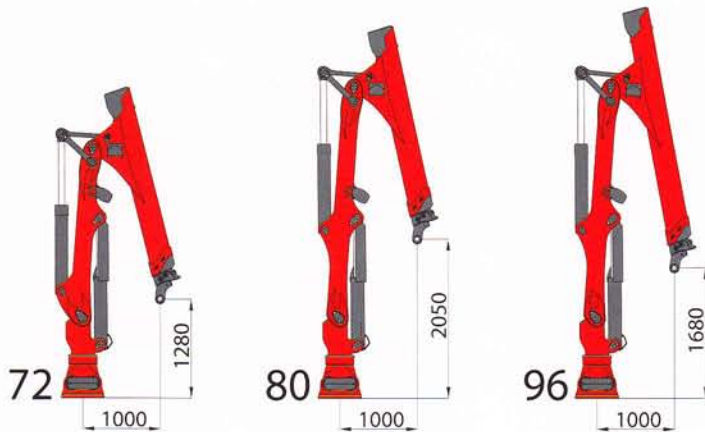
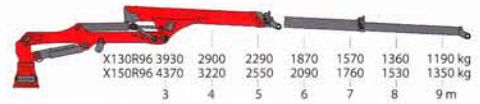
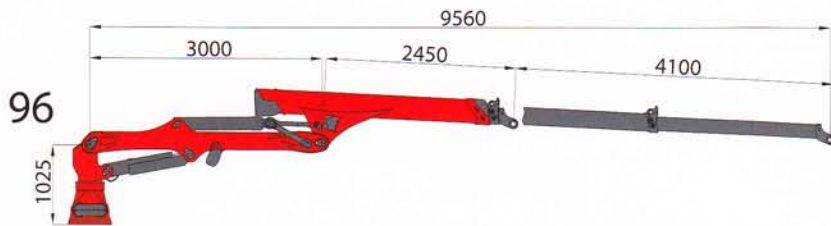
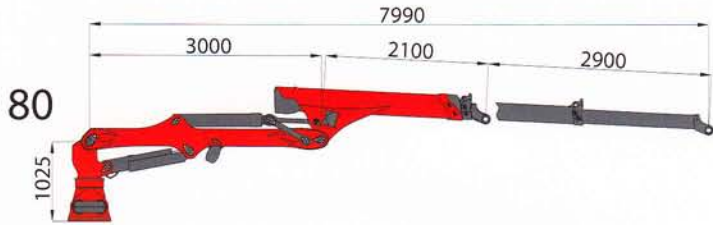
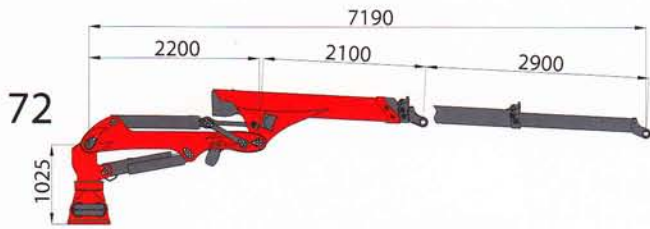


SKIDDER CRANES

X-CLASS



crane type		X130R			X150R		
		72	80	96	72	80	96
boom system							
lifting moment	[kNm]	156			170		
lifting moment net	[kNm]	127	120	118	140	134	131
max. outreach	[m]	7,2	8,0	9,6	7,2	8,0	9,6
slewing torque	[kNm]	57			62		
slewing torque net	[kNm]	47			52		
slewing angle	[°]	380					
dead weight without link / rotator	[kg]	1940	2020	2110	1970	2050	2140
operating pressure	[bar]	220			240		
recommended pump capacity	[l/min]	150 LS					
rotator (Indexator)		G141					

Weight of standard crane, incl. oil, spot lights and cylinder protection, without link and rotator; material tolerance +/- 5%; lifted weight, net without accessories