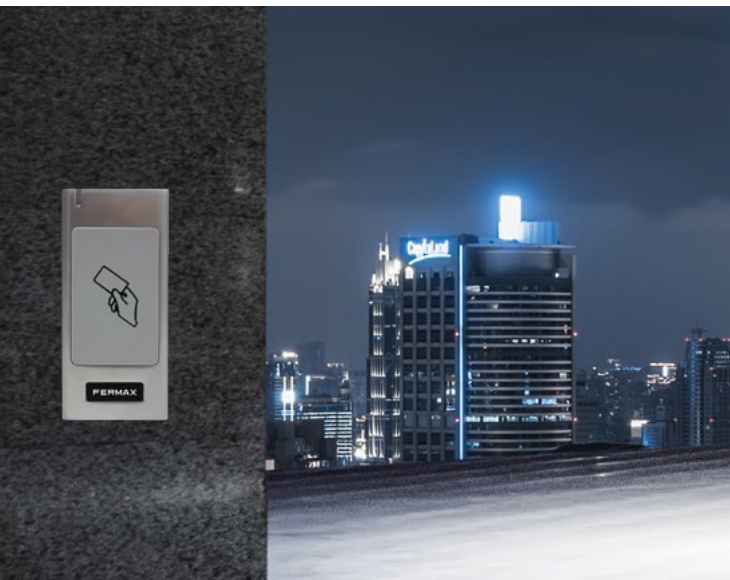


FERMAX Resistant



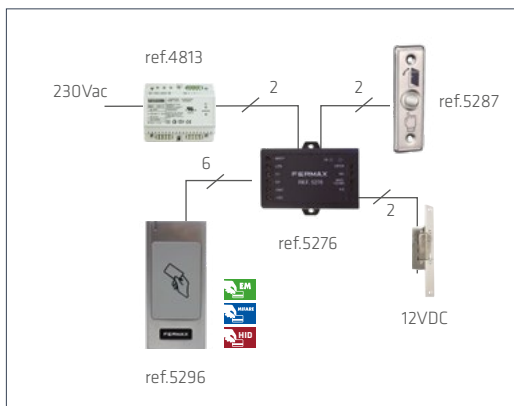
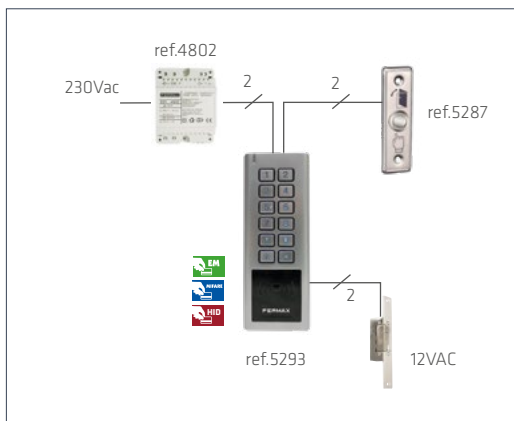
FERMAX presents the stand-alone anti-vandal access control line for external use.

RESISTANT readers are designed to blend into the most modern spaces and environments in perfect harmony, providing a high degree of resistance in places with extreme weather conditions or hazardous environments. For offices, stores, schools, residences, gyms, hospitals and buildings.

Its stainless steel finish (IP66 IK9), smooth curves, small dimensions and flat design allow surface installation even in the aluminium profile.

Highly weather-resistant.
Easy installation and perfect integration.

Installation Diagram



Expandable with a 2nd proximity reader
ref.5296 in 12 Vdc only.

FERMAX



Resistant

Anti-vandal access control range
Maximum robustness
IP66 IK9



PU01523

www.fermax.com

UNIVERSAL ACCESS CONTROL

READERS DESIGNED TO REMAIN INALTERABLE

RESISTANT MEMOKEY + PROXIMITY



REF.5293
Compact anti-vandal keypad. Internal controller. EM, HID, and MIFARE card reader.

RESISTANT PROXIMITY



REF.5296
Reader with external controller, EM, HID and MIFARE card reader.

Resistant Memokey + Proximity is a stand-alone anti-vandal access control unit with integrated keypad and contactless proximity reader that lets you manage up to 600 users.

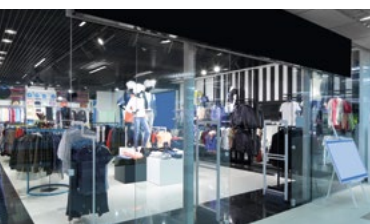
Resistant Proximity is a stand-alone anti-vandal access reader with capacity for up to 1000 cards due to its connection to external controller (ref.5276).

5238 MEMOKEY RESISTANT KIT

- 5293** RESISTANT MEMOKEY-PROX. KEYPAD
- 4802** POWER SUPPLY 12VAC / 1A
- 52750** 3 FERMAX MIFARE PROXIMITY CARDS
- 52740** 2 MIFARE PROXIMITY KEYRINGS

5237 PROXIMITY RESISTANT KIT

- 5296** RESISTANT PROXIMITY READER
- 4813** POWER SUPPLY 12VDC / 2A
- 5276** MINI CONTROLLER
- 52750** 3 FERMAX MIFARE PROXIMITY CARDS
- 52740** 2 MIFARE PROXIMITY KEYRINGS



BUSINESSES



GYMS



OFFICES



HOSPITALS

Resistant

ANTI-VANDAL

GENERAL FEATURES	5293	5296
Reader type	Anti-vandal	
Keypad type	Zamak	-
Finish	Steel	
Capacity	600	1.000 users (with ref.5276)
Assembly	Surface	
Controller	Internal	External
Audible/visual alert	Yes	
Doors (relays)	1 (2A, C, No, Nc)	
Number of MASTER cards	2	2 (ref.5276)
PROGRAMMING		
From the reader	Yes	
By programming keypad	Yes	
From PC	-	
FUNCTIONS		
Exit push button	Yes	Yes (ref.5276)
Door sensor	Yes	-
Auxiliary output	Yes (Alarm)	-
Cloning function	-	Yes(ref.5276)
Integrated proximity	Yes	Yes
SETTINGS		
Opening time	0-99 sec. (0=bistable)	
Door Open time	1 minute	-
Monostable/ Bistable modes	Yes	
Operating mode	Code, Card+Code, Card, Coded Multi-card	Card or Multi-card
Stand-alone / Centralised	Stand-alone/Centr.	
Code format length	4 to 6 digits	-
TECHNICAL FEATURES		
Reader dimensions	55x147x20	48x103x20
Flush box	-	-
Surface box	-	-
Environmental protection (IP/IK)	66/09	
Power supply (V)	12/28Vac/cc	9-24Vdc
Consumption (mA) w/lock release	65	25
Compatibility	EM, HID (ISOProxII), MIFARE	
Proximity protocol/Keypad transmission format	Wiegand26 4/8bits	Wiegand26
Operating temperature	[-20°C a 60°C]	

