

# BASKETBALL

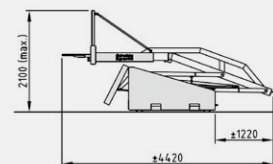
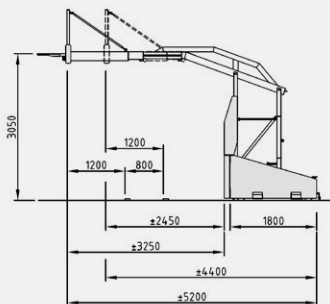
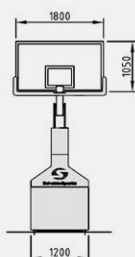
## PORTABLE UNITS



### SCHELDE SUPER SAM MULTI-ADJUST

- Highest class unit with regulated projection (within range of 245-325 cm)
- equipped with SAM (Spring Assisted Mechanism) - unique solution which allows to set up the unit by one person, without a need of any tools or electricity.
- no hydraulic parts, what eliminates oil leakages
- construction is based on patented DSF mechanism (Dynamic Sub Frame), which spreads the forces evenly on the sports floor and automatically sets the ring height on 305 cm
- protecting pads with thickness of 20 cm in blue color (other upon request)
- the backboard is made of tempered glass (20 mm thick) on a support frame, with a bottom edge protecting pad made of polyurethane
- Pro-Action 180° ring (brakes in 3 directions) in set with a white, anti-whip nylon net
- set of 6 swivel castors in front and 6 fixed castors on the back of the unit
- height of the ring can be set on 250 cm or 305 cm
- rear of side floor anchoring systems
- FIBA Level 1 certificate

**BB100.01.01**





## SCHELDE SUPER SAM 325

- Highest class unit with projection of 325 cm
- equipped with SAM (Spring Assisted Mechanism) - unique solution which avails to set up the unit by one person, without a need of any tools or electricity.
- no hydraulic parts, what eliminates oil leakages
- construction is based on patented DSF mechanism (Dynamic Sub Frame), which spreads the forces evenly on the sports floor and automatically sets the ring height on 305 cm
- protecting pads with thickness of 20 cm in blue color (other upon request)
- the backboard is made of tempered glass (20 mm thick) on a support frame, with a bottom edge protecting pad made of polyurethane
- Pro-Action 180° ring (brakes in 3 directions) in set with a white, anti-whip nylon net
- set of 6 swivel castors in front and 6 fixed castors on the back of the unit
- height of the ring can be set on 250 cm or 305 cm
- rear of side floor anchoring systems
- FIBA Level 1 certificate

**BB100.03.01**



## SCHELDE SAM 225 CLUB

- Highest class unit with projection of 225 cm
- equipped with SAM (Spring Assisted Mechanism) - unique solution which avails to set up the unit by one person, without a need of any tools or electricity.
- no hydraulic parts, what eliminates oil leakages
- construction is based on the APF (Automatic Pedestal Feet) which automatically sets the ring height on 305 cm
- protecting pads with thickness of 20 cm in blue color (other upon request)
- the backboard is made of tempered glass (20 mm thick) on a support frame, with a bottom edge protecting pad made of polyurethane
- Dunk ring in set with a white, anti-whip nylon net
- set of 4 swivel castors in front and 4 fixed castors on the back of the unit
- height of the ring can be set on 250 cm or 305 cm
- rear of side floor anchoring systems
- FIBA Level 3 certificate

**BB100.02.01**



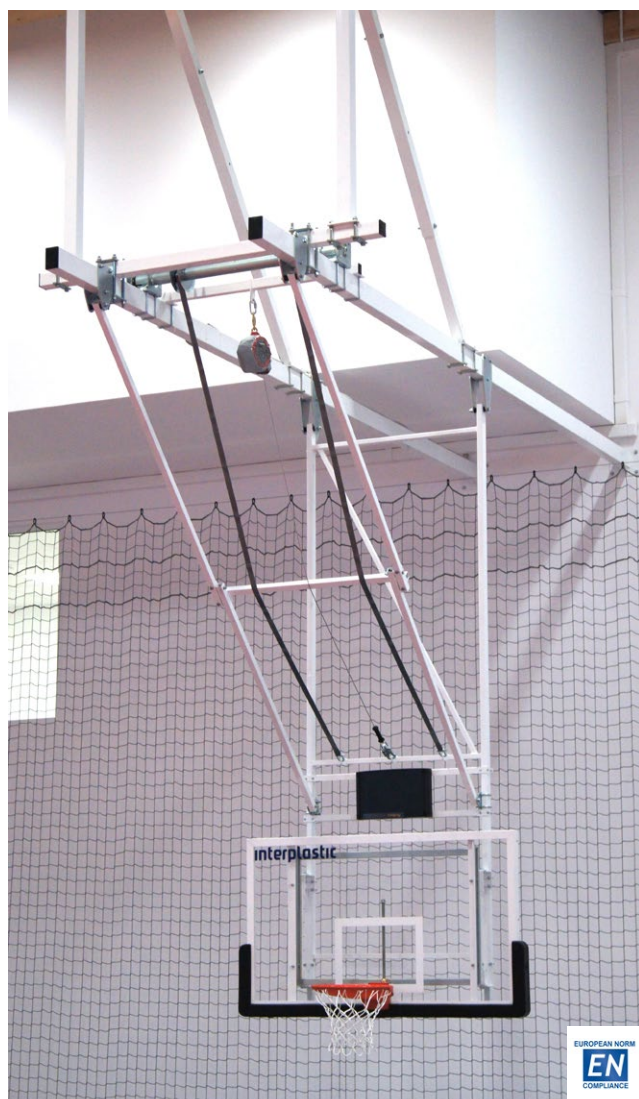


## CEILING SUSPENDED UNITS

- Simple and long lasting steel structure
- Adaptable for most of sports halls with height from 6 to 9 m
- Made in compliance with FIBA and EN 1270 norms
- Easy and quick to deploy
- Maintenance free
- 60 months warranty for metal structure

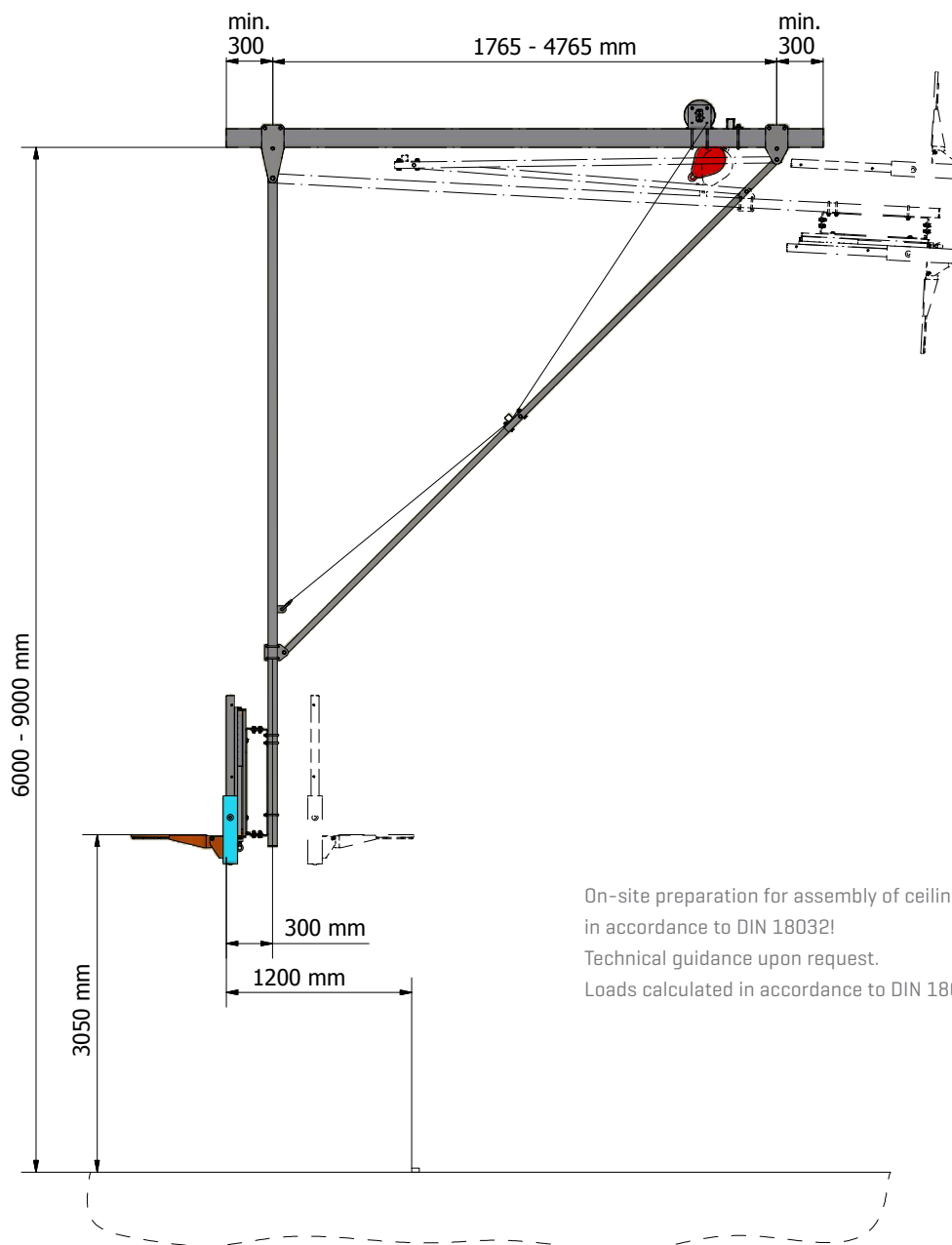
Ceiling suspended construction. Made of steel profiles, protected against corrosion by powder-coating. Electrically operated with use of an engine [single-phase, 230V; 120 Nm]. Controlled by a provided key switch. Additional break [load arrestor] provides maximum safety in case of an engine failure. Thanks to applied retracting belts construction works quiet and smooth. Option: manual height regulation mechanism [260-305 cm]. Installation: concrete, wooden or steel ceiling structures. Designed for: 180x150 cm / 120x90 cm; acrylic / tempered glass / laminate backboards.

**BB101.01**

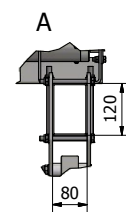
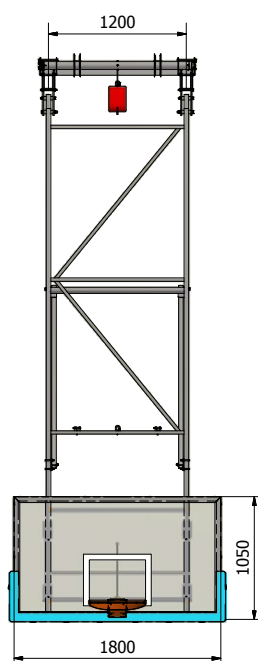
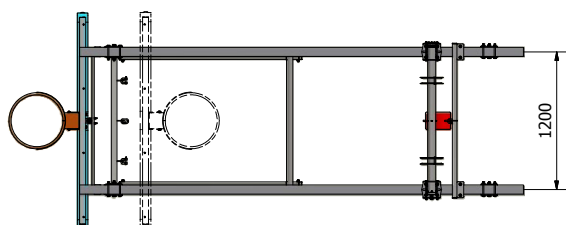


EUROPEAN NORM  
**EN**  
COMPLIANCE

EUROPEAN NORM  
**EN**  
COMPLIANCE



On-site preparation for assembly of ceiling units to be prepared in accordance to DIN 18032!  
 Technical guidance upon request.  
 Loads calculated in accordance to DIN 18032-6 and EN 1270!







## WALL MOUNTED, UP-FOLDED BASKETBALL UNITS

- Easy to install - the only requirement is a sufficient, flat, concrete surface
- Standard projections: 1,25; 2,25; 3,25 and 4,25 m. Customized lengths upon request
- Easy and quick to deploy
- Maintenance free
- 60 months warranty for metal structure
- Powered with standard single-phase motor (230V; 50-60 Hz)

Wall mounted basketball construction. Folded up [on the wall] with use of a motor. Made of steel profiles protected against corrosion by powder-coating. Single-phase engine powered with standard 230V, 50-60 Hz power supply, hidden in a special designed galvanized console, installed on a pair of wall brackets. Provided with heavy duty chains. Thanks to applied retracting belts construction works quiet and smooth. Additional break [load arrestor] provides maximum safety in case of an engine failure.

Option: manual height regulation mechanism [260-305 cm].

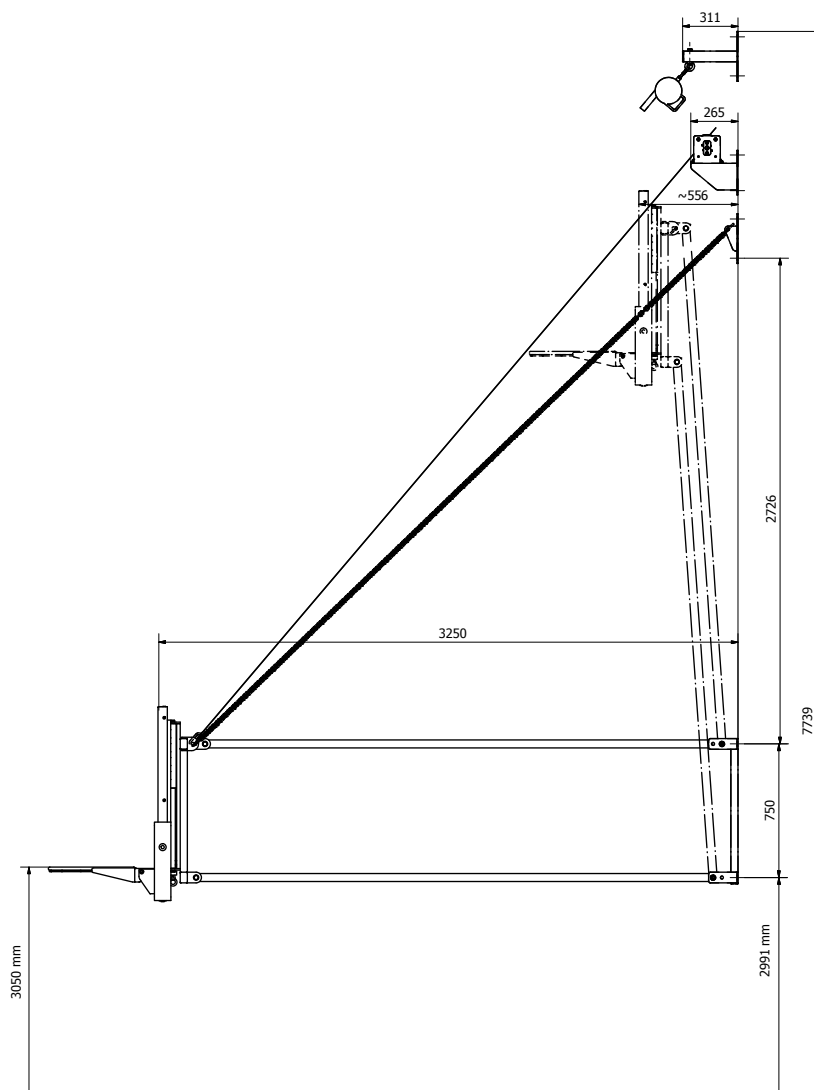
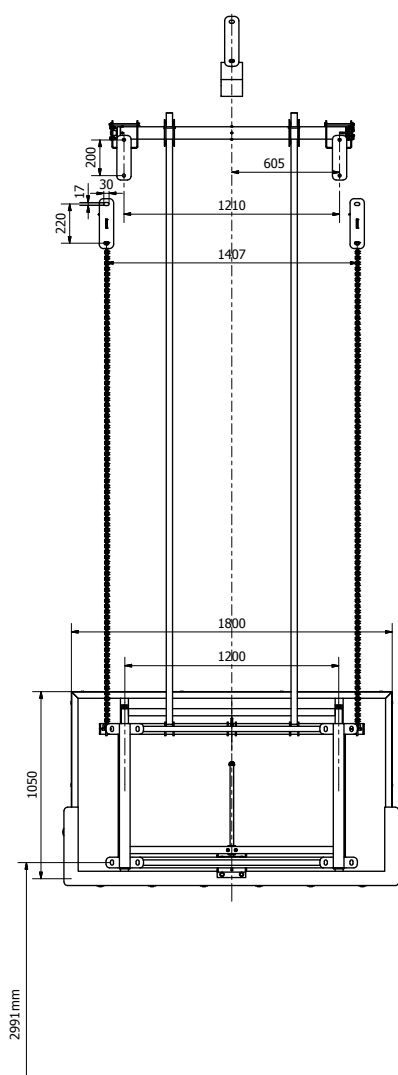
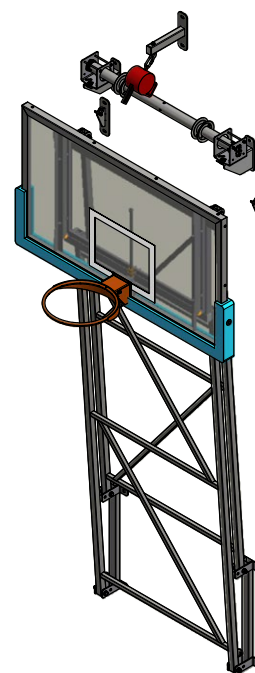
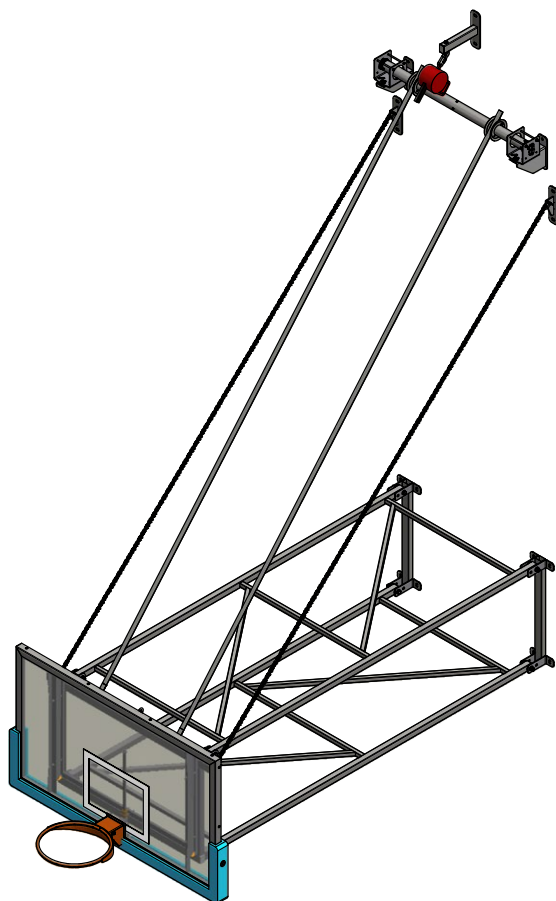
Installation: only on solid concrete walls. It is required to use adhesive anchors and threaded rods for the installation of engines', chains' and safety brake's brackets.

Designed for: 180x150 cm / 120x90 cm; acrylic / tempered glass / laminate backboards.

**BB101.02**



EUROPEAN NORM  
**EN**  
COMPLIANCE





## WALL MOUNTED UNITS

- Super durable constructions
- Projections from 0,8 up to 2,45 m
- Made in compliance with EN 1270 norm
- Easy and quick to operate
- Maintenance free



Wall mounted basketball construction.

FOLDABLE **BB101.03**

FIXED **BB101.04**

Made of steel profiles, protected against corrosion by powder-coating. Manually operated with use of a provided hook.

Option: height regulation mechanism (260-305 cm).

Installation: concrete walls or pillars.

Designed for: 180x150 cm / 120x90 cm; acrylic / tempered glass / MDF / laminate backboards.



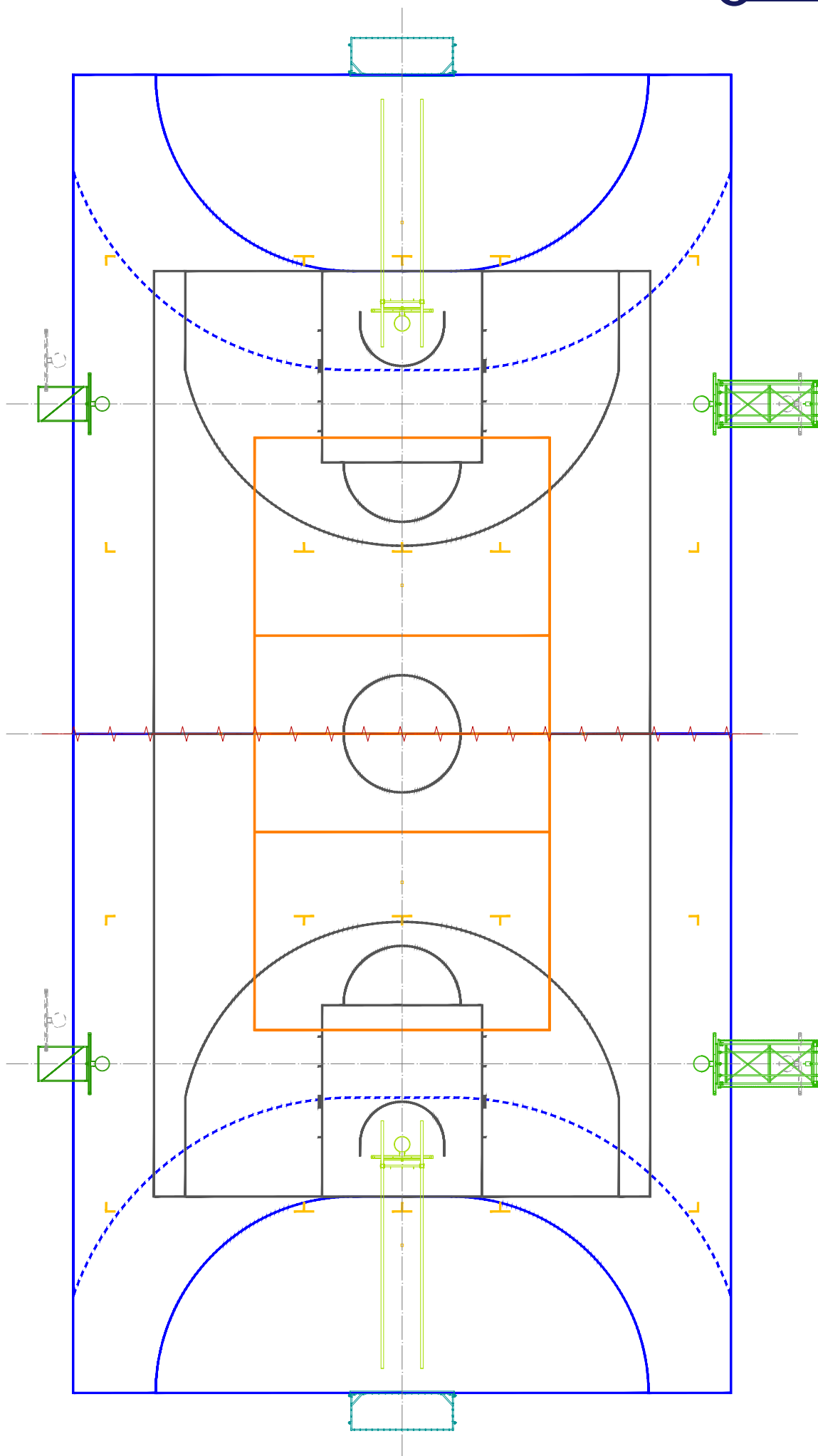
## FIXED CONSTRUCTIONS WITH INTEGRATED HEIGHT REGULATION (TRAINING UNIT)

- Very easy to install and operate
- Projection 0,5 m
- Made in compliance with EN 1270 norm
- Integrated height mechanism
- Maintenance free

Wall mounted fixed construction . Made of steel profiles protected against corrosion by powder-coating. Manually operated with use of a provided hook. Integrated manual height regulation mechanism (260-305 cm).

Installation: concrete walls or pillars.

**BB101.05**





## ACCESSORIES



### DUNK RING PRO

Professional dunk ring. Made of steel, in accordance to EN 1270. Color RAL 2002 (blood orange).

- Double layer of coat prevents corrosion (outdoor use available)
- safe (no hooks) net attachment type (in 12 points, provided with stainless steel rod)
- tensioning springs adjustable
- mounting holes in accordance to EN 1270
- ring made of full, 18 mm rod

**BB102.01.01**



### DUNK RING STD

Training dunk ring. Made of steel, in accordance to EN 1270. Color RAL 2008 (orange).

- Double layer of coat prevents corrosion (outdoor use available)
- safe (no hooks) net attachment type (in 12 points, provided with stainless steel rod)
- mounting holes in accordance to EN 1270
- ring made of 18 mm pipe

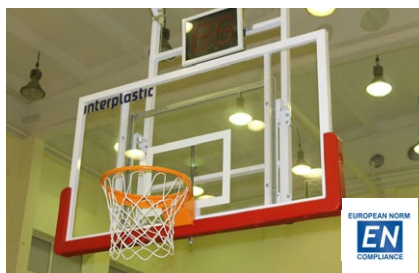
**BB102.01.02**



### FIXED RING STD

Standard basketball ring. Made of steel. 12 hooks for attaching the net. Suitable for indoor use.

**BB102.01.03**



### TEMPERED GLASS BACKBOARD 180X105 CM

180x105 CM TEMPERED GLASS BACKBOARD on a support steel, powder coated frame. Meets FIBA standards. Thickness of the glass 10 mm. Due to its unique construction, the ring is installed directly to the support structure extending product life (heavy dunks resistant). Target zone lines in accordance to EN 1270.

**BB102.02.01**



### ACRYLIC BACKBOARD

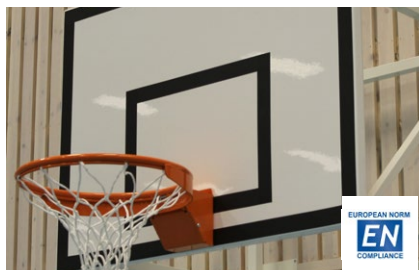
180X105 CM ACRYLIC BACKBOARD on a support steel, powder coated frame. Thickness of the glass 10 mm. Due to its unique construction, the ring is installed directly to the support structure extending product life (heavy dunks resistant). Target zone lines in accordance to EN 1270.

**BB102.02.02**



120x90 CM ACRYLIC BACKBOARD on a steel, powder coated frame. Thickness of the glass 10 mm. Due to its unique construction, the ring is installed directly to the support structure extending product life (heavy dunks resistant). Target zone lines in accordance to EN 1270.

**BB102.02.03**



### EPOXY LAMINATED BACKBOARD

180X105 CM EPOXY LAMINATED BACKBOARD on a support steel, powder coated frame. Mounting holes and target zone lines in accordance to EN 1270.

**BB102.02.04**

120x90 CM EPOXY LAMINATED BACKBOARD on a support steel, powder coated frame. Mounting holes and target zone lines in accordance to EN 1270.

**BB102.02.04**



### PU BOTTOM EDGE SAFETY PAD

Heavy duty polyurethane foam padding for tempered glass and acrylic backboards. Installed with use of bolts and screws (both provided). Outdoor and indoor use possible.

Available in:

180x105 cm	BLUE	<b>BB102.03.01</b>
	RED	<b>BB102.03.02</b>
	GREEN	<b>BB102.03.03</b>
	BLACK	<b>BB102.03.04</b>

120x90 cm	BLUE	<b>BB102.03.05</b>
	RED	<b>BB102.03.06</b>



### EVA BOTTOM EDGE SAFETY PAD

EVA foam padding for acrylic backboards. Installed with use of bolts and screws (both provided). Outdoor and indoor use possible.

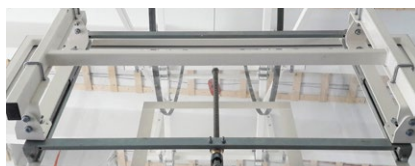
Available in:

180x105 cm	BLUE	<b>BB102.03.07</b>
	RED	<b>BB102.03.08</b>
	GREEN	<b>BB102.03.09</b>
120x90 cm	BLUE	<b>BB102.03.11</b>
	RED	<b>BB102.03.12</b>
	GREEN	<b>BB102.03.13</b>



### POLYPROPYLENE NET

Polypropylene net, 5 mm thick, 12 points of attachment, white. **BB102.04.01**



### HEIGHT REGULATION MECHANISM

Manual height regulation mechanism. Gives the possibility to set up the ring height on 260 or 305 cm from the floor.

**BB102.05**



### LOAD ARRESTOR (recommended for ceiling and wall suspended units)

Safety device, that prevents from accidents in case of an engine, belt, steel wire or any other consumable elements failure.

Constructions up to 140 kg: **BB102.06.14**

Constructions up to 300 kg: **BB102.06.30**





## SINGLE POST OUTDOOR BASKETBALL 2,25 m

- Super durable - 5 years warranty for steel, hot galvanized components
- Tested by several international institution in reference to EN 1270
- Available with professional, UV resistant, 180x105 cm acrylic backboard
- Thanks to unique construction of backboard's frame, the acrylic glass has no holes, and the used gaskets prevents it from damages, even during heavy dunks
- In standard offered with superb durable basketball dunk ring, made in accordance to EN 1270
- Safety pad for bottom edge of backboard included (installed on screws, made of EVA foam)



Outdoor basketball unit with projection of 2,25 m. Type 6, class B in accordance to EN 1270. Heavy-duty steel profile 150x150x4 mm, protected against corrosion by hot galvanization. Backboard installed to the frame with use of steel, powder coated [twice: base + final layer] L-shaped profiles in white. Backboard has no direct contact to the metal parts in order to prevent its damages [i.e. during dunking]. Provided with:

- 500 mm deep steel, hot galvanized socket
- acrylic backboard 180x105 cm on a steel frame
- professional dunk ring
- bottom edge safety pad

Optional features:

- Upright injury protecting pad - made of polyethylene foam, covered with UV and water resistant PVC. Height 200 cm, thickness 5 cm. Installed with use of Velcro.
- Height regulation mechanism 260-305 cm, provided with crank

Made of steel profiles, protected against corrosion by powder-coating. Manually operated with use of a provided hook.

Option: height regulation mechanism [260-305 cm].

Installation: concrete walls or pillars.

Designed for: 180x150 cm / 120x90 cm; acrylic / tempered glass / MDF / laminate backboards.

**BB101.06.22**





## SINGLE POST OUTDOOR BASKETBALL 1,2 M, 1,4 M OR 1,65 M

- Super durable - 5 years warranty for steel, hot galvanized components
- Made and tested in accordance to EN 1270
- Available with epoxy resin laminated or steel, hot galvanized backboards (180x105 cm or 120x90 cm)
- Height regulation available
- Certificate of conformity with EN norm



Single post outdoor basketball backboard support structure with projection of:

- 1,65 m - type 6 class C in accordance to EN 1270
- 1,4 m - type 6 class D in accordance to EN 1270
- 1,2 m - type 6 class D in accordance to EN 1270

Upright and projection made of steel profile 120x120x3 mm, protected against corrosion by hot galvanization. Upright removable (installed in a ground sleeve).

Nets, sockets, backboards, rings and height regulation mechanisms sold separately.

Projection:

165 cm

140 cm

120 cm

Code:

**BB101.16.16**

**BB101.16.14**

**BB101.16.12**





## OUTDOOR BASKETBALL

### 1,65 M OR 2,25 M

- Super durable - 5 years warranty for steel, hot galvanized components
- Made and tested in accordance to EN 1270
- Available with epoxy resin laminated or steel, hot galvanized backboards (180x105 cm or 120x90 cm)
- Height regulation available
- Certificate of conformity with EN norm



Double post outdoor basketball backboard support structure with projection of:

- 1,65 m - type 6 class C in accordance to EN 1270
- 2,25 m - type 6 class B in accordance to EN 1270

Upright and projection made of steel profile 100x100x3 mm, protected against corrosion by hot galvanization. Uprights removable (installed in ground sleeves).

Nets, sockets, backboards, rings and height regulation mechanisms sold separately.

Projection:

165 cm

225 cm

Code:

**BB101.26.16**

**BB101.26.22**

## SOCKETS



### Ground socket for 150x150 mm profile

Ground socket for 150x150 mm profile made of steel, protected against corrosion by zinc galvanization. Depth 500 mm.

**BB103.01.01**



### Ground socket for 120x120 mm profile

Ground socket for 120x120 mm profile made of steel, protected against corrosion by zinc galvanization. Depth 500 mm.

**BB103.01.02**



### Ground socket for 100x100 mm profile

Ground socket for 100x100 mm profile made of steel, protected against corrosion by zinc galvanization. Depth 500 mm. 2 needed for one double post support structure.

**BB103.01.03**



### Epoxy resin laminated backboard

180x105 cm epoxy resin laminated backboard on a support steel, hot galvanized frame. Mounting holes and target zone lines in accordance to EN 1270. Designed for outdoor constructions. Color white, lines: black.

Code	Designed for
<b>BB102.02.24</b>	<b>BB101.16</b>
<b>BB102.02.34</b>	<b>BB101.26</b>

120x90 cm epoxy resin laminated backboard on a support steel, hot galvanized frame. Mounting holes and target zone lines in accordance to EN 1270. Designed for outdoor constructions. Color white, lines: black.

Code	Designed for
<b>BB102.02.25</b>	<b>BB101.16</b>
<b>BB102.02.35</b>	<b>BB101.26</b>



### Steel, vandal-proof backboard

Vandal-proof 180x105 cm steel, hot galvanized basketball backboard. Dimensions and ring's installation holes in accordance to EN 1270. Designed for BB101.16 constructions only.

**BB102.02.44**



### Laminated backboard with an integrated height regulation mechanism

180x105 cm epoxy resin laminated backboard with an integrated, hot galvanized height regulation mechanism [260-305 cm]. Mounting holes and target zone lines in accordance to EN 1270. Designed for BB101.16 constructions only. Color white, lines: black.

**BB102.02.54**



### Outdoor fixed ring

Vandal-proof, outdoor use basketball ring. Made of steel, in accordance to EN 1270.

- protected against corrosion by hot galvanization
- mounting holes in accordance to EN 1270
- reinforcing 5 mm thick plates
- vandal-proof
- ring made of 18 mm pipe

**BB102.01.04**



### Outdoor dunk ring

Training dunk ring. Made of steel, in accordance to EN 1270. Color RAL 2008 [orange].

- Designed for outdoor use: double layer of powder coat prevents corrosion
- safe [no hooks] net attachment type [in 12 points, provided with stainless steel rod]
- mounting holes in accordance to EN 1270
- ring made of 18 mm pipe

**BB102.01.02**



### Chain net

Basketball net made of steel chain, in accordance to EN 1270.

- Galvanized steel chain
- No sharp edges for safety
- Can be used outdoors
- Fits all standard basketball rims with 12 eyelets
- Easy to install

**BB102.04.02**