



FIVB OFFICIAL SET FOR VOLLEYBALL - SENOH

- Designed for highest level competitions, including such events like Olympic Games, World League or World Championships.
- Solid, proven items, tested during several events since Olympic Games in 1964
- FIVB OFFICIAL certificate

Senoh

FIVB
FÉDÉRATION INTERNATIONALE
DE VOLLEYBALL



EUROPEAN NORM
EN
COMPLIANCE

VB201.01 Volleyball uprights

[special designed steel profile 76,3x5,15 mm, powder coated in red]. Designed for indoor use, telescopic height adjustment. Weight: 60 kg/pair. Senoh ref. DE1015

VB202.01.01 Safety pads

Designed for indoor use, made of urethane foam. Weight: 16 kg/pair. Standard color: blue. Senoh ref. [DE2000](#)



VB202.02 Net

Designed for indoor use, made of polyethylene, with technora cable. Dimensions: 9500x1000 mm. Mesh: square, 100x100 mm. Senoh ref. DE8003

VB202.04 Antennae

Made of fiberglass. Weight: 1,2 kg. Senoh ref. [DE9411](#)



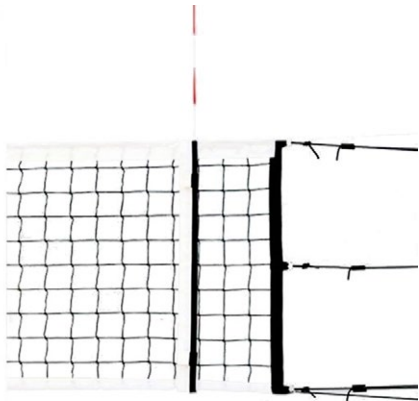
VB203.01 - ground sockets

Made of steel with special designed aluminum alloy, integrated lid. Designed for suspended sports floors [on a wooden sub-structure]. Senoh ref. [KD0140](#)

VB203.02 - ground sockets

Made of steel with special designed aluminum alloy, integrated lid. Designed for non-suspended sports floors [synthetic glued directly to concrete]. Senoh ref. [KD0141](#)

NETS



PROFESSIONAL VOLLEYBALL NET

Professional volleyball net. Upper cable made of Kevlar, 11.7 m length, upper tape 7 cm wide, lower tape 5 cm. 6 point assembly to uprights. Made of polypropylene, colour black, 3 mm thickness, mesh size 10x10 cm

VB204.01.01

TRAINING VOLLEYBALL NET

Training volleyball net. Upper cable made of steel, upper tape 5 cm wide, 4 point assembly to uprights. Made of polypropylene, colour black, 3 mm thickness, mesh size 10x10 cm. Antennae's with pockets included.

VB204.02.01

Net antennae set with pockets, made of fiberglass. Dimensions and colour due to FIVB game rules.

VB204.03



PROFESSIONAL VOLLEYBALL UPRIGHTS 80x80 MM

- Made in compliance with EN 1271 norm - Type 1, class B
- Designed for indoor and outdoor use

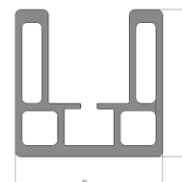
Professional volleyball uprights [type 1 class B according to EN 1271]. Made of special designed [internally reinforced] aluminum profile 80x80 mm. Tensioning apparatus is hidden inside the profile. Uprights are protected against corrosion by powder-coating [in red RAL 3020 color]. Length of a single upright: ~ 3 m. The set contains:

- Upright with tensioning apparatus
- Upright with net attachments
- Crank handle

Height of the net is regulated smoothly, and tensioning apparatus/passive net attachments are blocked eccentricity.

This feature allows to use uprights also for tennis and badminton.

VB201.02



TRAINING VOLLEYBALL UPRIGHTS 100 MM

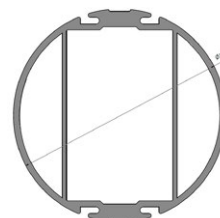
- Made in compliance with EN 1271 norm - Type 1, class C
- Designed for indoor and outdoor use

Training volleyball uprights [type 1 class C according to EN 1271]. Made of special designed [internally reinforced] aluminum profile with diameter of 100 mm. The shape of the profile allows to use as a middle upright. Uprights are protected against corrosion by anodizing [natural aluminum color]. Length of a single upright: ~ 3 m. The set contains:

- Upright with tensioning apparatus
- Upright with net attachments
- Crank handle

Height of the net is regulated smoothly, and tensioning apparatus/passive net attachments are locked with use of a single knob. This feature allows to use uprights also for badminton.

VB201.03



Volleyball - Accessories

GROUND SOCKETS



Stainless steel socket for 80x80 mm profile. Internal dimension: 82x82 mm, depth 335 mm. Designed for indoor use and for suspended sport floors (on a wooden sub-construction).
VB203.03



Steel socket for 100 mm profile. Internal dimension: 102 mm, depth 300 mm. Designed for indoor (for suspended sport floors - on a wooden sub-construction) and outdoor use.
VB203.04



Stainless steel socket for 100 mm profile. Internal dimension: 102 mm, depth 300 mm. Designed for indoor use for non-suspended sport floors (floors directly on concrete). Provided together with integrated floor frame and Plexiglas lid.
VB203.05



Aluminum socket for 80x80 mm profile. Inner dimension: 82x82 mm, depth 350 mm. Designed for outdoor use only.
FB102.01.02



Lid for 80x80 mm profile socket. Made of stainless steel, for outdoor use.
FB102.02.02



Lid for 100 mm profile socket made of aluminum. Designed for VB203.04 socket (for outdoor use only).
VB203.04.

REFEREE STANDS



VB202.03.01 - referee stand

Made of steel, painted in red. Stand has a height regulation mechanism and pads protecting whole construction. Equipped with wheels for easy transport. Weight: 125 kg. Senoh ref. **DL0520**

FOLDABLE REFEREE'S STAND

Description:

- Made of steel, protected against corrosion by powder-coating
- Anti-slip platform made of rifled aluminum
- Backrest made of water resistant plywood
- Available in indoor and outdoor version
- 3 heights of the platform
- Equipped with wheels
- Installation possible to any volleyball upright (with use of Velcro tapes)

Usage	Color (RAL)
Indoor	Red [3020]
Outdoor	Yellow [1021]

Code
VB202.03.02
VB202.03.03





SUBSTITUTION PADDLES IN BOX

Substitution paddles made of PVC [pad] and PMMA [handle]. Set for two competing teams, safe storage in boxes. Paddles separated in box for easy and quick handling. Colors:

Boxes - white

Paddles - white with black numbers

Numbers

1-20

1-22

1-24

Code

[VB202.05.20](#)

[VB202.05.22](#)

[VB202.05.24](#)

PROTECTION PADS FOR UPRIGHTS



PROFESSIONAL VOLLEYBALL UPRIGHTS PROTECTING PADS

Filled in with polyethylene foam [water resistant] app. 3 cm thick, density app. 100 kg/m³. Covered with UV and water resistant PVC. Solid plywood construction, mounted by Velcro tapes to uprights.

[VB202.01.02](#)



STANDARD VOLLEYBALL UPRIGHTS PROTECTING PADS

Filled in with polyethylene foam [water resistant] app. 3 cm thick, density app. 100 kg/m³. Covered with UV and water resistant PVC.

[VB202.01.03](#)

FLOOR FRAME WITH PLEXIGLASS LID

Clear [VB202.06](#)

Oak [VB202.06.01](#)

Beech [VB202.06.02](#)

Maple [VB202.06.03](#)



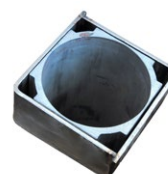
Aluminum adaptor

Allows to install all 76 mm volleyball uprights [incl. SENOH] into a standard 80x80 mm profile socket.

[VB203.80.76](#)



Standard socket for 80x80 mm profile



Socket with installed adaptor.

Volleyball - TRAINING ACCESSORIES



Spike and serve trainer

The device allows quick attachment of the ball and lifting it to the height of the attack ball (~320 cm) for spiking or serving according to player height. Soft rubber grips protect the ball and protect the attacker's hand in the event of an imprecise hit. Made of aluminium tubes Ø 22 mm, powder coated silver [RAL 9006]

VB205.01



Horizontal and inclined platform

Horizontal and inclined platform are two complementary elements that constitute one instrument for exercises aimed to protect the talocrural joint and knee. The racks of both platforms are made of powder coated metal tubes. The top part is finished with a non-slip plywood.

VB205.02



Court partitioning net

This additional net prevents balls from going under the main play net. It is fastened with Velcro to the bottom of the play net. Mesh: 10x10cm, thickness 3mm, material: polypropylene. Net size: 10,5 x 2,5 m[LxH]

VB205.03



Straight block trainer

Block trainer hung on a net, straight. The device is designed to train attack and defense. Made of aluminium tubes Ø 22 mm, powder coated silver [RAL 9006]. Upper and lower frames are equipped with Velcro for mounting to the net.

VB205.04



Inclined Block trainer

Device designed for training attack, assurance and defense. Frame made of aluminium tubes Ø 22 mm, powder coated in silver [RAL 9006]. The upper part (made of 6 mm thick plywood) is inclined at an angle of 25°. The device is equipped with Velcro straps for easy installation on a main play net. The bottom part can be folded telescopically for easy transport and storage.

VB205.05



A set for practicing proper passing and targeting a ball to the rim.

Set includes:

- 6 rackets made of plywood
- 2 steel rims with PP net
- 3 tennis balls
- transport basket

VB205.06



Freestanding block trainer

Block trainer is a device is designed to train attack, providing block area with dimensions of 100x50 cm. The top part is made of polyurethane foam on a strengthening plywood, upholstered with artificial leather. Height and tilt angle of the device can be adjusted by using knobs. The construction is installed on a support steel base, protected against corrosion by powder coating in RAL 9006. The base weights around 50 kg and it is equipped with transport wheels.

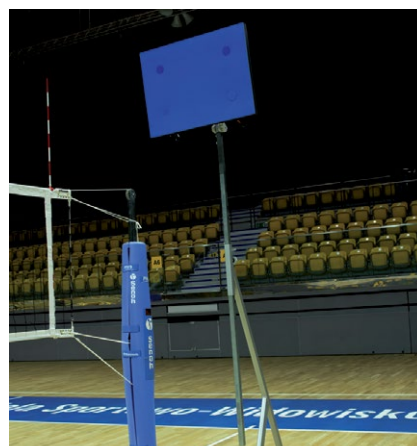
VB205.07



Target challenger

The target challenger is a device designed for training accuracy of passing. It is a steel rim with a diameter of 45 cm with adjustable height (from 165 to 305 cm) and angle of inclination installed on a support structure made of steel (powder coated in RAL 9006). The base contains counterweights and transport wheels. White, 120 cm long net included.

VB205.08



Multi-training kit

Multifunctional volleyball training kit. Allows to train blocking, attacking and targeting. Includes: 45 cm diameter steel rim with white net and blocking pad made of foam (67x50 cm; 40 mm thick).

Height of both rim and pad can be adjusted from 190 to 320 cm, as well as the angle of inclination. Steel base with approximately 28 kg of counterweights is equipped with transport wheels.

VB205.09