

TAPE FEET, NAUHAOHJAIN JALAT

Attachments

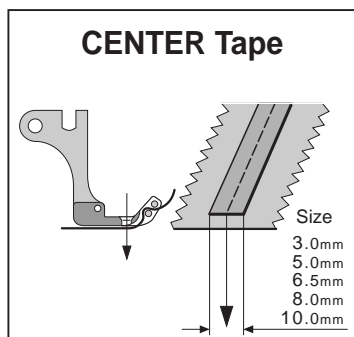
PIEDS ARTICULÉS POSE BANDE
PIES PRENSATELA DE TUBO

GELENK-BANDAUFNÄHFÜSSE
管状压脚

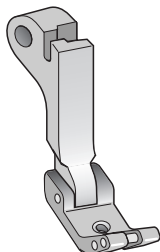
SUISEI®



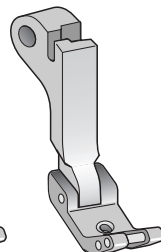
TU30C~100C, TU50L~100L, TU50R~100R Hinged Tape Feet <Center> <Left> <Right>
NIVELNAUHAOHJAINJALKA, KESKI, VASEN, OIKEA



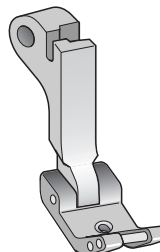
(P318C)
TU30C



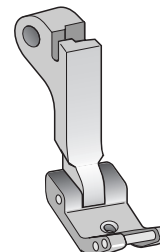
(P3316C)
TU50C



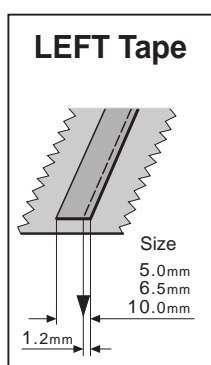
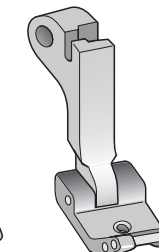
(P314C)
TU65C



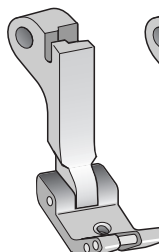
TU80C



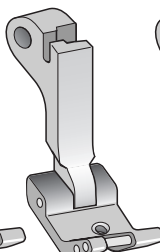
(P338C)
TU100C



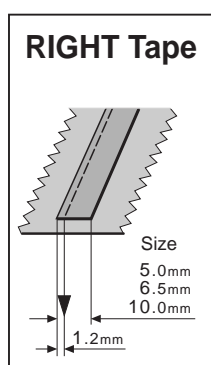
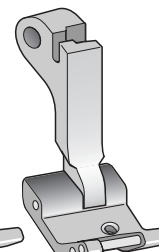
(P3316L)
TU50L



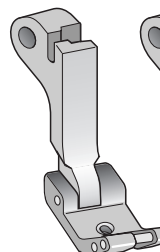
(P314L)
TU65L



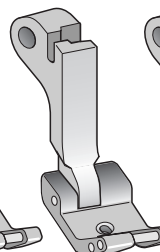
(P338L)
TU100L



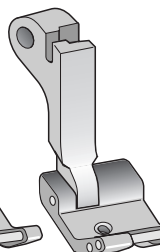
(P3316R)
TU50R



(P314R)
TU65R



(P338R)
TU100R



- Foot shoes are precisely grooved to needle position, and it enables to stabilize sewing tape on at curving and corner.
- Old Hinged Tube feet "P318L, P318R, P312C, P312L, P312R" are discontinued. We do recommend **A18** on next page instead of them.

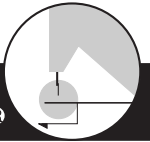
SPECIAL TUBE FEET, ERIKOISNAUHAOHJAINJALAT

Attachments

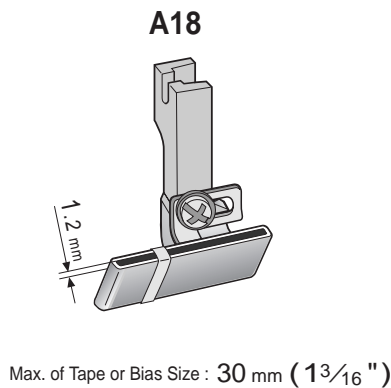
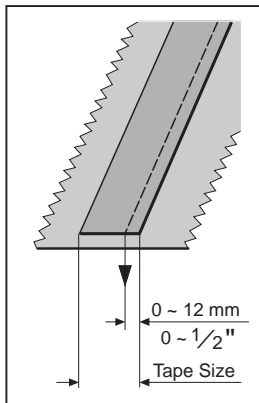
PIEDS SPECIAL POUR POSE CORDONNET
PIES PRENSATELA ESPECIAL PARA COSER VIVOS DE CORDÓN

SPEZIAL-BANDAUFNÄHFÜSSE
特殊管状压脚

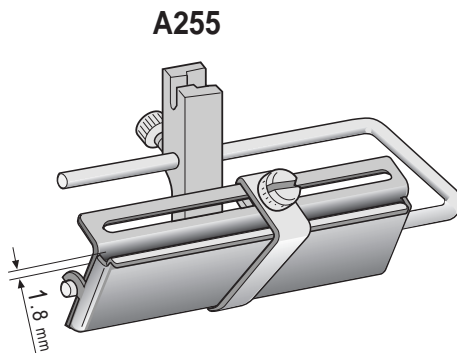
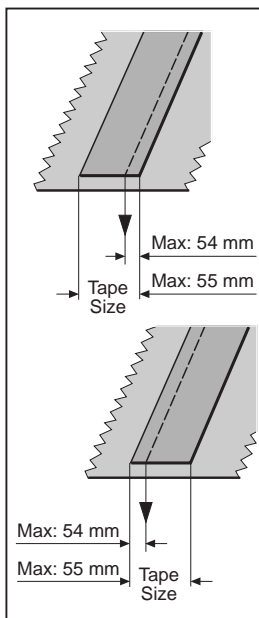
SUISEI®



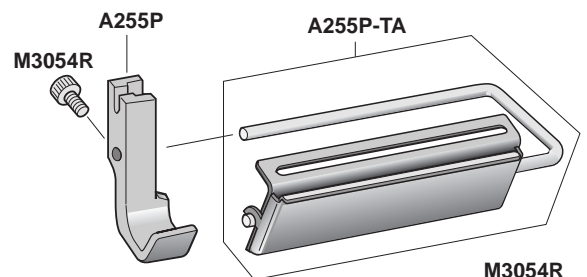
A18 Adjustable Tape Foot <30mm> SÄÄDETTÄVÄ NAUHAOHJAINPAININJALKA 30mm



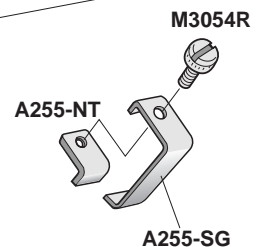
A255 Adjustable Tape Foot <55mm> SÄÄDETTÄVÄ NAUHAOHJAINPAININJALKA 50mm



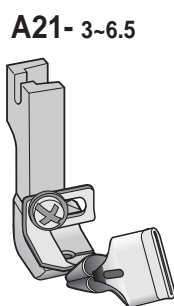
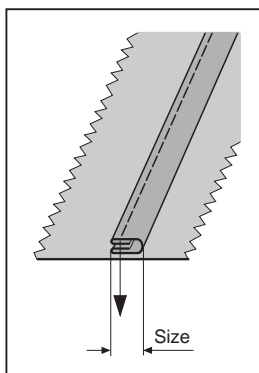
- This foot can be used at right or left side by adjusting guide position .
VOIDAAN SÄÄTÄÄ SEKÄ OIKEALLE ETTÄ VASEMMALLE



Part Number	Description
A255P	Presser Foot
A255-TA	Adjustable Tube Asm.
A255-SG	Slide Guide
A255-NT	Nut (M3x0.5)
M3054R	Screw (M3x0.5)



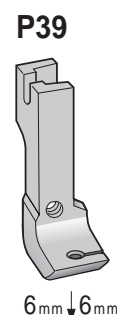
A21- 3~6.5 Bias Loop Piping Foot VINOSILMUKKA TEREPAININJALKA



ALOITUS KOKO Bias Tape Sizes		LOPULLINEN KOKO Finished Sizes	
12 mm	1/2 "	3 mm	1/8 "
16 "	5/8 "	4 "	5/32 "
20 "	13/16 "	5 "	3/16 "
25 "	1 "	6.5 "	1/4 "

KÄYTÄ SOPIVAA LEVEYTTÄ HUOMIOONOTTAEN NAUHAN ELASTISUUDEN
Use appropriate width of bias considering tape elasticity.

Foot and Parts for "A18" or "A21" TARVIKKEET



Solid Foot for "A18,A21"

A18-PA

- A18-P1 Screw (9/64)
- A18-P2 Spring Washer
- A18-P3 Washer