

WEEKLY LETTER: 23rd - 27th November 2020

MONDAY

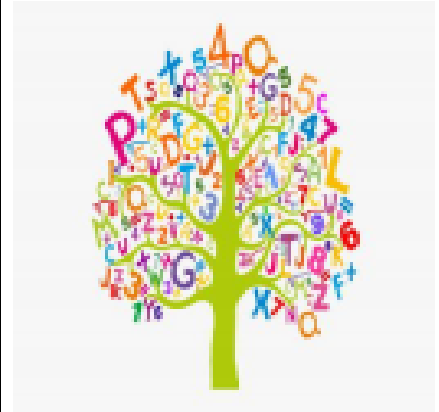
JUMPPA



LEAVE PARK: 09:00

TUESDAY

LITTLE ENGLISH



VISKARI

LEAVE PARK: 09:15

WEDNESDAY

LITTLE ENGLISH



VISKARI

LEAVE PARK: 09:15

THURSDAY

THANKSGIVING



LEAVE PARK 09:15

FRIDAY

PIKKUJOULU



LEAVE PARK: 09:15

Messages

- On **Jumppa Day**, we will go to **ERKKERI Liikuntasali** Haahkapolku 3 Hoivakoti Untuvan talon kulmassa. Please bring **water bottles** and comfortable clothes.
- Please remember if your child has **any flu-like symptoms**, they need to stay at home until they are tested.

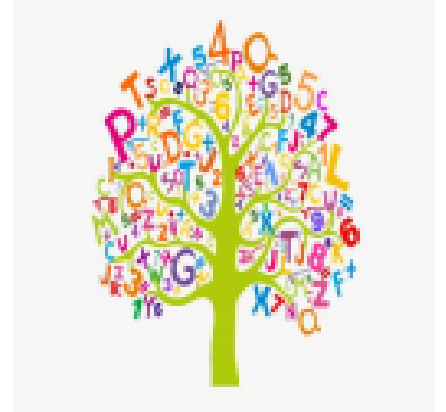
Many thanks, Little Side teachers 😊

WEEKLY LETTER: 23rd -27th November 2020**MONDAY**

JUMPPA

LEAVE PARK: 09:00**TUESDAY**

LITTLE ENGLISH



VISKARI

LEAVE PARK: 09:15

WEDNESDAY

LITTLE ENGLISH



VISKARI

LEAVE PARK: 09:15

THURSDAY

THANKSGIVING



LEAVE PARK 09:15

FRIDAY

PIKKUJOULU



LEAVE PARK: 09:15

Messages

- On **Jumpa Day**, we will go to **ERKKERI Liikuntasali** Haahkapolku 3 Hoivakoti Untuvan talon kulmassa. Please bring **water bottles** and comfortable clothes.
- Please remember if your child has **any flu-like symptoms**, they need to stay at home until they are tested.

Many thanks, Little Side teachers 😊