

Contact your Beauty Consultant for Special Offers!



# *Color Me Beautiful*

Beauty Tips, Tricks and Miracles from  
**ADRIEN ARPEL, GALE HAYMAN BEVERLY HILLS,**  
and **COLOR ME BEAUTIFUL COSMETICS**

# COLOR ME BEAUTIFUL



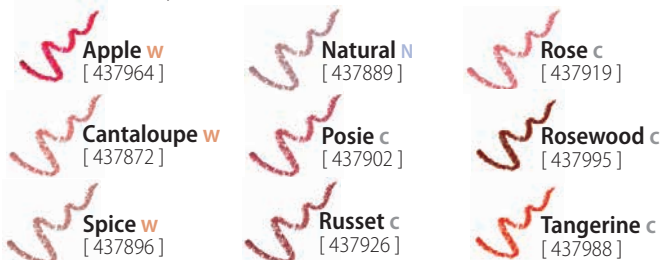
## COLOR RENEW LIPSTICK, 0.12 oz. (3.4g)

Color Renew Lipstick, with self-renewing color spheres. This buttery cream formula will continue to "renew" your lip color to give that "just applied" look for hours longer. Available in a beautiful new shade range with a luxurious lip conditioning formula.



## LIP PENCILS, 0.056 oz. (1.6g)

This luxurious formula prevents feathering and helps maintain lip color throughout the day.



# COLOR ME BEAUTIFUL

## CRÈME LIPSTICK, 0.12 oz. (3.4g)

Feels like heaven, wears like a dream. Creamy formula is enriched with aloe and Vitamin E in the most sensual colors while keeping lips at their healthiest.



**Mango Punch w**  
[ 432976 ]  
Warm Orangey Medium Pink



**Just Kissed c**  
[ 431726 ]  
Neutral Muted Pink



**Cinnamon w**  
[ CMLS51 ]  
Warm Red Brown



**Dusty Rose c**  
[ CMLS07 ]  
Cool Bright Pink



**Terra Cotta w**  
[ CMLS52 ]  
Deep Warm Brown



**Frosted Watermelon c**  
[ CMLS17 ]  
Cool Bright Hot Pink



**Tomato w**  
[ 433508 ]  
Rich Warm Red



**Soft Plum c**  
[ CMLS20 ]  
Cool Muted Plum



**Honeybee w**  
[ 433485 ]  
Golden Orange



**Plumberry c**  
[ 433256 ]  
Cool Berry



**Mocha N**  
[ 431733 ]  
Neutral Brownish Pink



**Perfect Plum c**  
[ 433522 ]  
Cool Deep Berry



**Mahogany N**  
[ 433515 ]  
Rich Burgundy



**Cerise c**  
[ 433546 ]  
Hot Pink



**Sueded Rose N**  
[ 433492 ]  
Muted Rose



Model is wearing Velvet Foundation Primer, Loose Mineral Foundation (Beige), Color Sense Mineral Blush (Cedar Rose), Classic Crème Lipstick (Red Carpet), Loose Mineral Eye Shadow (Tickled Pink and Silver Idol), Brush On Brow Powder (Brunette) and Super Wear Mascara (Ink).

## EXTREME SHEEN LIP GLOSS, 0.24 oz. (7ml)

Wear over lipstick or alone. Dazzling shades with a brilliant shine and luscious, light weight, non-sticky feel.



**Warm Sand w**  
[ 434062 ]



**Clear N**  
[ 434079 ]



**Dune w**  
[ 434024 ]



**Pink Shell c**  
[ 434031 ]



**Sunset w**  
[ 434017 ]



**Alfresco c**  
[ 434055 ]



**Mango w**  
[ 434000 ]



**Sangria c**  
[ 434048 ]

## EYE SHADOW/LIPSTICK BASE,

0.31 oz. (10g)

"Sets" powder eye shadow for longer wear and truer color. Also prevents creasing.

[ CMES00 ]



## Pro Tip! COLOR FIX,

0.1 fl. oz. (3ml)

Helps lipstick last hours longer. A single, refreshing application sets lipstick, prevents feathering or "bleeding" and keeps your lipstick from transferring. Makeup artist tip: Apply lip liner to outer contours of lips, fill in with lipstick. Apply Color Fix, holding lips apart and still for 30 seconds. Do not blot.

[ 431306 ]

# COLOR ME BEAUTIFUL



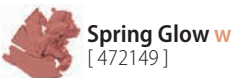
Model is wearing Moisture Complex Liquid Foundation (Naturale), Color Sense Mineral Blush (Plum Wine), Classic Crème Lipstick (Frosted Watermelon) and Extreme Sheen Lipgloss (Clear).

## COLOR SENSE MINERAL BLUSH, 4.8g

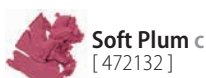
Creates a soft, healthy and radiant glow to flatter any skin tone. Vitamins A, C & E condition skin and provide antioxidant protection. Talc, paraben and fragrance free.



**Soft Rose c**  
[472125]



**Spring Glow w**  
[472149]



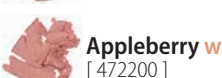
**Soft Plum c**  
[472132]



**All Spice w**  
[472156]



**Cedar Rose n**  
[472163]



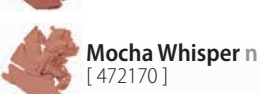
**Appleberry w**  
[472200]



**Plum Wine c**  
[472187]



**Brandy w**  
[472194]



**Mocha Whisper n**  
[472170]



## LOOSE MINERAL FOUNDATION, 9g

Experience hydration and brightening with our newest age-defying mineral foundation. Aloe, rice lipids and jojoba hydrate, while a White Sapphire Complex creates a soft focus effect leaving the skin looking radiant. Long lasting, buildable coverage erases lines, pores and imperfections.....\$26.50



**Light w**  
[439104]



**Beige c**  
[439111]



**Tan w**  
[439128]

## MOISTURE COMPLEX LIQUID FOUNDATION, 1 fl. oz. (30ml)

For normal/dry skin types. Dewy finish, medium coverage. Aloe, elastin and soluble collagen keeps skin moist and smooth.



**Sand**  
[CMLF01]  
*Pale*



**Sepia Beige**  
[435618]  
*Medium/Tan*



**Ivory**  
[CMLF50]  
*Light*



**Neutral Beige**  
[CMLF06]  
*Tan*



**Naturale**  
[CMLF31]  
*Tan/Deep tan*



**Almond**  
[435625]  
*Deep Tan*



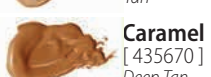
**Cool Beige**  
[CMLF02]  
*Medium w/Cool Undertones*



**Spice**  
[435663]  
*Tan*



**Warm Beige**  
[CMLF51]  
*Medium w/Warm Undertones*



**Caramel**  
[435670]  
*Deep Tan*



**Natural Beige**  
[435687]  
*Medium*

## MINERAL PRESSED POWDER, 0.48 oz. (13.5g)

Natural light-reflecting properties found in minerals create a soft diffused finish. Adjustable formula can be used either as a powder or foundation. Suitable for all skin types including sensitive. Oil free, talc free, fragrance free formula.



**Whisper Beige <sup>M</sup>**  
[243940]  
*Pale*



**Fawn Beige <sup>M</sup>**  
[243943]  
*Tan*



**Creamy Cameo <sup>M</sup>**  
[439487]  
*Medium/Light*



**Almond <sup>M</sup>**  
[439494]  
*Deep Tan*



**Sepia Beige <sup>M</sup>**  
[243944]  
*Medium/Tan*

<sup>M</sup> means Mineral Formula

# COLOR ME BEAUTIFUL

## MORNING LIGHT DIFFUSING CREAM FOUNDATION, 1.7 fl. oz. (50ml)

Contains a light diffusing complex to minimize the appearance of fine lines and wrinkles giving a flawless and natural finish. Hydrating and anti-aging formula incorporates avocado, aloe vera and Vitamins A, C and E.



## LOOSE SHIMMER POWDER, 1 oz. (28g)

This loose shimmer powder has all the oil-absorbing benefits of translucent powder. Makes the skin look radiant and flawless while adding a hint of color.



## TRANSLUCENT LOOSE POWDER, 1 oz. (28g)

Fine jet milled powder sets foundation and helps keep it fresh while also inhibiting oil-breakthrough. Jojoba Seed Oil and Vitamins C & E condition skin and provide antioxidant protection. Lightweight texture creates a soft, natural matte finish for all skin types.

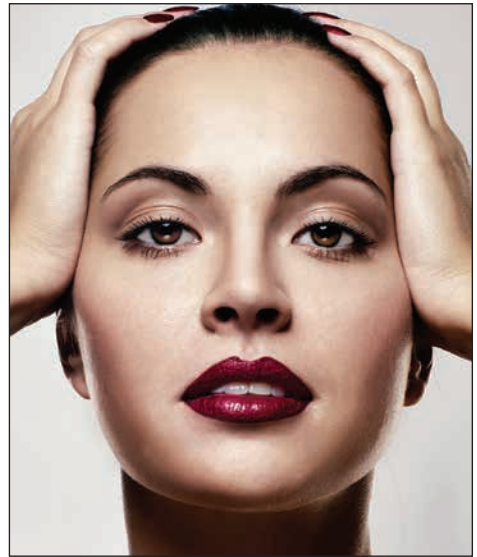


## UNDERGLOW ENHANCED LIGHT DIFFUSING GEL, 30mL (1 fl. oz.)

A light diffusing tinted gel to help soften fine lines and hide imperfections while giving the skin a youthful healthy glow. This "enhanced" formula incorporates a new tri-peptide resulting in firmer, smoother and more hydrated skin. Excellent for all skin types. Paraben and fragrance free. [ 439951 ]

## DUAL ENDED EYECARE STICK

Conveniently packaged with highly effective concealer on one end and wonderful emollient conditioning treatment on the other. [ 422069 ]



*Model is wearing Underglow Enhanced Light Diffusing Gel, Translucent Loose Powder (Natural), Specialty Blushing Powder (Gerbera), Color Renew Lipstick (Cranberry), Color Sense Single Eyeshadows (Rose Mauve and Frost).*

## MINT COLOR ADJUSTER, 30mL (1 fl. oz.)

Skin tone adjuster makes red or ruddy skin completely disappear as if by magic. Use under foundation or alone. [ CMCA01 ]



## CAMOUFLAGE CONCEALER, 0.25 oz. (7g)

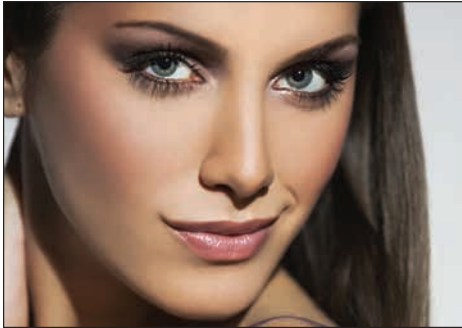
Make dark circles, minor imperfections and discolorations disappear with a touch. Won't crease or melt.



## CORRECTIVE CONCEALER WHEEL 0.86 oz. (24.6g)

Crème to powder formula with four different shades to conceal and correct flaws and shadows for a perfect skin tone. Age spots, redness, sallow complexion, freckles, dark undereye circles, scars etc., will disappear before your eyes! [ 422074 ]

# COLOR ME BEAUTIFUL



Model is wearing Underglow Enhanced Light Diffusing Gel, Translucent Loose Powder (Natural), Specialty Blushing Powder (Gerbera), Color Renew Lipstick (Rose Frost), Color Sense Single Eyeshadows (Plum Brown and Rose Mauve).



## VELVET FOUNDATION PRIMER, 1 fl. oz. (30ml)

This silky formula prepares the face for makeup, refining the skin's texture to produce a flawless finish that lasts all day. Enriched with antioxidants to protect and soothe skin as well as soft focus light reflecting properties to add a luminous quality. [ 420058 ]


## SPECIALTY BLUSHING POWDER, 0.3 oz. (8.5g)

Embossed pressed powders in a variety of shades and designs.



**Exotica Blushing Powder**  
[ 471906 ]  
*Warm Coral and Terra Cotta*



**Sun Bronzer**   
[ 247365 ]  
*Warm Gold*



**Gerbera Blushing Powder**  
[ 471876 ]  
*Warm Pinks*



**Lotus Flower Blushing Powder**   
[ 471890 ]  
*Cool Mulberry*

 means Mineral Formula



## EYELINE SEALER, 0.05 oz.

Make your favorite eye shadow your new favorite eye liner. It'll add a vibrant pop of color to your everyday look. [ 482506 ]

## LOOSE MINERAL EYE SHADOWS, 0.05 oz. (1.5g)

These high pigmented powders accent the eyes for a dramatic look. The mineral dust shadows can be used wet or dry for all over eye color or as a liner.



**Pink A Boo** c  
[ 449707 ]



**Just Peachy** w  
[ 449717 ]



**Ticked Pink** c  
[ 449721 ]



**Gold Rush** w  
[ 449790 ]



**Grape Crush** c  
[ 449769 ]



**Pretty Penny** w  
[ 449745 ]



**Silver Idol** c  
[ 449752 ]



**Bronze Leaf** w  
[ 449783 ]



**Voodoo** c  
[ 449738 ]



**Chocolate Ice** w  
[ 449776 ]

## EYE SHADOW TRIOS, 0.1 oz. (3g)

Terrific eye shadow pots with inventive combinations of multiple shades.



**Mocha Latte** w  
[ 449318 ]



**Black Swan** c  
[ 449608 ]



**Green with Envy** w  
[ 449356 ]




**Crushed Ruby** c  
[ 449332 ]



**Sandy Beach** w   
[ 449219 ]



**Island Palm** n   
[ 449226 ]



**Rosy Outlook** n  
[ 449615 ]



**Chocolate Cream Matte** n   
[ 449486 ]

 means Mineral Formula



**Lusty Lilac** n  
[ 449622 ]

## COLOR SENSE EYE SHADOW TRIOS, 0.12 oz. (3.4g)

Color Sense Eye Shadow Trios combine expertly coordinated shades in one convenient portable palette. Pearl, shimmer and matte textures merge to define eyes in a whole new light. A wardrobe of endless possibilities.

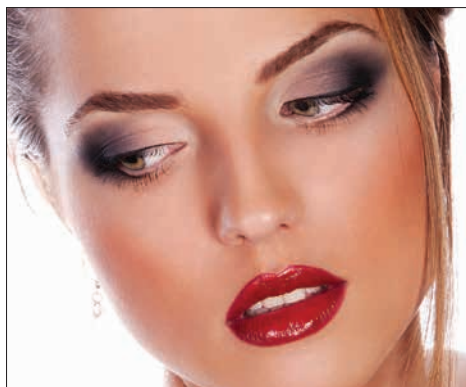
  
**Spring Splendor** w [ 449813 ]

  
**Summer Shimmer** c [ 449837 ]

  
**Autumn Glow** [ 449806 ]

  
**Winter Radiance** [ 449820 ]

# COLOR ME BEAUTIFUL



## COLOR SENSE SINGLE EYE SHADOWS,

0.7 oz. (2g)

Luscious eye shadow singles formulated for smooth application with a rich, long wearing pigment

- |   |   |
|---|---|
|  <b>Adobe w</b><br>[ 449455 ]           |  <b>Blue Grey c</b><br>[ 449578 ]    |
|  <b>Amethyst w</b><br>[ 449585 ]        |  <b>Black Brown n</b><br>[ 449561 ]  |
|  <b>Ballerina Pink w</b><br>[ 449394 ]  |  <b>Cotton Candy c</b><br>[ 449516 ] |
|  <b>Butter Cream w</b><br>[ 449509 ]    |  <b>Frost c</b><br>[ 449363 ]        |
|  <b>Chestnut w</b><br>[ 449448 ]        |  <b>Gleam c</b><br>[ 449493 ]        |
|  <b>Malted Milk w</b><br>[ 449523 ]    |  <b>Grey Frost c</b><br>[ 449554 ]  |
|  <b>Peach Glow w</b><br>[ 449424 ]    |  <b>Lilac c</b><br>[ 449547 ]      |
|  <b>Tuscany Olive w</b><br>[ 449431 ] |  <b>Pine c</b><br>[ 449479 ]       |
|  <b>Pewter n</b><br>[ 449370 ]        |  <b>Plum Brown c</b><br>[ 449462 ] |
|  <b>Teal Blue n</b><br>[ 449530 ]     |  <b>Rose Mauve c</b><br>[ 449387 ] |
|   |  <b>Sterling c</b><br>[ 449400 ]   |

## EYE SHADOW/LIPSTICK BASE,

0.31 oz. (10g)











"Sets" powder eye shadow for longer wear and truer color. Also prevents creasing. [ CMES00 ]



## CHROMA SOFT EYE PENCILS,

0.056 oz. (1.6g)

Soft and creamy formula glides onto the delicate eye area and is easily blended to create a variety of effects from bold and smoldering to soft and natural.

- |  |  |
|--|--|
|  <b>Amethyst</b><br>[ 483336 ]  |  <b>Granite</b><br>[ 483299 ]       |
|  <b>Aubergine</b><br>[ 483305 ] |  <b>Marine</b><br>[ 483282 ]        |
|  <b>Brown</b><br>[ 483275 ]     |  <b>Midnight Blue</b><br>[ 483404 ] |
|  <b>Coffee</b><br>[ 483268 ]    |  <b>Moss</b><br>[ 483343 ]          |
|  <b>Emerald</b><br>[ 483480 ]   |  <b>Teal</b><br>[ 483329 ]          |

## DUAL SHARPENER

Dual sharpener with flip top lid, fitted with two sizes. Perfect for your Chroma Soft Eye Pencil and Lip Pencils. [ 427194 ]




## WATERPROOF AUTOMATIC EYELINERS, 2.5g

A long lasting waterproof automatic eye liner that stays put all day long. Easy to apply with a smudge tip applicator to achieve desired effect. Retractable – Just twist pencil up or down to achieve desired length.

- |   |   |
|---|---|
|  <b>Black Magic</b><br>[ 483350 ]    |  <b>Perfect Gray</b><br>[ 483374 ] |
|  <b>Dark Chocolate</b><br>[ 483381 ] |  <b>Rich Navy</b><br>[ 483367 ]    |

## SENSITIVE EYES MASCARA, 0.35 oz. (10g)

Water-based formula. No clumping, no smudging. Lengthens, separates and darkens lashes. Hypoallergenic and fragrance free botanical formula for the most sensitive eyes.

- |  |   |
|--|---|
|  <b>Brown</b><br>[ 440124 ] |  <b>Navy</b><br>[ 440131 ] |
|  <b>Black</b><br>[ 440148 ] |   |

# COLOR ME BEAUTIFUL



*Model is wearing Loose Mineral Foundation (Tan), Color Sense Mineral Blush (Soft Plum), Dual Ended Eyecare Stick, Eye Shadow Trio (Crushed Ruby), Chroma Soft Eye Pencil (Aubergine), Sensitive Eyes Mascara (Black), Brow Last (Dark Brown), Brush on Brow Powder (Brunette), and Brow Fix.*

## SUPER WEAR MASCARA, 0.25 oz. (7.08g)

Extreme wear, color rich formula delivers hyper-real lash curling while resisting flaking or smudging. Binds color to lashes and lasts up to 24 hours without reapplying. Vitamin E conditions lashes. Paraben and fragrance free. \$16.50



**Ink (Black)**  
[ 440162 ]

## BRUSH ON BROW POWDER, 0.1 oz. (3g)

Achieve an easy and natural brow enhancement. Use included precision brow brush and long wearing powder for the perfect brow. Fill in gaps, shape and lift to add polish and style!

**Blonde**  
[ 412428 ]

**Haze**  
[ 412435 ]

**Auburn**  
[ 412404 ]

**Brunette**  
[ 412411 ]

**Smoke**  
[ 412381 ]

### SHADE SELECTION KEY

Warm women (typically those with red or gold highlights in their hair) look best in makeup color designation (W). Cool women (typically those without red or gold in their hair) look best in makeup color designation (C).

## WATERPROOF AUTOMATIC EYEBROW PENCILS, 0.09 oz. (2.5g)

In three natural-looking shades, these pencils really do last and last. The brow brush tip is perfect for soft smudging and positioning into a perfectly arched brow.



**Taupe**  
[ 412466 ]

**Light Brown**  
[ 412473 ]

**Dark Brown**  
[ 412480 ]

## BROW FIX, 0.28 oz. (8g)

Tame unruly brows, for a sleek polished look. Also "sets" brow powder for longer wear. [ CMBF00 ].

## STIFF BROW BRUSH

Applies color to the brow. Use to define or add "fill" to brows with precision. [14762].





# COLOR ME BEAUTIFUL

## WARDROBE WALLET with Free Lipstick

These handy checkbook size wallets hold 48 swatches in your seasonal color palette to help make shopping a breeze! Each wardrobe wallet is sure to complement your season and includes a free lipstick from your seasonal palette!

### Four Season Wardrobe

If you'd like to know your color palette, use the descriptions below.

For an in-depth color analysis contact your local image consultant. Here is a quick check to see which swatch palette you are likely to use.



**Autumn (Warm and Deep)** you look beautiful in bronze and copper jewelry, your deeper hair color includes red, auburn, red-dish brown, golden honey. [ 12075 ]

**Spring (Warm and Light)** you look great in gold jewelry, you have a lighter skin tone with gold or red highlights in blonde or light to medium brown hair. [ 12076 ]

**Summer (Cool and Light)** you look stunning in silver or platinum jewelry, have a lighter skin tone with an overall muted appearance, ash blonde, ash brown, or silver grey hair (no red or gold highlights). [ 12077 ]

**Winter (Cool and Deep)** you look amazing in silver or pewter jewelry, have a deeper skin tone, hair colors for winters can include black with blue tone highlights, deep brown, or salt and pepper. [ 12078 ]



## DELUXE WARDROBE WALLET AND COLOR ASSORTMENTS

An incredible value set, including a seasonal swatch wallet (\$40 value) with 48 of your perfect clothing swatches neatly contained in a stylish wallet, convenient to carry on every shopping spree. Also comes with your season's perfect blush compact, two eyeshadows and a crème lipstick. Assured to be your best shades based on your hair color.



### WINTER COLOR COLLECTION (for black and silver hair shades)

Winter Deluxe Palette and Color Kit  
[ 78168 ]



### SPRING COLOR COLLECTION (for golden and strawberry blondes)

Spring Deluxe Palette and Color Kit  
[ 78166 ]



### SUMMER COLOR COLLECTION (for ash and champagne blondes)

Summer Deluxe Palette and Color Kit  
[ 78167 ]



### AUTUMN COLOR COLLECTION (for redheads and golden brunettes)

Autumn Deluxe Palette and Color Kit  
[ 78165 ]

# COLOR ME BEAUTIFUL



## KABUKI BRUSH

Perfect for applying Color Sense Mineral Blush or Mineral Pressed Powder for a stunning airbrushed look. [ 147436 ]

## BLACK FEATHER PUFF

Delicate maribou feather puff is a glamorous way to apply shimmers and bronzers. [ 80247400 ]

## ¾" OVAL FOUNDATION BRUSH

The secret to flawless foundation application. The non-absorbing synthetic bristles offer control and perfect coverage without wasting product. [ 14759 ]

## JUMBO POWDER DOME

High quality, designed for seamless application of powder or bronzer. [ 14781 ]

## ANGLED BLUSH BRUSH

This soft angle brush lays down a natural looking-looking flush of color to cheeks. [ 14782 ]

## DUAL ENDED DETAIL FIRM EYE SHADOW BRUSH

This double-ended brush makes for perfect eye shadow or line application every time. Use one end as an eye liner brush paired with Loose Mineral Eyeshadow and the fluffy end to pack on color and blend. [ 14784 ]

## EYE SHADOW BLENDING BRUSH

This blending and contouring brush makes adding color, dimension, and definition to the eyes absolutely effortless. [ 14787 ]

## BLACK RETRACTABLE LIP BRUSH

This clever essential is designed to provide flawless application of all lip products. [ 14764 ]

## 10 PC PROFESSIONAL BRUSH SET

Italian Badger hair. Polished chrome ferrules and mahogany handles are designed to elevate makeup application to an art form. [14765]

## 12 PC MAKEUP BRUSH SET

This elegant brush set will help you to achieve high-definition results at a professional caliber. [14780]

## MINERAL POWDER BRUSH

Fluffy bristles give powder, bronzer or blush a flawless, professional finish. [ 14785 ]

## PRECISION EYELINER BRUSH

The perfect tool to line the eyes with your favorite liquid or gel eyeliner. Try using it with the eyeliner sealer paired with our loose mineral eye shadows. [ 14788 ]

## STIFF BROW BRUSH

Used with Brush On Brow Powder for natural, finished brows. Use to define or fill bare spots to with "Makeup Artist" precision. [ 14762 ]

## CONCEALER BRUSH

Created for use with Camouflage Concealer, using non-absorptive synthetic bristles, for precision and lasting coverage of dark circles or blemishes. [ 14789 ]

## NAIL LACQUER, 0.5 oz. ( 14.8mL)



**Main Squeeze**  
[ 462119 ]

**Smokin' Hot**  
[ 462171 ]

**Drop Dead Red**  
[ 462157 ]

**Stiletto**  
[ 462133 ]

**After Hours**  
[ 462164 ]

**Ever After**  
[ 462126 ]

**Nude Scene**  
[ 462140 ]

**Duo Act**  
*Base/Top Coat*  
[ 462188 ]

Speak With Your Beauty Consultant For More Information

# PROOF POSITIVE



## CLEANSERS

### FOAMING CLEANSER, 6 fl. oz. (180ml) (For Normal to Oily Skin)

This purifying cleanser is formulated with radical anti-oxidant acai berry and skin refining salicylic acid. Citrus and witch hazel extracts freshen and promote healthy skin. Fragrance, paraben and sulfate free. [ 421215 ]

### HONEY CLEANSING MILK, with Clover Blossom Extract, 6 fl. oz. (180ml) (For Dry Skin)

This light, creamy emulsion combines the powerful emollient properties of honey, lecithin and B family vitamins to soften and quench the thirst of dry, parched skin. A special blend of yarrow extract, birch leaf and horsetail extract tone, leaving skin naturally soft and supple. [ 424070 ]

### ONE STEP CLEANSING WATER FOR FACE & EYES, 6 fl. oz. (117ml) (For All Skin Types)

Replaces cleanser, toner and eye makeup remover in one easy step. Great for travel or every day use. [ 421932 ]

### MICRO-DERM CLEANSER, 4 oz. (114g) (For All Skin Types)

This cleanser and exfoliator contain the same crystals used in professional micro-dermabrasion treatments. The moisturizing and nourishing formula contains phospholipids to improve hydration and is enriched with Vitamins A, C and E to help repair and maintain healthy skin. [ 424025 ]

## TONERS

### ALOE TONER BLUE, 6 fl. oz. (180ml) (For Normal to Oily Skin)

This very gentle alcohol free rinse, tones, clarifies, and refreshes the most sensitive skin. Aloe, rosewater and soy protein nurture and maintain the skin's natural moisture balance. Witch Hazel gently refines pores. For dry and sensitive skin types. [ 424049 ]

### REVITALIZING TONER, 6 fl. oz. (180ml) (For Normal to Oily Skin)

A revolutionary toner combining the benefits of Aloe Barbadensis gel, Sodium PCA, herbal extracts and glycolic acid. Great for blemished, discolored and/or flaky skin. [ 424056 ]

## MOISTURIZERS FOR FACE AND EYES

Protect your skin's future. Daily Defense SPF15 not only shields against burn-causing UVB rays but also protects against age-inducing UVA rays. It's not just serious sun defense it also delivers a daily dose of vitamins, botanicals and essential oils to keep skin looking young and healthy. Comes in three skin specific formulas, Oil Free, Light and Rich.

### DAILY DEFENSE LIGHT - SPF15, 1.6 fl. oz. (47ml) (For Normal to Oily Skin)

Formulated for combination skin, extreme sun protection and hydration is just a pump away. [ 221037 ]

### DAILY DEFENSE OIL-FREE - SPF15, 1.6 fl. oz. (47ml) (For Oily Skin)

Perfect for oily skin, DD Oil Free protects and hydrates while controlling oil production. [ 421277 ]

### DAILY DEFENSE RICH - SPF15, 1.6 fl. oz. (47ml) (For Dry Skin)

Dry skin is hydrated and softened with this luscious crème formula, that protects while it hydrates and softens. [ 421246 ]

### TRIPLE ACTION EYE CREAM, 0.5 oz. (14g)

New generation triple action formula works simultaneously on puffiness, dark circles, and fine lines and wrinkles. Firms, revives and soothes the delicate skin around the eyes. [ 421253 ]

### EYE LIFT FIRMING GEL, 0.5 oz. (14g)

Lifts, smoothes and reduces puffiness around the eyes. [ 421789 ]

### 24/7 MOISTURE COMPLEX, 4 oz. (113g)

This supercharged, non-greasy anti-aging treatment contains alpha lipolic acid, phospholipids, Vitamins A and E, ceramide-3, oat beta glucan, green tea and soybean oil to name a few. Leaves the skin smoother, softer, more even-toned and youthful. Great for treating fine lines and wrinkles, under-eye bags and puffiness, enlarged pores, acne scars and sallow or dull skin. [ 421925 ]

# SPECIALTY TREATMENTS

## REVITALIZING SCRUB/MASQUE, WITH GLYCOLIC ACID, 2 oz (57g)

Specially designed as a dual-purpose product, this creamy combination of almonds and peanuts gently buffs away dead surface cells and rejuvenates skin. Honey and clay penetrate deeply to help eliminate impurities and blackheads, while five botanical extracts (bilberry, sugar cane, sugar maple, orange extracts and lemon extract) provide a natural source of Alpha Hydroxy Acids to promote a smoother, younger appearance. [ 424094 ]

## REVITALIZING LOTION, WITH GLYCOLIC ACID, 2 fl. oz. (60ml)

This light and versatile formula contains Vitamins A and D and antioxidant Vitamin E to nurture and protect the skin, while creating a more youthful, line free appearance. Pine cone, lemon and lemon extracts leaves the skin softened, balanced and renewed. Paraben and fragrance free. [ 424087 ]

## MULTI-ACTION BOOSTER, 1 oz. (30ml)

Time-released Vitamins A & E, algae extract and minerals continuously nourish and oxygenate, while hylauronic acid attracts many thousand times its molecular weight in water to deeply moisturize the skin. All skin types will greatly benefit from this non-greasy, highly concentrated revitalizing treatment. [ 421307 ]

## C-PLEX TIME CAPSULES, (30 Capsules)

This silky formula of Vitamin C gets a boost from its partner, Vitamin E. This power-packed antioxidant duo with skin moisturizing properties, fights collagen breakdown and increases its production to ward off the formation of lines and wrinkles. Vitamin C strengthens the skin, reduces irritation, redness, sensitivity and sun spots. The formula is encapsulated to ensure maximum effectiveness and stability, using a brand new V-Gel™ technology. Paraben and fragrance free. [ 421819 ]

## BOVANNAH, 2.0 oz. (155g)

Clinically tested, doctor-recommended therapeutic moisturizer that protects and heals chapped, rough skin. [ 120 ]

## ATLANTIS WHIPPED BODY SOUFFLE, 9 oz. (255g)

Pamper your skin with this luscious nourishing and conditioning souffle infused with marine derived ingredients. Jojoba, shea butter and aloe hydrate and saturate the skin with moisture while sea kelp, algae, elastin and Vitamin E work together for smoother, younger looking skin. [ 425107 ]

## ATLANTIS MINERAL SOAK, 16 oz. (453g)

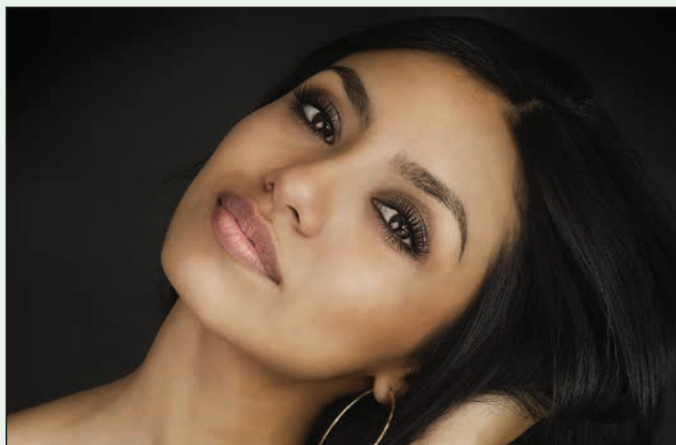
Healthy skin, physical and mental well-being is dependent on the correct sodium and potassium fluid balance in the body. Dead Sea salts contain 10 times more minerals than ordinary sea salt. These minerals assist in cleansing, detoxifying and restoring a healthy status quo of the body, especially the skin and muscles by helping to draw toxins out of the body to the skin's surface. Relaxing in the soothing aquamarine, mineral-rich water will improve a feeling of relaxation, health and well-being. Eucalyptus and peppermint oil infuse their antiseptic properties and help soothe achy muscles and joints while cooling and stimulating mind and body. [ 425114 ]

## ATLANTIS BODY WASH, 9 oz. (266ml)

Lose yourself in Atlantis while Dead Sea salts and jojoba exfoliate, and marine extracts and shea butter hydrate, revitalize and nourish the skin, while helping to protect against moisture loss. These mineral rich ingredients work together resulting in smoother, softer and suppler skin. These mineral-rich ingredients work together resulting in smoother, softer more supple skin. [ 425121 ]

## SMOOTH SHAVE, 6 fl. oz. (177ml)

Reduces the appearance of unattractive razor burn, razor bumps, ingrown hairs, and redness from shaving, waxing and electrolysis. For men and women's face, necks, back of necks, and women's legs, underarms, and bikini lines. [427033]



*Regardless of coloring and features beauty starts with beautiful skin. Proof Positive delivers smoother, softer and clearer skin with every use.*

# ADRIEN ARPEL

## Papaya Skin Renewal Collection

In the time it takes to cleanse and moisturize you can get more radiant, smoother skin with the gentle action of papaya enzymes. Papayas contain an enzyme called papain that is known as a digestive enzyme but also effectively eliminates dead cells from surface skin while it stimulates collagen formation.



### **Papaya Enzyme Cleanser (for all skin types)** 8 fl. oz. (236ml)

Foams on contact to cleanse and smooth skin. Enriched with exfoliating papaya enzymes, this gentle foam completely removes debris on the surface and deep within the pores. Deliciously and naturally scented. Paraben and fragrance free. [ 22-04036 ]

### **Papaya Enzyme Toner (for all skin types)** 6 oz. (100g)

Freshens, softens and prevents dehydration of the complexion while it tones and prepares the skin for moisturizer. Your skin will become brighter and more luminous with regular use. Deliciously and naturally scented. Paraben, alcohol and fragrance free. [ 22-04041 ]

### **Papaya Scrub (for all skin types) 4 oz. (100g)**

Combines papaya enzymes and gentle exfoliating beads for a dual and highly effective sloughing treatment. Uncover fresh and radiant skin. Texture is visibly improved and skin looks radiant and glowing. Deliciously and naturally scented. Paraben and fragrance free. [22-04044]

### **Papaya Enzymatic Resurfacing Masque (for all skin types) 2 oz. (56g)**

Luxuriate in a smooth gel/crème texture with double-dose enzymatic action. Provides a gentle, yet effective exfoliation treatment with no scrubbing or redness. Contains 100% natural papaya and pumpkin enzymes. Deliciously and naturally scented. Paraben and fragrance free. [22-04045]

## Swiss Skincare Institute (Advanced Anti-aging Formula)

*The remarkable Swiss Skincare Institute formulas are uniquely suited to the challenges of mature skin, combining the essential nutrients to plump, soften and smooth lines while protecting contours of the skin. Exclusive Edelweiss plant proteins protect skin from the deleterious effects of our changing environment. Your mature skin will appear more youthful, vibrant and smooth with every application.*

### **Swiss Formula Day Crème (for mature skin)** 2 oz. (57g)

Breakfast for the skin. Collagen-based protein day crème enriched with 12 essential vitamins and nutrients to nourish, soften fine lines and hydrate the skin. Formulated with the rare Edelweiss extract, grown only in the Swiss Alps and laboratory tested for its unique restorative properties. Paraben and fragrance free. [ 22-04049 ]



### **Swiss Collagen Hydrating Serum (for mature skin)** 1 fl. oz. (30ml)

This unique anti-wrinkle treatment is a highly concentrated nutritive complex of soluble collagen to diminish fine lines and wrinkles and improve skin's elasticity. Botanical extracts give a super power boost to aging skin. Paraben and fragrance free. [ 22-04053 ]

## Rejuvenate with Alpha Hydroxy

*Alpha Hydroxy acids work by speeding up the cycle of skin cell replenishment, replacing the dead surface layer of the skin, with the more youthful layers, beneath. With the use of Alpha Hydroxy acid products, your skin will glow and appear more youthful, rejuvenated and even-toned within 30 days of use.*

### **Skin Correction Complex (for all skin types)** 2oz. (56g)

Alpha Hydroxy blend created to provide all you need for more youthful looking skin. Day crème, night crème, moisturizer and wrinkle crème in one easy-to-use product. Paraben free. [ 22-07100 ]

### **Skin Correction Body Treatment Crème (for all skin types) 8 fl. oz. (223ml)**

This Alpha Hydroxy blend provides 4 body treatments in 1. With a single crème, exfoliate, firm, smooth and hydrate. Nourishes and protects and revitalizes aging skin. Rapidly absorbed with a delicious fragrance. Paraben free. [ 22-07810 ]



### **Bio Cellular Night Crème (for normal to dry skin) 2.75 oz. (78g)**

Night time is the right time for intensive skin treatments. For use when skin is in repair mode, this crème contains

Alpha Hydroxy Complex and freeze dried protein. Wake up to beautiful hydration as well as a younger, clearer, brighter, smoother-looking skin. Paraben Free. [ 22-07711 ]

### **Bio Cellular Night Eye Gelee 0.5 oz. (14g)**

While you sleep, this delicate, nutrient-packed eye gelee permeates the skin around the eyes, gently softening and smoothing lines. Wake up to a beautifully hydrated eye area with reduced puffiness and dark circles. [ 22-07721 ]

# ADRIEN ARPEL

## AlphaCeuticals Beauty System

Step up to extraordinary results with this four step Alpha and Hydroxy Acid beauty system.



### AlphaCeutical Face Wash (all skin types) 8 fl. oz. (236 ml)

#### Step 1

Friendly fruit acids, extracts of kiwi, lime, lemongrass and Aloe Vera Gel combined in this powerful purifying wash, work together to rinse away impurities, detoxify and protect. Paraben free. [ 22-04801 ]

### AlphaCeutical Face Toner (all skin types) 8 fl. oz. (236 ml)

#### Step 2

Used after AlphaCeuticals Face Wash, the AlphaCeutical Face Toner will balance, refresh and normalize the skin. Natural fruit extracts of kiwi, key lime and lemon rinse deep into pores to sweep away any remaining excess debris of makeup or pollutants. Paraben free. [ 22-04802 ]

### AlphaCeutical Serum (all skin types) 1.7fl oz. (50ml)

#### Step 3

This unique formula contains Glycolic Acid derived from natural sugar cane. Available in four different strengths, this serum should be used in a "step up" program starting with Serum #5, which should be used for the first two months. Skin will begin to feel softer, fine lines and skin discolorations will diminish, and skin will become smoother, clearer and younger-looking with continued use. Paraben free.

#### # 5

Five percent glycolic serum for beginner level glycolic serum users. [ 22-04803 ]

#### # 10

Ten percent glycolic serum follows the #5 (or five percent) level glycolic serum. [ 22-04804 ]

#### # 15

Fifteen percent glycolic serum follows the #10 (or ten percent) level glycolic serum. [ 22-04805 ]

#### # 20

Twenty percent glycolic serum follows the #15 (or fifteen percent) level glycolic serum. [ 22-04806 ]

*(Failure to follow the suggested levels in the use of AlphaCeutical serums could result in irritation of the skin.)*

*#20 may not be sold in Canada.)*

### AlphaCeutical Moisture Cream (all skin types) 2.5fl oz. (74ml)

#### Step 4

Designed specifically for use with the AlphaCeutical System, this luxurious cream is used after the AlphaCeutical Serum Application. Packed with Vitamins and Lactic Acid for optimum benefits. AlphaCeuticals Moisture Cream leaves your skin beautifully hydrated day and night. Paraben Free. [ 22-04807 ]

## Wrinkle Warriors (Anti-aging Peptides)

As we age, natural collagen is depleted by age and environmental factors, including sunlight, and it is not fully replaced. As a result, smooth skin slowly becomes thinner and more wrinkled over time. As collagen deteriorates, it produces certain peptides. Research shows that these peptides send a "message" to your skin that it has lost collagen and needs to generate more. Peptide creams mimic this action, stimulating your skin to produce more collagen, for a more youthful appearance.



### High Definition Perfecting Complex 1 oz. (30g)

Show off your skin in high definition. This powerful tri-peptide serum provides an intense anti-wrinkle treatment, evens skin tone and helps to protect the skin from future damage while reducing the appearance of age spots. Paraben and fragrance free. [ 22-04066 ]

### Daytime Wrinkle Minimizer (for mature skin) 1 oz. (30g)

This luxurious cream contains 10% Argireline peptide, which has been clinically proven to reduce the depth of expression lines by up to 32% in 28 days. Contains aloe, Vitamins A&E as well as beneficial botanical extracts, which hydrate and soften the skin. Paraben and fragrance free. [ 22-04055 ]

### Moroccan Miracle Night Crème (for dry aging skin) 2oz. (57g)

A highly emollient night treatment featuring Argan Oil, a precious ingredient extracted from the nut of the Argan Tree exclusively native to Morocco. This "liquid gold" is combined with Acetyl Hexapeptide, clinically proven to reduce wrinkle depth up to 30% in 30 days. Skin will become plumper, softer, firmer and younger looking with continued use. Paraben and fragrance free. [ 22-04075 ]



# ADRIEN ARPEL

## Vitamins For The Skin

Your body delivers only a small percentage of your vitamins to your skin. No matter how much you ingest, there's no way to send them straight to your crow's feet or brown spots. The solution: apply vitamins topically to deliver maximum benefits — everything from improving texture and tone to fading age spots.



### Vitamin C

#### **C-Source (all skin types) (30 capsules)**

Encapsulated to protect the effectiveness of nature's most fragile vitamin, C, this silky fresh vitamin C capsule is supercharged with Vitamin E—creating a powerhouse anti-oxidant blend. While strengthening the skin it reduces irritation, redness, sensitivity and fades age spots for a more even-toned complexion. Fragrance free. [ 22-04001 ]

### Vitamin A

#### **Retinol-PM Serum (all skin types except sensitive) 1 fl. oz. (30ml)**

Nano-encapsulated ensures stability and aid in absorption. It prevents premature aging of the skin, stimulates regeneration and improves elasticity and appearance of skin. [ 22-04077 ]



### Multi-Vitamin Complex

#### **Vitasome Energizing Complex (for normal to dry skin) 1 fl. oz. (30ml)**

Vitasome-enhanced revitalizing serum with hyaluronic acid and a natural herbal blend restores and maintains skin's youthful appearance. Time-released multi-vitamin complex continuously combats free radicals; a liposome complex oxygenates and nourishes while algae and seaweed extracts strengthen the skin. Paraben and fragrance free. [ 22-04015 ]

## Ceramides

Ceramides are the sponges of the skin, helping to attract and retain moisture that protects and keeps the skin looking youthful. Ceramide levels decrease as we get older. By age 60, we have lost so much ceramide that the upper layer of the skin is 30% thinner.

#### **Cellular PPRx (for dry aging skin) 2oz. (60g)**

Replenish your ceramides with this super hydrating solution for mature skin. Visibly and dramatically addresses thin and sagging skin with a unique, highly effective vegetable-based ceramide, the result of 5 years of advanced clinical research. Adrien Arpel is proud to be the first skincare brand in the U.S.A to launch this ingredient blend. Paraben and fragrance free. [ 22-04067 ]

## Fade Age Spots and Uneven Skin Tone

Age spots, liver spots and uneven skin tone are the result of overexposure to the sun as your body tries to fend off UV rays that can damage your glowing skin.

#### **Skin Illuminator Brightener Serum 1 fl. oz. (30 ml)**

Erases age spots, illuminates and energizes the skin with marine-based extracts, Vitamin C and the highly effective matsutake mushroom extract. Paraben and fragrance free. [ 22-04070 ]

## Masques

Masques have been shown to increase circulation and provide key nutrients to the skin for maximum treatment for everything from dryness to acne.

#### **Hydrating Gel Masque (for all skin types)**

##### **4 oz. (113g)**

A refreshing and hydrating gel masque that helps restore critical moisture to dry skin. This special formula contains soothing botanicals and Vitamins A, C and E. Use chilled for a highly effective and refreshingly hydrating beauty treatment. Paraben and fragrance free. [ 22-04030 ]



#### **Marine Mint Masque (for oily skin) 2 fl. oz. (60ml)**

Sea salt and clay combined in this powerful deep cleaning masque removes oil and impurities from deep within the skin. Salicylic acid works with sulfur and spearmint oil to tighten the skin. Paraben and fragrance free. [ 22-04050 ]

# ADRIEN ARPEL



## Eye Treatments

*The skin around the eyes does not naturally produce oils, thus can be one of the driest areas of your face.*

### **Eye Perfection Crème (all skin types)** 1 fl. oz. (30ml)

You won't believe your eyes when this triple action eye crème effectively eliminates puffiness, dark circles and wrinkles. Moderate in price, but priceless in performance. Paraben and fragrance free. [ 22-04071 ]

### **Hydra-lux Eye Masque (all skin types)** 1 fl. oz. (30ml)

A light-textured, greaseless eye masque formulated with a new generation of peptides and ceramides to aid collagen synthesis and to reduce skin damage, smooth fine lines, wrinkles and crow's feet. Paraben free. [ 22-04054 ]

### **Dual Ended Eyecare Stick (all skin types)**

Never experience dryness around the eyes again. This powerhouse duo in one convenient stick, offers highly emollient line smoothing on one end, and an easy to use cover stick on the other. Paraben and fragrance free. [ 22-04072 ]

## Exfoliators

*Regular, weekly exfoliation keeps skin looking fresh and youthful.*

### **Vegetable Peel Off (combination skin)** 2 oz. (56g)

Vegetable enzymes enrich this mild sloughing crème which gently "peels off" top layers of dry, dead skin as well as unattractive patches on face and neck. Leaves skin smooth and soft. Paraben and fragrance free. [ 22-07401 ]

### **Honey Almond Scrub (combination skin)** 5 oz. (141g)

The scent will tempt the taste buds, but this delectable concoction is strictly for the skin. We've used pure honey, which has been revered for centuries as the ultimate beautifier and added lots of real minced almonds in a creamy paste. Blended together for optimum deep pore cleaning. Paraben free. [ 22-06531 ]

## Daily Rituals Normal to Oily

*Oily skin types look shiny and feel greasy to the touch. The texture of oily skin is generally coarse and somewhat thick with large pores. Oily skin looks normal after initial washing; but by mid-day, looks shiny. For an oily skin solution that changes skin behavior try the Adrien Arpel Normal to Oily skin regime.*

### **Skin Detoxifying Cleanser (for oily and acne prone skin)** 8 fl. oz. (236ml)

This purifying cleanser freshens and promotes healthy balanced skin. Formulated with citrus, acai berry and skin refining salicylic acid, for a naturally balanced complexion. Paraben and fragrance free. [ 22-04079 ]

### **Detoxifying Toner (for oily and acne prone skin)** 8 fl. oz. (236ml)

Oil-control blotting tonic formulated with sea mineral extracts to open clogged pores. Paraben and fragrance free. [ 22-06720 ]

### **Daily Defense Oil Free (for oily and acne prone skin)** 1.7fl oz. (50ml)

This ultra-light, oil free moisturizer with natural oil-absorbing starch, herbal extracts and SPF 15, helps control oil and shine. Leaves skin feeling smooth and toned while looking matte and flawless. Paraben free. [ 22-04076 ]



## Normal to Dry

*Normal to Dry skin is usually tight and possibly even flaky. Pores are almost unnoticeable. People with dry skin often deal with more surface wrinkles and fine lines than those with combination or oily skin, due to dehydration.*

### **Coconut Cleanser (for mature or dry skin)** 4 fl. oz. (118ml)

With a scent like a tropical breeze, this one-minute makeup melt gently dissolves makeup and daily grime while softening with the soothing properties of natural coconut. Paraben free. [ 22-06101 ]



# ADRIEN ARPEL

Model is wearing  
Real Silk Bronzing  
Kaleidoscope.



## **Oxygenating Toner (for mature skin)** 8 fl. oz. (236ml)

Inigorating freshener rinses away the last traces of cleanser, micro-exfoliates sluggish cells and stimulates circulation with oxygen-rich botanicals. Alcohol-free formula, enriched with refreshing aromatic extracts and humectants, provides a boost to dull, dehydrated skin. Paraben and fragrance free. [ 22-04064 ]

## **Daily Defense Rich (for mature or dry skin)** 2 oz. (56g)

Luxurious and rich, this heavyweight moisturizer protects and serves up super hydration. [ 22-04048 ]

## **Combination**

*Combination skin represents two opposite ends of the skin care spectrum. The majority of people with combination skin have a T-zone that is oily, and cheeks that are dry. The unique challenge of combination skin is to control oily zones while providing necessary hydration to the dry areas. Adrien Arpel has formulated the solutions that balance skin for a flawless complexion.*

## **Foam Cleanser (for combination skin types)** 8 fl. oz. (236 ml)

Features marine extracts, shea butter, Vitamin E and unique botanical compounds for the gentle removal of makeup and impurities without dryness. Improves the texture of the skin and the overall hydration level of the skin with regular use. Paraben and fragrance free. [ 22-04078 ]

## **Microderm Cleanser with Essence of Orange (for all skin types)** 3.5 oz. (100g)

A 2-in-1-gel cleanser and exfoliator. Gentle but effective formula contains the same crystals used in professional micro-dermabrasion treatments. This moisturizing and nourishing formula contains phospholipids to improve hydration and is enriched with Vitamins A, C and E to help repair and maintain healthy skin. Paraben free and fragrance free. [ 22-04063 ]

## **Lemon Lime Freshener (for all skin types)** 8 fl. oz. (236 ml)

See visibly softer and fresher skin as this alcohol-free blend of lemon and lime extracts, emollients and humectants hydrate the skin while whisking away last remnants of dirt and debris. Brisk and refreshing with the scent of pure lemon and lime. Rosehips and Vitamin C tone purify and brighten the skin while refining pores. Paraben free and fragrance free. [ 22-04074 ]

## **Daily Defense Light (for normal and combination skin types)** 1.7 fl. oz. (50ml)

This light-weight moisturizer protects and serves up super hydration. It calms and soothes skin with the pure, cooling juice of the Aloe Vera plant. A non-PABA sunscreen protects against sun damage. Fragrance free. [ 22-04073 ]

## **Body Treatments**

### **Face & Body Spritz 4 fl. oz. (120 ml)**

An instant cooling and hydrating spritz formulated to bring body and mind into balance. Enjoy the next generation in moisturizing body care with this aroma therapeutic elixir infused with lavender essential oil to relax, balance, nurture and regenerate. This elixir eases the effects of tension and stress caused by our ever increasingly fast-paced life while simultaneously hydrating dry skin. You'll feel calm, cool and collected. Paraben free. [ 22-04058 ]



### **Amber Body Spa 8 oz. (223ml)**

Genuine amber, semi-precious and revered for centuries for its organic beauty is now recognized as a precious resource for the body beautiful. Fortified with natural powerhouses such as Vitamin E, raspberry, linden flower, bilberry and ginkgo biloba extracts, this exquisite gem will buff the skin to jewel-like perfection while protecting against aging free radicals. Paraben free. [ 22-04069 ]

## **4-in-1 Skin Correction Body Treatment Crème (for all skin types)** 8 oz. (223ml)

This Alpha Hydroxy blend provides 4 body treatments in 1. With a single crème, exfoliate, firm, smooth and hydrate. Nourishes and protects and revitalizes aging skin. Rapidly absorbed with a delicious fragrance. Paraben free. [ 22-07810 ]

## **Perfecting Kaleidoscopes**

*Give your perfect skincare routine a big finish with either of these remarkable mineral powder compacts. Created as a kaleidoscope of individual shades, when swept on together, the effect is a multi-faceted luminosity for your skin.*

### **Real Silk Brightening Finish**

A kaleidoscope of soft shades, when applied together, creates a luminous, brightening, wrinkle smoothing effect for the skin. Fragrance free. [ 22-01310 ]

### **Real Silk Bronzing Kaleidoscope**

A kaleidoscope of shades, when applied together give a natural, luminous, sun kissed look for the face. Fragrance free. [ 22-01330 ]

# GALE HAYMAN

B E V E R L Y H I L L S



## Gale's Skincare Musts

### Super Rich Moisture Cream 2 oz.

Ten years in development, this ground breaking formula quenches very dry skin while it restores skin made fragile by aging. Expect some immediately visible results, yet Super Rich Moisture Cream also provides long-lasting restorative and hydrating action for the continued look of fresh new skin. [ 0912144 ]

### Toners

#### Skin Toner Freshener & Firmer 6.8 fl. oz. (200ml)

An exclusive natural moisturizing formula to promote elasticity and suppleness. Alcohol-free, witch hazel free. Recommended for all skin types. [ 10000 ]

### Youth Lift Products

#### Youth Lift Gravity Defying Eye Cream

A light, greaseless eye masque formulated with Dermaxyl, (pronounced Der-max-el) a new complex of peptides and ceramides. Clinically proven to reduce wrinkle depth 36% in 60 days. [ 12135 ]

#### Line-Lift Plus

An improved Line-Lift with a new algae-based skin tightener clinically proven to fill in and plump fine lines and wrinkles while stimulating collagen for longer term benefits. [ 12254 ]

#### Eye Lift Gel 0.5 fl. oz. (15ml)

Uses a gentle blend of natural plant extracts to tailor a more youthful appearance around the fragile eye area. [ 11100 ]

#### Lip Lift 0.09 oz. (2.6g)

Instantly fills in and minimizes noticeable lip lines. Special recipe of Vitamin E and aloe works to soothe and moisturize dry lips. Use as a sports stick. Fragrance free. [ 10600 ]

#### Tinted Lip Lift 0.09 oz. (2.6g)

Add a hint of color with a tinted version of everyone's favorite LIP LIFT. Collagen and Vitamin E hydrate and protect while peptides plump and moisten lips.



**14k Gold**  
[ 21262 ]



**Coco**  
[ 21261 ]

## Targeted Special Care Exfoliating

### Lip Buff

Exfoliate flaky lips in less than a minute! Pulverized walnuts blended with aloe, collagen, Vitamin E and sunscreens smooth, plump and condition for a smooth, sexy mouth. [ 0910650 ]

### Hydrating

#### Daily Radiance Moisturizer 2 fl. oz. (60ml)

Combines the magic of light reflectors with skin conditioners and emollients, including shea butter, aloe and Vitamin E. Skin will look instantly radiant, softer and smoother. [ 12139 ]

### Wrinkle Relief

#### Line Lazer 1 oz. (30g)

Allows user to target specific facial lines with lazer-guided precision using a high percentage of hexapeptide-3, the anti-wrinkle peptide which is clinically proven to decrease wrinkle depth 30% in 30 days. [ 12251 ]

### Eye Care

#### Swiss Formula Eye Cream

A luxurious treatment to pamper delicate skin around eyes. Removes dark circles and puffiness. Non-greasy, lightweight and instantly absorbed into skin. Quenches skin with moisture to maintain a natural balance. Keeps eye makeup in place and avoids creased lids. Leaves your eyes looking fresh, youthful and healthy. [ 11987 ]

### Special Care for the Body

#### Rescue Balm

Uses jojoba, sunflower and shea butter to moisturize and nourish the excessively dry areas of the skin such as elbows, knees and feet while lavender and borage seed oil soothes and heals the skin. [ 12253 ]

#### Revitalizing Spritzer

Feel the chill with this botanical spray that not only cools the body with a beautiful, natural fragrance. It hydrates as well. [ 12252 ]

#### Foot Spa 2 fl. oz. (60ml)

A pedicure in a jar – a quick and easy way to have a pedicure while you sleep. Results can be seen first thing in the morning! Your feet will be ready for any occasion. Feet will feel softer, exfoliated, and fresh. [ 0912265 ]

### Gale's Makeup Picks

#### Youth Lift Treatment Foundation

##### 1 fl. oz. (30ml)

Designed to work with Youth Lift to lift and conceal imperfections. Resists creasing and looks natural for hours.



**Porcelain (Light)**  
[ 23315 ]



**Medium Beige (Tan)**  
[ 23317 ]



**Nude (Medium)**  
[ 0923316 ]

### Medium Translucent Powder

Light as silk, finishes makeup for longer wear. [ 23701 ]

### Cashmere Loose Face Powder

As opulent as cashmere, this loose, translucent powder creates a smooth second skin while it "sets" makeup for a sheer, silky finish that looks and feels beautifully natural. [ 23722 ]

### California Gold Mineral Bronzing Powder 0.18 oz. (5g)



The natural light reflecting properties found in minerals create a soft, diffused and youthful look to the skin. Shea butter and Vitamin E moisturize and protect. Talc free, fragrance free formula. [ 0923651 ]

### Ultimate Volume Mascara (Black)

Flirt, wink, smile with your eyes, this volumizing lash building formula will not flake or smudge. Glamorous, dramatic, breathtaking lashes yet safe for contact lens wearers, and paraben free. [ 0921350 ]

### Single Eye Shadows

Use wet or dry for amazing eye looks. Brilliant for blondes: taupe, gray frost, lilac, soft peach, black/brown (if smudged). Beautiful on brunettes: blue grey, lite rose, grey frost, black/brown (if smudged). Radical for redheads: soft peach, blues, lilac, black/brown (if smudged).

- |  |  |
|--|--|
|  <b>Soft Peach</b><br>[ 0931257 ]  |  <b>Lilac</b><br>[ 0931261 ]      |
|  <b>Black/Brown</b><br>[ 0931260 ] |  <b>Grey Frost</b><br>[ 0931258 ] |
|  <b>Blue Grey</b><br>[ 0931262 ]   |  <b>Lite Rose</b><br>[ 0931256 ]  |
|  <b>Taupe</b><br>[ 0931263 ]       |  |





### Blush

Putting on blush will finish your look, so much so that you may find that you don't have to put on as much make-up as you usually do. Gale Hayman blush is a great quality sheer product that works well for oily and/or dry skin.

- |   |   |   |
|---|---|---|
|  <b>Peach</b><br>[ 0923725 ] |  <b>Soft Rose</b><br>[ 0923726 ] |  <b>Rose Bronze</b><br>[ 0923727 ] |
|---|---|---|













### Lip Shimmers 1 fl. oz. (30ml)

This lip plumping and conditioning formula stimulates collagen leaving lips soft and voluptuous while adding vibrant color and sexy shine.

- |   |   |
|---|---|
|  <b>14k Gold</b><br>[ 0921203 ]  |  <b>Pouty Pearl</b><br>[ 0921200 ] |
|  <b>Plum Pout</b><br>[ 0921202 ] |  <b>Rose Kiss</b><br>[ 0921201 ]   |

### Lipstick

Rich, creamy formula softens lips.

- |  |   |
|--|---|
|  <b>14k Gold w</b><br>[ 21046 ]       |  <b>Pink Champagne c</b><br>[ 21068 ]  |
|  <b>Bronze N</b><br>[ 21074 ]         |  <b>Water Lilly c</b><br>[ 21059 ]     |
|  <b>Hot Rose w</b><br>[ 21073 ]       |  <b>Honey Rose c</b><br>[ 21066 ]      |
|  <b>Hollywood Rose N</b><br>[ 21062 ] |  <b>Pink Splendour c</b><br>[ 21069 ]  |
|  <b>LA Red c</b><br>[ 21070 ]         |  <b>Berry Kiss N</b><br>[ 21067 ]      |
|  <b>Mauve Crystal c</b><br>[ 21061 ]  |  <b>Champagne Peach N</b><br>[ 21072 ] |
|  <b>Sienna c</b><br>[ 21071 ]         |   |

### Creamy Lipcolor



Soft Pink [ 0921250 ]

### Under Makeup Magic

#### Primer for the Eyes & Lips 0.1 fl. oz. (3ml)

Keeps eye shadow and lipstick in place for hours. Helps diminish the appearance of tiny lines and imperfections with unique optical diffusers. [ 23204 ]

#### Velvet Foundation Primer 1 oz. (28g)

This silky formula prepares the face for makeup, refining the skin's texture to produce a flawless finish that lasts all day. Enriched with antioxidants to protect and soothe skin as well as soft focus light reflecting properties to add a luminous quality. [ 23331 ]

#### Youth Glow Enhanced Light Diffusing Gel 1 fl oz (30ml)

The magic of Hollywood has been harnessed in this lightweight gel containing micro-pulverized refractive particles suspended in a lightweight tinted gel. [ 0923335 ]

#### Treatment Concealer

Moisture-rich, line filling, concealer. Fortified with Vitamin E, this unique concealer highlights and brightens your complexion. Captures and reflects light to conceal and sculpt specific areas of the face. Gale Hayman's Treatment Concealer Cream is carefully formulated to suit a wide range of skin tones. [ 23203 ]

#### Mint Treatment Concealer

Mint-toned treatment concealer virtually makes red blemishes or imperfections disappear under makeup. [ 0923206 ]

## START YOUR OWN HOME-BASED BUSINESS TODAY

and Capture Your

# DREAMS

**Join** the glamorous and exciting cosmetic industry  
**Help** others look and feel their best  
**Earn** an extra \$1,000 or more each month part-time  
selling already established and in-demand products  
**Earn** six figures as others join your team and do what you do  
**Earn** exotic trips, beautiful jewelry, and a Mercedes 350

### Success Speaks Best

"These products are the best available anywhere. And color analysis gives my clients a way to see for themselves how their clothing and makeup colors have them looking their best."

**E.Herman**

"The products literally sell themselves. I earn \$2,000 or so most months and I don't carry inventory. My business is hassle-free. I love it."

**B.Kemp**

"I teach my consultants to do what I do. It's a simple system. Earning upwards of \$8,000 a month within a year is doable."

**Y.Lloyd**

Call (800)606-3435

or visit [www.careersinbeauty.com](http://www.careersinbeauty.com)